

PAB972Hu01**Polyclonal Antibody to Pigment Epithelium Derived Factor (PEDF)****Organism Species: Homo sapiens (Human)*****Instruction manual***

FOR IN VITRO USE AND RESEARCH USE ONLY

NOT FOR USE IN CLINICAL DIAGNOSTIC PROCEDURES

9th Edition (Revised in Jul, 2013)

[PRODUCT INFORMATION]**Immunogen:** PEDF, Human**Clonality:** Polyclonal**Host:** Rabbit**Immunoglobulin Type:** IgG**Purification:** Affinity Chromatography.**Applications:** WB, ICC, IHC-P, IHC-F, ELISA**Concentration:** 200µg/mL**UOM:** 100µg**[IMMUNOGEN INFORMATION]****Immunogen:** Recombinant PEDF (Asn21~Pro415) expressed in *E.coli*.**Accession No.:** RPB972Hu01**Sequence:** The target protein is fused with two N-terminal Tags, His-tag and T7-tag and its sequence is listed below.

MGSSHHHHHH SSSLVPRGSH MASMTGGQQM GRGSEF- NPASPPEEGS PDPDSTGALV
EEEDPFFKVP VNKLA AAVSN FGYDLYRVRS STSPTTNVLL SPLSVATALS ALSLGAEQRT
ESIIHRALYY DLISSPDIHG TYKELLDTVT APQKNLKSAS RIVFEKKLRI KSSFVAPLEK
SYGTRPRVLT GNPRDLQEI NNWVQAQMKG KLARSTKEIP DEISILLGLV AHFKGQWVTK
FDSRKTSLED FYLDEERTVR VPMMSDPKAV LRYGLSDSLS CKIAQLPLTG SMSIIFFLPL
KVTQNLTLIE ESLTSEFIHD IDRELKTVQA VLTVPKCLKS YEGEVTKSLQ EMKLQSLFDS
PDFSKITGKP IKLTQVEHRA GFEWNEDGAG TTPSPGLQPA HLTFPDYLHL NQPFIFVLRD
TDTGALLFIG KILD P

[ANTIBODY SPECIFICITY]

The antibody is a rabbit polyclonal antibody raised against PEDF. It has been selected for its ability to recognize PEDF in immunohistochemical staining and western blotting.

[APPLICATIONS]

Western blotting: 1:50-400

Immunocytochemistry in formalin fixed cells: 1:50-500

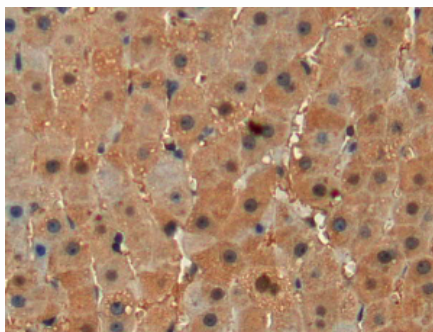
Immunohistochemistry in formalin fixed frozen section: 1:50-500

Immunohistochemistry in paraffin section: 1:10-100

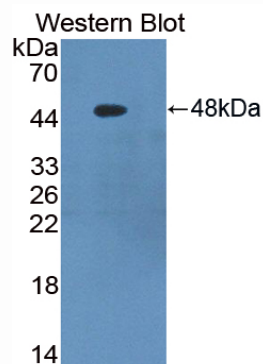
Enzyme-linked Immunosorbent Assay: 1:100-200

Optimal working dilutions must be determined by end user.

[IMAGES]



Used in DAB staining on formalin fixed
paraffin-embedded liver tissue



Used in Western Blot, Sample:
Recombinant PEDF, Human

[CONTENTS]

Form & Buffer: Supplied as solution form in PBS, pH7.4, containing 0.02% NaN_3 , 50% glycerol.

[QUALITY CONTROL]

Content: The quality control contains recombinant PEDF (Asn21~Pro415) disposed in loading buffer.

Usage: 10uL per well when 3,3'-Diaminobenzidine(DAB) as the substrate.
5uL per well when used in enhanced chemiluminescent (ECL).

Note: The quality control is specifically manufactured as the positive control. Not used for other purposes.

Loading Buffer: 100mM Tris(pH8.8), 2% SDS, 200mM NaCl, 50% glycerol, BPB 0.01%, NaN_3 0.02%.

[STORAGE]

Store at 4°C for frequent use. Stored at -20°C to -80°C in a manual defrost freezer for one year without detectable loss of activity. Avoid repeated freeze-thaw cycles.