

PAA382Hu01

Polyclonal Antibody to Protein Kinase B Gamma (PKBg)

Organism Species: *Homo sapiens* (Human)

Instruction manual

FOR RESEARCH USE ONLY

NOT FOR USE IN CLINICAL DIAGNOSTIC PROCEDURES

12th Edition (Revised in Aug, 2016)

[PROPERTIES]

Source: Polyclonal antibody preparation

Host: Rabbit

Purification: Antigen-specific affinity chromatography followed by Protein A affinity chromatography

Traits: Liquid

Concentration: 0.47mg/ml

UOM: 20µl

Cross Reactivity: Mouse; Rat; Pig

Applications: WB; IHC; ICC; IP.

[IMMUNOGEN]

Immunogen: Recombinant PKBg (Asp46~Glu338) expressed in *E.coli*

Accession No.: RPA382Hu01

[APPLICATIONS]

Western blotting: 0.5-2µg/mL;

Immunohistochemistry: 5-20µg/mL;

Immunocytochemistry: 5-20µg/mL;

Optimal working dilutions must be determined by end user.

[FORMULATION]

Form & Buffer: Supplied as solution form in 0.01M PBS, pH7.4, containing 0.05% Proclin-300, 50% glycerol.

[STORAGE AND STABILITY]

Storage: Avoid repeated freeze/thaw cycles.

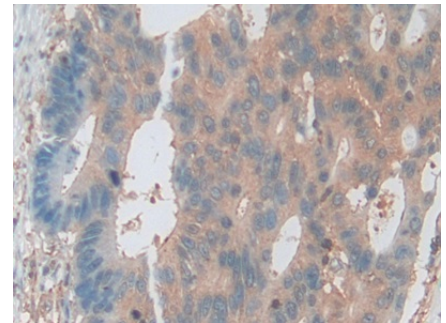
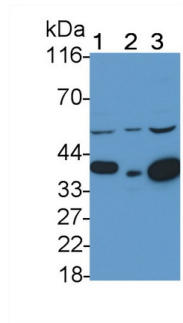
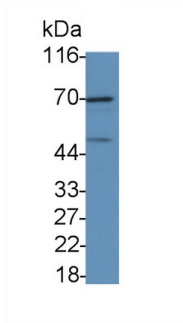
Store at 4°C for frequent use.

Aliquot and store at -20°C for 12 months.

Stability Test: The thermal stability is described by the loss rate. The loss rate was determined by accelerated thermal degradation test, that is, incubate the protein at 37°C for 48h, and no

obvious degradation and precipitation were observed. The loss rate is less than 5% within the expiration date under appropriate storage condition.

[IDENTIFICATION]



Western Blot; Sample: MCF7 cell lysate
 Primary Ab: 1?g/ml Rabbit Anti-Human Cerebrum lysate; Lane2: Rat Cerebrum
 PKBg Antibody Second Ab: 0.2µg/mL lysate; Lane3: Mouse Cerebrum lysate
 HRP-Linked Caprine Anti-Rabbit IgG Primary Ab: 0.5µg/ml Rabbit Anti-
 Polyclonal Antibody (Catalog: Human PKBg Antibody
 SAA544Rb19) Second Ab: 0.2µg/mL HRP-Linked
 Caprine Anti-Rabbit IgG Polyclonal
 Antibody(Catalog: SAA544Rb19)

DAB staining on IHC-P;
 Samples: Human Colorectal cancer
 Tissue;
 Primary Ab: 10µg/ml Rabbit Anti-
 Human PKBg Antibody
 Second Ab: 2µg/mL HRP-Linked
 Caprine Anti-Rabbit IgG Polyclonal
 Antibody
 (Catalog: SAA544Rb19)

[IMPORTANT NOTE]

The kit is designed for research use only, we will not be responsible for any issue if the kit was used in clinical diagnostic or any other procedures.