

**PAM134Hu01**

**Polyclonal Antibody to RNA Exonuclease 2 Homolog (REXO2)**

**Organism Species: *Homo sapiens (Human)***

***Instruction manual***

FOR RESEARCH USE ONLY

NOT FOR USE IN CLINICAL DIAGNOSTIC PROCEDURES

---

13th Edition (Revised in Aug, 2023)

### **[ PROPERTIES ]**

**Source:** Polyclonal antibody preparation

**Host:** Rabbit

**Purification:** Antigen-specific affinity chromatography followed by Protein A affinity chromatography

**Traits:** Liquid

**Concentration:** 0.5mg/mL

**UOM:** 100µL

**Cross Reactivity:** N/A

**Applications:** WB; IHC

### **[ IMMUNOGEN ]**

**Immunogen:** Recombinant REXO2 (Gln41~Asn213) expressed in *E.coli*

**Accession No.:** RPM134Hu01

### **[ APPLICATIONS ]**

Western blotting: 0.01-2µg/mL

Immunohistochemistry: 5-20µg/mL

Immunocytochemistry: 5-20µg/mL

Optimal working dilutions must be determined by end user.

### **[ FORMULATION ]**

**Form & Buffer:** Supplied as solution form in 0.01M PBS, pH7.4, containing 0.05% Proclin-300, 50% glycerol.

### **[ STORAGE AND STABILITY ]**

**Storage:** Avoid repeated freeze/thaw cycles.

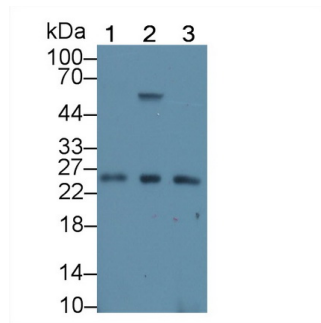
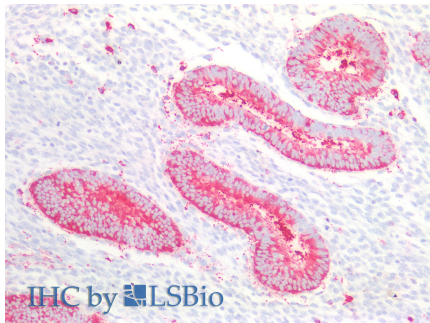
Store at 4°C for frequent use.

Aliquot and store at -20°C for 24 months.

**Stability Test:** The thermal stability is described by the loss rate. The loss rate was determined by accelerated thermal degradation test, that is, incubate the protein at 37°C for 48h, and no

obvious degradation and precipitation were observed. The loss rate is less than 5% within the expiration date under appropriate storage condition.

### [ IDENTIFICATION ]



Vector Red staining on IHC-P;	Western Blot; Sample: Lane1: Human
Samples: Human Uterus Tissue;	Lung lysate; Lane2: 293T cell lysate;
Primary Ab: 10µg/ml Rabbit Anti-	Lane3: Hela cell lysate
Human REXO2 Antibody Second Ab:	Primary Ab: 1µg/ml Rabbit Anti-Human
2µg/mL HRP-Linked Caprine Anti-	REXO2 Antibody
Rabbit IgG Polyclonal Antibody	Second Ab: 0.2µg/mL HRP-Linked
	Caprine Anti-Rabbit IgG Polyclonal
	Antibody
	(Catalog: SAA544Rb19)

### [ IMPORTANT NOTE ]

The kit is designed for research use only, we will not be responsible for any issue if the kit was used in clinical diagnostic or any other procedures.