

PAA645Mu01

Polyclonal Antibody to Receptor For Advanced Glycation Endproducts (RAGE)

Organism Species: *Mus musculus* (Mouse)

Instruction manual

FOR RESEARCH USE ONLY

NOT FOR USE IN CLINICAL DIAGNOSTIC PROCEDURES

13th Edition (Revised in Aug, 2023)

[PROPERTIES]

Source: Polyclonal antibody preparation

Host: Rabbit

Purification: Antigen-specific affinity chromatography followed by Protein A affinity chromatography

Traits: Liquid

Concentration: 0.34mg/mL

UOM: 100µg(294µL)

Cross Reactivity: Human;Rat;Canine;Equine;Porcine;Equine

Applications: WB; IHC; ICC; IP.

[IMMUNOGEN]

Immunogen: Recombinant RAGE (Trp10~Arg188) expressed in *E.coli*

Accession No.: RPA645Mu01

[APPLICATIONS]

Western blotting: 0.01-2µg/mL;

Immunohistochemistry: 5-20µg/mL;

Immunocytochemistry: 5-20µg/mL;

Optimal working dilutions must be determined by end user.

[FORMULATION]

Form & Buffer: Supplied as solution form in PBS, pH7.4, containing 0.02% NaN₃, 50% glycerol.

[STORAGE AND STABILITY]

Storage: Avoid repeated freeze/thaw cycles.

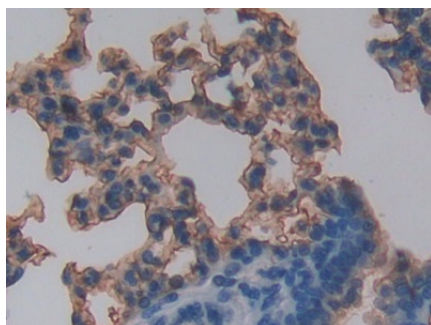
Store at 4°C for frequent use.

Aliquot and store at -20°C for 24 months.

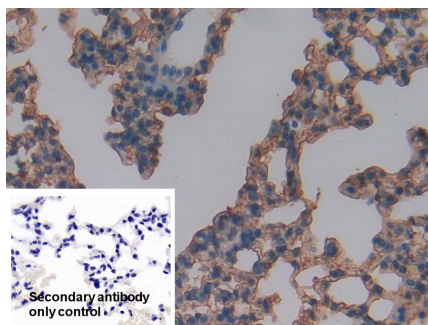
Stability Test: The thermal stability is described by the loss rate. The loss rate was determined by accelerated thermal degradation test, that is, incubate the protein at 37°C for 48h, and no

obvious degradation and precipitation were observed. The loss rate is less than 5% within the expiration date under appropriate storage condition.

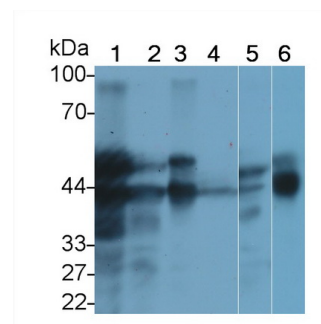
[IDENTIFICATION]



DAB staining on IHC-P; Samples:
Mouse Lung Tissue; Primary Ab:
10µg/ml Rabbit Anti-Mouse AGER
Antibody Second Ab: 2µg/mL HRP-
Linked Caprine Anti-Rabbit IgG
Polyclonal Antibody (Catalog:
SAA544Rb19)



DAB staining on IHC-P;
Sample: Mouse Lung Tissue
Primary Ab: 10µg/ml Rabbit Anti-Mouse
RAGE Antibody
Control: Used PBS instead of primary
antibody
Second Ab: 2µg/ml HRP-Linked
Caprine Anti-Rabbit IgG Polyclonal
Antibody
(Catalog: SAA544Rb19)



Western Blot; Sample: Lane1: Mouse
Lung lysate; Lane2: Rat Lung lysate;
Lane3: Porcine Lung lysate; Lane4:
Human Lung lysate; Lane5: Canine
Lung lysate; Lane6: Equine Lung lysate
Primary Ab: 2µg/ml Rabbit Anti-Mouse
AGER Antibody
Second Ab: 0.2µg/mL HRP-Linked
Caprine Anti-Rabbit IgG Polyclonal
Antibody
(Catalog: SAA544Rb19)

[IMPORTANT NOTE]

The kit is designed for research use only, we will not be responsible for any issue if the kit was used in clinical diagnostic or any other procedures.