

PAC775Mu01

Polyclonal Antibody to Reelin (RL)

Organism Species: *Mus musculus* (Mouse)

Instruction manual

FOR RESEARCH USE ONLY

NOT FOR USE IN CLINICAL DIAGNOSTIC PROCEDURES

12th Edition (Revised in Aug, 2016)

[PROPERTIES]

Source: Polyclonal antibody preparation

Host: Rabbit

Purification: Antigen-specific affinity chromatography followed by Protein A affinity chromatography

Traits: Liquid

Concentration: 1mg/ml

UOM: 100ug(100μl)

Applications: WB; IHC; ICC; IP.

[IMMUNOGEN]

Immunogen: Recombinant Reelin (Glu3143~Pro3461 (Accession # Q60841)) expressed in *E.coli*

Accession No.: RPC775Mu01

[APPLICATIONS]

Western blotting: 0.5-5μg/mL;1:200-2000

Immunohistochemistry: 5-20μg/mL;1:50-200

Immunocytochemistry: 5-20μg/mL;1:50-200

Optimal working dilutions must be determined by end user.

[FORMULATION]

Form & Buffer: Supplied as solution form in PBS, pH7.4, containing 0.02% NaN₃, 50% glycerol.

[STORAGE AND STABILITY]

Storage: Avoid repeated freeze/thaw cycles.

Store at 4°C for frequent use.

Aliquot and store at -20°C for 12 months.

Stability Test: The thermal stability is described by the loss rate. The loss rate was determined by accelerated thermal degradation test, that is, incubate the protein at 37°C for 48h, and no

obvious degradation and precipitation were observed. The loss rate is less than 5% within the expiration date under appropriate storage condition.

[IDENTIFICATION]

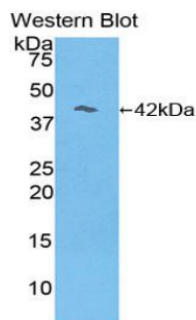
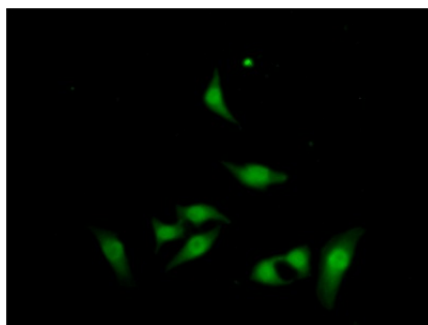
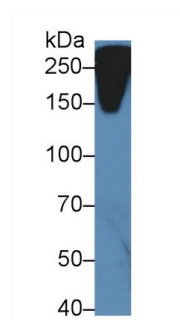


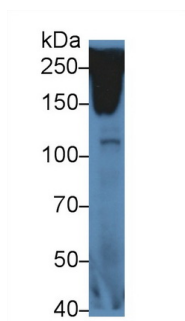
Figure. Western Blot; Sample: Recombinant RL, Mouse.



FITC staining on IF; Samples: Human HepG2 Cells; Primary Ab: 10µg/ml Rabbit Anti-Mouse RL Antibody



Western Blot; Sample: Mouse Serum; Primary Ab: 5µg/ml Rabbit Anti-Mouse RL Antibody
Second Ab: 0.2µg/mL HRP-Linked Caprine Anti-Rabbit IgG Polyclonal Antibody
(Catalog: SAA544Rb19)

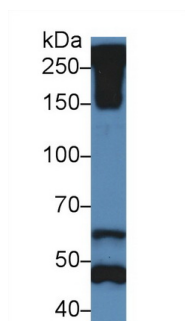


Western Blot; Sample: Human HepG2 cell lysate;

Primary Ab: 5µg/ml Rabbit Anti-Mouse RL Antibody

Second Ab: 0.2µg/mL HRP-Linked Caprine Anti-Rabbit IgG Polyclonal Antibody

(Catalog: SAA544Rb19)

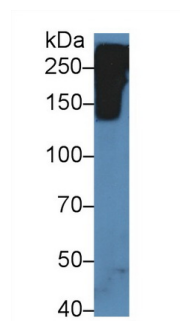


Western Blot; Sample: Mouse Cerebrum lysate;

Primary Ab: 5µg/ml Rabbit Anti-Mouse RL Antibody

Second Ab: 0.2µg/mL HRP-Linked Caprine Anti-Rabbit IgG Polyclonal Antibody

(Catalog: SAA544Rb19)



Western Blot; Sample: Mouse Fetal rat lysate;

Primary Ab: 5µg/ml Rabbit Anti-Mouse RL Antibody

Second Ab: 0.2µg/mL HRP-Linked Caprine Anti-Rabbit IgG Polyclonal Antibody

(Catalog: SAA544Rb19)

[IMPORTANT NOTE]



The kit is designed for research use only, we will not be responsible for any issue if the kit was used in clinical diagnostic or any other procedures.