

PAA929Bo01

Polyclonal Antibody to Retinol Binding Protein 4 (RBP4)

Organism Species: *Bos taurus*; Bovine (Cattle)

Instruction manual

FOR RESEARCH USE ONLY

NOT FOR USE IN CLINICAL DIAGNOSTIC PROCEDURES

13th Edition (Revised in Aug, 2023)

[PROPERTIES]

Source: Polyclonal antibody preparation

Host: Rabbit

Purification: Antigen-specific affinity chromatography followed by Protein A affinity chromatography

Traits: Liquid

Concentration: 0.5mg/mL

UOM: 100µL

Cross Reactivity: Human;Mouse;Porcine;Caprine

Applications: WB; IHC

[IMMUNOGEN]

Immunogen: Recombinant RBP4 (Glu1~Leu183) expressed in *E.coli*

Accession No.: RPA929Bo01

[APPLICATIONS]

Western blotting: 0.01-2µg/mL

Immunohistochemistry: 5-20µg/mL

Immunocytochemistry: 5-20µg/mL

Optimal working dilutions must be determined by end user.

[FORMULATION]

Form & Buffer: Supplied as solution form in 0.01M PBS, pH7.4, containing 0.05% Proclin-300, 50% glycerol.

[STORAGE AND STABILITY]

Storage: Avoid repeated freeze/thaw cycles.

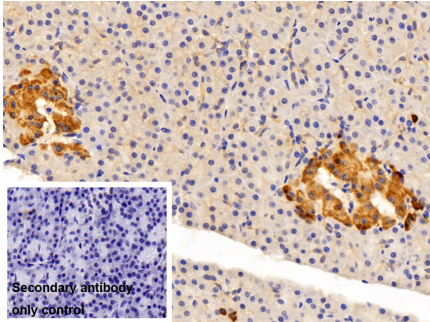
Store at 4°C for frequent use.

Aliquot and store at -20°C for 24 months.

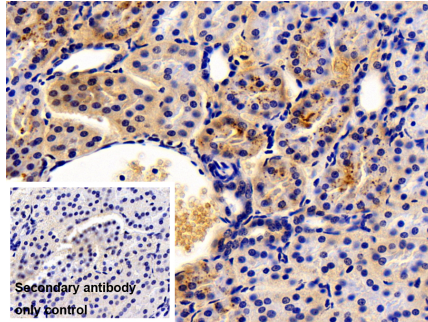
Stability Test: The thermal stability is described by the loss rate. The loss rate was determined by accelerated thermal degradation test, that is, incubate the protein at 37°C for 48h, and no

obvious degradation and precipitation were observed. The loss rate is less than 5% within the expiration date under appropriate storage condition.

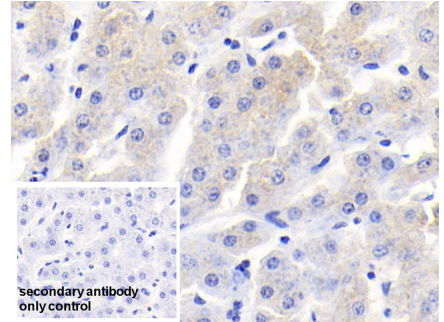
[IDENTIFICATION]



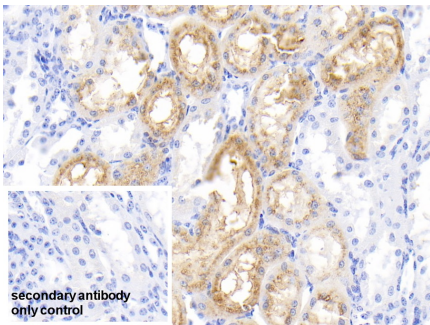
DAB staining on IHC-P; Sample: Porcine Pancreas Tissue
 Primary Ab: 10µg/ml Rabbit Anti-Bovine RBP4
 Antibody Control: Used PBS instead of primary antibody
 Second Ab: 2µg/ml HRP-Linked Caprine Anti-Rabbit IgG Polyclonal Antibody (Catalog: SAA544Rb19)



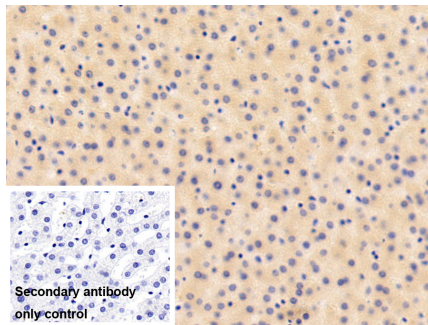
DAB staining on IHC-P; Sample: Porcine Kidney Tissue
 Primary Ab: 10µg/ml Rabbit Anti-Bovine RBP4 Antibody
 Control: Used PBS instead of primary antibody
 Second Ab: 2µg/ml HRP-Linked Caprine Anti-Rabbit IgG Polyclonal Antibody (Catalog: SAA544Rb19)



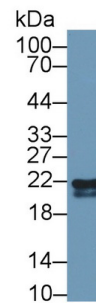
DAB staining on IHC-P; Sample: Bovine Liver Tissue
 Primary Ab: 20µg/ml Rabbit Anti-Bovine RBP4 Antibody
 Control: Used PBS instead of primary antibody
 Second Ab: 2µg/ml HRP-Linked Caprine Anti-Rabbit IgG Polyclonal Antibody (Catalog: SAA544Rb19)



DAB staining on IHC-P; Sample: Bovine Kidney Tissue
 Primary Ab: 20µg/ml Rabbit Anti-Bovine RBP4 Antibody
 Control: Used PBS instead of primary antibody
 Second Ab: 2µg/ml HRP-Linked



DAB staining on IHC-P; Sample: Porcine Liver Tissue
 Primary Ab: 10µg/ml Rabbit Anti-Bovine RBP4 Antibody
 Control: Used PBS instead of primary antibody
 Second Ab: 2µg/ml HRP-Linked

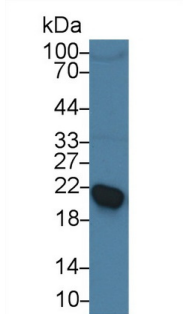


Western Blot; Sample: Bovine Kidney lysate;
 Primary Ab: 1µg/ml Rabbit Anti-Bovine RBP4 Antibody
 Second Ab: 0.2µg/ml HRP-Linked Caprine Anti-Rabbit IgG Polyclonal Antibody

Caprine Anti-Rabbit IgG Polyclonal

Antibody

(Catalog: SAA544Rb19)



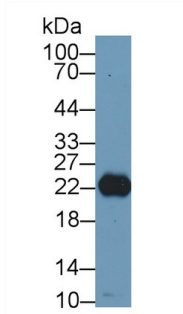
Western Blot; Sample: Bovine Serum;
Primary Ab: 1µg/ml Rabbit Anti-Bovine

RBP4 Antibody

Second Ab: 0.2µg/mL HRP-Linked

Caprine Anti-Rabbit IgG Polyclonal
Antibody

(Catalog: SAA544Rb19)



Western Blot; Sample: Porcine Liver
lysate;

Primary Ab: 1µg/ml Rabbit Anti-Bovine
RBP4 Antibody

Second Ab: 0.2µg/mL HRP-Linked
Caprine Anti-Rabbit IgG Polyclonal

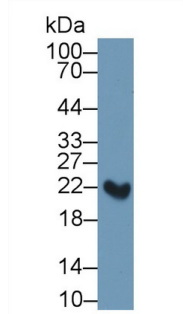
Antibody

(Catalog: SAA544Rb19)

Caprine Anti-Rabbit IgG Polyclonal

Antibody

(Catalog: SAA544Rb19)



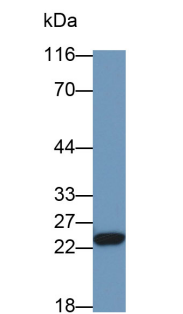
Western Blot; Sample: Bovine Liver
lysate;

Primary Ab: 1µg/ml Rabbit Anti-Bovine
RBP4 Antibody

Second Ab: 0.2µg/mL HRP-Linked
Caprine Anti-Rabbit IgG Polyclonal

Antibody

(Catalog: SAA544Rb19)



Western Blot; Sample: Mouse Serum

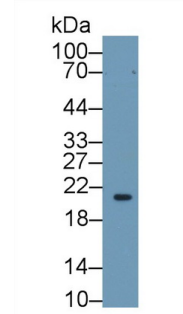
Primary Ab: 1µg/ml Rabbit Anti-Bovine
RBP4 Antibody

Second Ab: 0.2µg/mL HRP-Linked
Caprine Anti-Rabbit IgG Polyclonal

Antibody

(Catalog: SAA544Rb19)

(Catalog: SAA544Rb19)



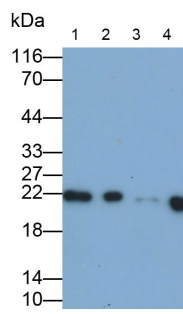
Western Blot; Sample: Human HepG2
cell lysate;

Primary Ab: 1µg/ml Rabbit Anti-Bovine
RBP4 Antibody

Second Ab: 0.2µg/mL HRP-Linked
Caprine Anti-Rabbit IgG Polyclonal

Antibody

(Catalog: SAA544Rb19)



Western Blot; Samples: Lane1: Bovine
Liver lysate; Lane2: Bovine Serum;

Lane3: Bovine Kidney lysate; Lane4:
Porcine Serum;

Primary Ab: 0.1µg/ml Rabbit Anti-
Bovine RBP4 Antibody

Second Ab: 0.2µg/ml HRP-Linked
Caprine Anti-Rabbit IgG Polyclonal

Antibody

(Catalog: SAA544Rb19)

[IMPORTANT NOTE]

The kit is designed for research use only, we will not be responsible for any issue if the kit was used in clinical diagnostic or any other procedures.