

**PAB080Bo01**

**Polyclonal Antibody to S100 Calcium Binding Protein A12 (S100A12)**

**Organism Species: *Bos taurus*; Bovine (Cattle)**

***Instruction manual***

FOR RESEARCH USE ONLY

NOT FOR USE IN CLINICAL DIAGNOSTIC PROCEDURES

---

13th Edition (Revised in Aug, 2023)

## **[ PROPERTIES ]**

**Source:** Polyclonal antibody preparation

**Host:** Rabbit

**Purification:** Antigen-specific affinity chromatography followed by Protein A affinity chromatography

**Traits:** Liquid

**Concentration:** 0.5mg/mL

**UOM:** 100µL

**Cross Reactivity:** Human;Mouse;Rat;Porcine

**Applications:** WB; IHC; ICC; IP.

## **[ IMMUNOGEN ]**

**Immunogen:** Recombinant S100A12 (Thr2~Glu92) expressed in *E.coli*

**Accession No.:** RPB080Bo01

## **[ APPLICATIONS ]**

Western blotting: 0.01-2µg/mL;

Immunohistochemistry: 5-20µg/mL;

Immunocytochemistry: 5-20µg/mL;

Optimal working dilutions must be determined by end user.

## **[ FORMULATION ]**

**Form & Buffer:** Supplied as solution form in 0.01M PBS, pH7.4, containing 0.05% Proclin-300, 50% glycerol.

## **[ STORAGE AND STABILITY ]**

**Storage:** Avoid repeated freeze/thaw cycles.

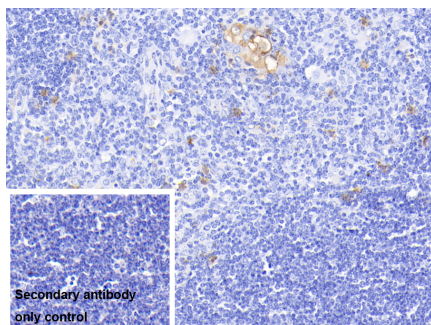
Store at 4°C for frequent use.

Aliquot and store at -20°C for 24 months.

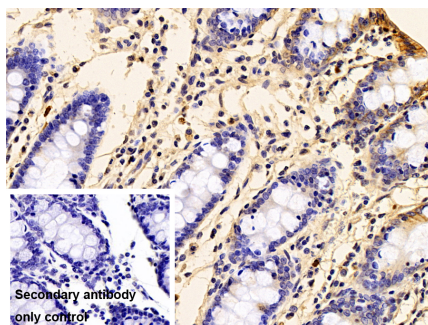
**Stability Test:** The thermal stability is described by the loss rate. The loss rate was determined by accelerated thermal degradation test, that is, incubate the protein at 37°C for 48h, and no

obvious degradation and precipitation were observed. The loss rate is less than 5% within the expiration date under appropriate storage condition.

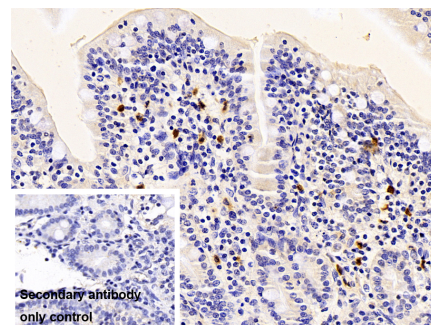
## [ IDENTIFICATION ]



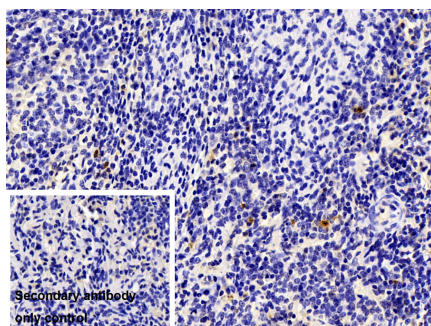
DAB staining on IHC-P; Samples:  
Bovine Thymus Tissue; Primary Ab:  
20 $\mu$ g/ml Rabbit Anti-Bovine S100A12  
Antibody Second Ab: 2 $\mu$ g/mL HRP-  
Linked Caprine Anti-Rabbit IgG  
Polyclonal Antibody (Catalog:  
SAA544Rb19)



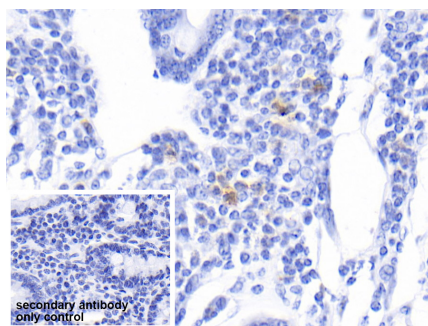
DAB staining on IHC-P;  
Sample: Porcine Colon Tissue  
Primary Ab: 10 $\mu$ g/ml Rabbit Anti-Bovine  
S100A12 Antibody  
Control: Used PBS instead of primary  
antibody  
Second Ab: 2 $\mu$ g/ml HRP-Linked  
Caprine Anti-Rabbit IgG Polyclonal  
Antibody  
(Catalog: SAA544Rb19)



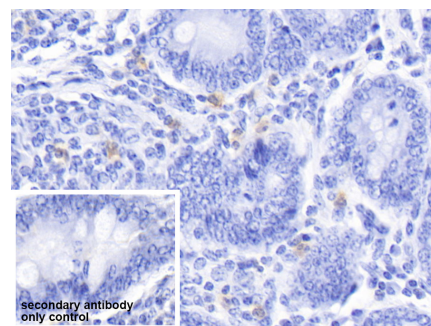
DAB staining on IHC-P;  
Sample: Porcine Small intestine Tissue  
Primary Ab: 10 $\mu$ g/ml Rabbit Anti-Bovine  
S100A12 Antibody  
Control: Used PBS instead of primary  
antibody  
Second Ab: 2 $\mu$ g/ml HRP-Linked  
Caprine Anti-Rabbit IgG Polyclonal  
Antibody  
(Catalog: SAA544Rb19)



DAB staining on IHC-P;  
Sample: Porcine Spleen Tissue  
Primary Ab: 10 $\mu$ g/ml Rabbit Anti-Bovine  
S100A12 Antibody  
Control: Used PBS instead of primary  
antibody  
Second Ab: 2 $\mu$ g/ml HRP-Linked



DAB staining on IHC-P;  
Sample: Bovine Colon Tissue  
Primary Ab: 20 $\mu$ g/ml Rabbit Anti-Bovine  
S100A12 Antibody  
Control: Used PBS instead of primary  
antibody  
Second Ab: 2 $\mu$ g/ml HRP-Linked

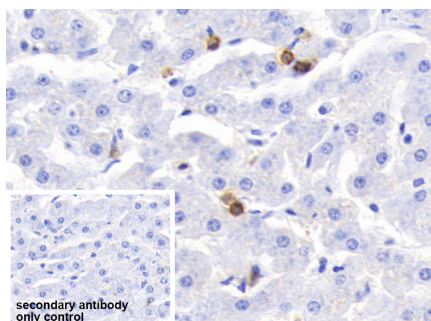


DAB staining on IHC-P;  
Sample: Bovine Small intestine Tissue  
Primary Ab: 20 $\mu$ g/ml Rabbit Anti-Bovine  
S100A12 Antibody  
Control: Used PBS instead of primary  
antibody  
Second Ab: 2 $\mu$ g/ml HRP-Linked

Caprine Anti-Rabbit IgG Polyclonal

Antibody

(Catalog: SAA544Rb19)



DAB staining on IHC-P;

Sample: Bovine Liver Tissue

Primary Ab: 20µg/ml Rabbit Anti-Bovine

S100A12 Antibody

Control: Used PBS instead of primary  
antibody

Second Ab: 2µg/ml HRP-Linked

Caprine Anti-Rabbit IgG Polyclonal

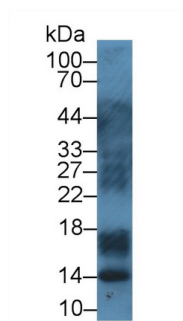
Antibody

(Catalog: SAA544Rb19)

Caprine Anti-Rabbit IgG Polyclonal

Antibody

(Catalog: SAA544Rb19)



Western Blot; Sample: Porcine Lymph

node lysate;

Primary Ab: 1µg/ml Rabbit Anti-Bovine

S100A12 Antibody

Second Ab: 0.2µg/mL HRP-Linked  
Caprine Anti-Rabbit IgG Polyclonal

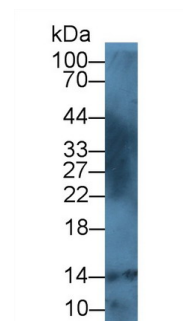
Antibody

(Catalog: SAA544Rb19)

Caprine Anti-Rabbit IgG Polyclonal

Antibody

(Catalog: SAA544Rb19)



Western Blot; Sample: Human

Leukocyte lysate;

Primary Ab: 1µg/ml Rabbit Anti-Bovine

S100A12 Antibody

Second Ab: 0.2µg/mL HRP-Linked  
Caprine Anti-Rabbit IgG Polyclonal

Antibody

(Catalog: SAA544Rb19)

## [ **IMPORTANT NOTE** ]

The kit is designed for research use only, we will not be responsible for any issue if the kit was used in clinical diagnostic or any other procedures.