

**PAL926Hu03**

**Polyclonal Antibody to Semaphorin 5B (SEMA5B)**

**Organism Species: *Homo sapiens (Human)***

***Instruction manual***

**FOR RESEARCH USE ONLY**

**NOT FOR USE IN CLINICAL DIAGNOSTIC PROCEDURES**

---

13th Edition (Revised in Aug, 2023)

## **[ PROPERTIES ]**

**Source:** Polyclonal antibody preparation

**Host:** Rabbit

**Purification:** Antigen-specific affinity chromatography followed by Protein A affinity chromatography

**Traits:** Liquid

**Concentration:** 0.5mg/mL

**UOM:** 100µL

**Cross Reactivity:** Mouse;Rat;Porcine.

**Applications:** WB; IHC

## **[ IMMUNOGEN ]**

**Immunogen:** Recombinant SEMA5B (Leu36~Pro602) expressed in *E.coli*

**Accession No.:** RPL926Hu03

## **[ APPLICATIONS ]**

Western blotting: 0.01-2µg/mL;

Immunohistochemistry: 5-20µg/mL;

Optimal working dilutions must be determined by end user.

## **[ FORMULATION ]**

**Form & Buffer:** Supplied as solution form in 0.01M PBS, pH7.4, containing 0.05% Proclin-300, 50% glycerol.

## **[ STORAGE AND STABILITY ]**

**Storage:** Avoid repeated freeze/thaw cycles.

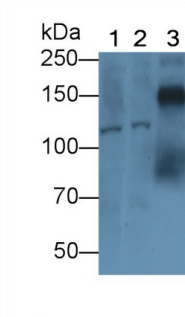
Store at 4°C for frequent use.

Aliquot and store at -20°C for 24 months.

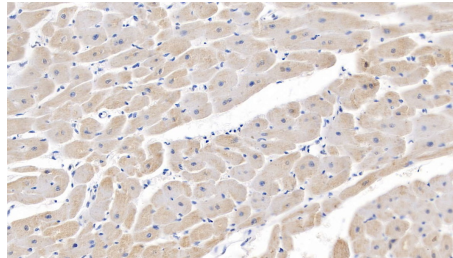
**Stability Test:** The thermal stability is described by the loss rate. The loss rate was determined by accelerated thermal degradation test, that is, incubate the protein at 37°C for 48h, and no obvious degradation and precipitation were observed. The loss rate is less than 5% within the

expiration date under appropriate storage condition.

## [ IDENTIFICATION ]

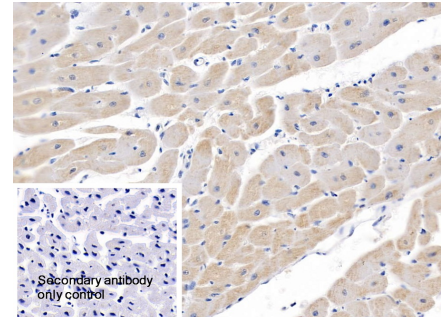


Western Blot; Sample: Lane1: Mouse Cerebrum lysate; Lane2: Rat Cerebrum lysate; Lane3: Human Serum Primary  
Ab: 2µg/ml Rabbit Anti-Human SEMA5B Antibody Second Ab: 0.2µg/mL HRP-Linked Caprine Anti-Rabbit IgG Polyclonal Antibody (Catalog: SAA544Rb19)

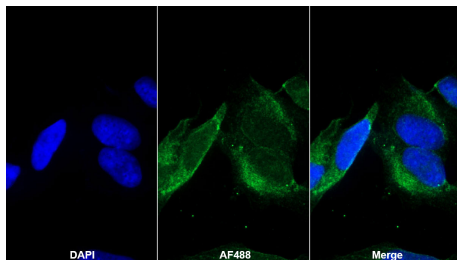


DAB staining on IHC-P; Samples:

Human Cardiac Muscle Tissue; Primary Ab: 20µg/ml Rabbit Anti-Human SEMA5B Antibody Second Ab: 2µg/mL HRP-Linked Caprine Anti-Rabbit IgG Polyclonal Antibody (Catalog: SAA544Rb19)



DAB staining on IHC-P; Sample: Human Cardiac Muscle Tissue  
Primary Ab: 20µg/ml Rabbit Anti-Human SEMA5B Antibody  
Control: Used PBS instead of primary antibody  
Second Ab: 2µg/ml HRP-Linked Caprine Anti-Rabbit IgG Polyclonal Antibody (Catalog: SAA544Rb19)



AF488 staining on IF;

Sample: SH-SY5Y cell  
Primary Ab: 20µg/ml Rabbit Anti-Human SEMA5B Antibody  
Second Ab: 2µg/ml AF488-Linked Caprine Anti-Rabbit IgG Polyclonal Antibody (Catalog: SAA544Rb11)

**[ IMPORTANT NOTE ]**

The kit is designed for research use only, we will not be responsible for any issue if the kit was used in clinical diagnostic or any other procedures.