

**PAB960Rb51**

**Polyclonal Antibody to Superoxide Dismutase 1 (SOD1)**

**Organism Species: *Oryctolagus cuniculus* (Rabbit)**

***Instruction manual***

FOR RESEARCH USE ONLY

NOT FOR USE IN CLINICAL DIAGNOSTIC PROCEDURES

---

13th Edition (Revised in Aug, 2023)

**[ PROPERTIES ]**

**Source:** Polyclonal antibody preparation

**Host:** Guinea pig

**Purification:** Antigen-specific affinity chromatography followed by Protein A affinity chromatography

**Traits:** Liquid

**Concentration:** 500µg/mL

**UOM:** 1

**Cross Reactivity:** N/A

**Applications:** WB,IHC

**[ IMMUNOGEN ]**

**Immunogen:** Recombinant SOD1 (Ala2~Pro153 (Accession # P09212)) expressed in *E.coli*

**Accession No.:** RPB960Rb01

**[ APPLICATIONS ]**

Western blotting: 0.01-2µg/mL;

Immunohistochemistry: 5-20µg/mL;

Immunocytochemistry: 5-20µg/mL;

Optimal working dilutions must be determined by end user.

**[ FORMULATION ]**

**Form & Buffer:** Supplied as solution form in 0.01M PBS, pH7.4, containing 0.05% Proclin-300, 50% glycerol.

**[ STORAGE AND STABILITY ]**

**Storage:** Avoid repeated freeze/thaw cycles.

Store at 4°C for frequent use.

Aliquot and store at -20°C for 24 months.

**Stability Test:** The thermal stability is described by the loss rate. The loss rate was determined by accelerated thermal degradation test, that is, incubate the protein at 37°C for 48h, and no

obvious degradation and precipitation were observed. The loss rate is less than 5% within the expiration date under appropriate storage condition.

**[ IDENTIFICATION ]**

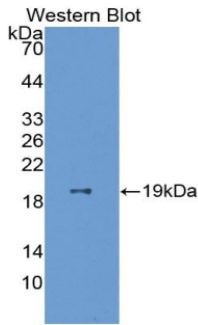
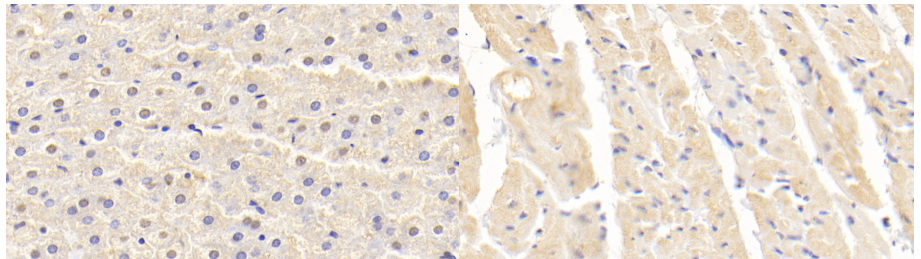
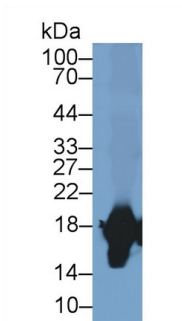


Figure. Western Blot; Sample: Recombinant SOD1, Rabbit.



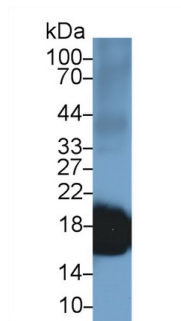
DAB staining on IHC-P; Samples: Rabbit Liver Tissue; Primary Ab: 20?g/ml Cavia Anti-Rabbit SOD1 Antibody Second Ab: 2µg/mL HRP-Linked Rabbit Anti-Cavia IgG Polyclonal Antibody (Catalog: SAA544Gu09)

DAB staining on IHC-P; Samples: Rabbit Cardiac Muscle Tissue; Primary Ab: 20?g/ml Cavia Anti-Rabbit SOD1 Antibody Second Ab: 2µg/mL HRP-Linked Rabbit Anti-Cavia IgG Polyclonal Antibody (Catalog: SAA544Gu09)



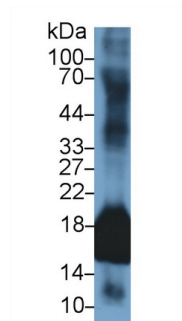
Western Blot; Sample: Rabbit Liver lysate;

Primary Ab: 1µg/ml Cavia Anti-Rabbit SOD1 Antibody  
Second Ab: 0.2µg/mL HRP-Linked Rabbit Anti-Cavia IgG Polyclonal Antibody (Catalog: SAA544Gu09)



Western Blot; Sample: Rabbit Lung lysate;

Primary Ab: 1µg/ml Cavia Anti-Rabbit SOD1 Antibody  
Second Ab: 0.2µg/mL HRP-Linked Rabbit Anti-Cavia IgG Polyclonal Antibody (Catalog: SAA544Gu09)



Western Blot; Sample: Rabbit Uterus lysate;

Primary Ab: 1µg/ml Cavia Anti-Rabbit SOD1 Antibody  
Second Ab: 0.2µg/mL HRP-Linked Rabbit Anti-Cavia IgG Polyclonal Antibody (Catalog: SAA544Gu09)

**[ IMPORTANT NOTE ]**

The kit is designed for research use only, we will not be responsible for any issue if the kit was used in clinical diagnostic or any other procedures.