

**PAA753Ra01**

**Polyclonal Antibody to Toll Like Receptor 4 (TLR4)**

**Organism Species: *Rattus norvegicus* (Rat)**

***Instruction manual***

FOR RESEARCH USE ONLY

NOT FOR USE IN CLINICAL DIAGNOSTIC PROCEDURES

---

13th Edition (Revised in Aug, 2023)

## **[ PROPERTIES ]**

**Source:** Polyclonal antibody preparation

**Host:** Rabbit

**Purification:** Antigen-specific affinity chromatography followed by Protein A affinity chromatography

**Traits:** Liquid

**Concentration:** 0.49mg/mL

**UOM:** 10µL

**Cross Reactivity:** Human;Mouse

**Applications:** WB; IHC

## **[ IMMUNOGEN ]**

**Immunogen:** Recombinant TLR4 (His49~Gln247) expressed in *E.coli*

**Accession No.:** RPA753Ra01

## **[ APPLICATIONS ]**

Western blotting: 0.01-2µg/mL;

Immunohistochemistry: 5-20µg/mL;

Optimal working dilutions must be determined by end user.

## **[ FORMULATION ]**

**Form & Buffer:** Supplied as solution form in 0.01M PBS, pH7.4, containing 0.05% Proclin-300, 50% glycerol.

## **[ STORAGE AND STABILITY ]**

**Storage:** Avoid repeated freeze/thaw cycles.

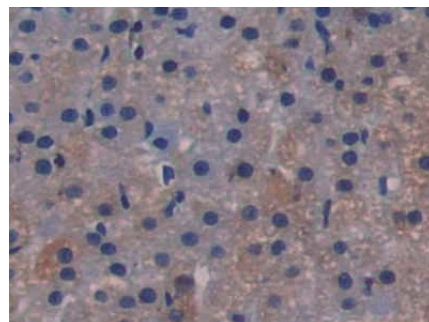
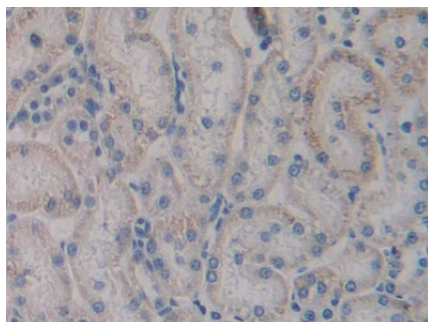
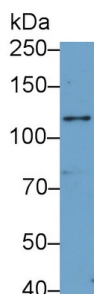
Store at 4°C for frequent use.

Aliquot and store at -20°C for 24 months.

**Stability Test:** The thermal stability is described by the loss rate. The loss rate was determined by accelerated thermal degradation test, that is, incubate the protein at 37°C for 48h, and no obvious degradation and precipitation were observed. The loss rate is less than 5% within the

expiration date under appropriate storage condition.

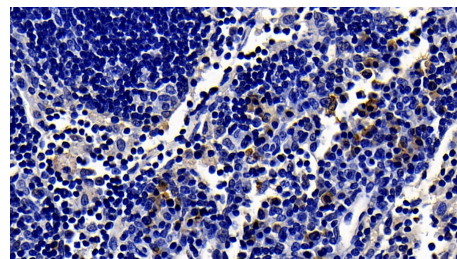
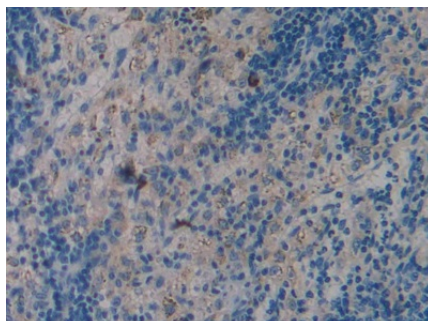
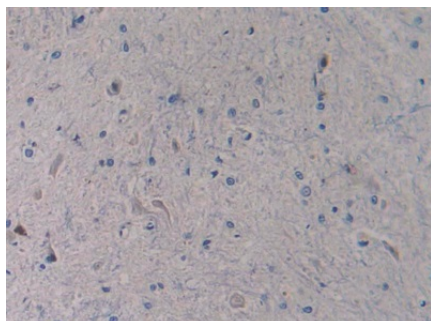
**[ IDENTIFICATION ]**



Western Blot; Sample: Hela cell lysate  
Primary Ab: 0.8µg/ml Rabbit Anti-Rat  
TLR4 Antibody Second Ab: 0.2µg/mL  
HRP-Linked Caprine Anti-Rabbit IgG  
Polyclonal Antibody (Catalog:  
SAA544Rb19)

DAB staining on IHC-P; Samples: Rat  
Kidney Tissue; Primary Ab: 20µg/ml  
Rabbit Anti-Rat TLR4 Antibody Second  
Ab: 2µg/mL HRP-Linked Caprine Anti-  
Rabbit IgG Polyclonal Antibody  
(Catalog: SAA544Rb19)

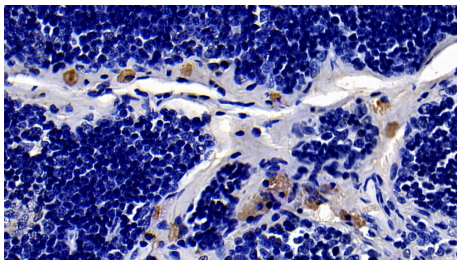
DAB staining on IHC-P;  
Samples: Rat Adrenal gland Tissue;  
Primary Ab: 20µg/ml Rabbit Anti-Rat  
TLR4 Antibody  
Second Ab: 2µg/mL HRP-Linked  
Caprine Anti-Rabbit IgG Polyclonal  
Antibody  
(Catalog: SAA544Rb19)



DAB staining on IHC-P;  
Samples: Rat Spinal cord Tissue;  
Primary Ab: 20µg/ml Rabbit Anti-Rat  
TLR4 Antibody  
Second Ab: 2µg/mL HRP-Linked  
Caprine Anti-Rabbit IgG Polyclonal  
Antibody  
(Catalog: SAA544Rb19)

DAB staining on IHC-P;  
Samples: Rat Spleen Tissue;  
Primary Ab: 20µg/ml Rabbit Anti-Rat  
TLR4 Antibody  
Second Ab: 2µg/mL HRP-Linked  
Caprine Anti-Rabbit IgG Polyclonal  
Antibody  
(Catalog: SAA544Rb19)

DAB staining on IHC-P;  
Sample: Rat Lymph node Tissue;  
Primary Ab: 20ug/ml Rabbit Anti-Rat  
TLR4 Antibody  
Second Ab: 2µg/mL HRP-Linked  
Caprine Anti-Rabbit IgG Polyclonal  
Antibody  
(Catalog: SAA544Rb19)



DAB staining on IHC-P;

Sample: Rat Thymus Tissue;

Primary Ab: 20ug/ml Rabbit Anti-Rat

TLR4 Antibody

Second Ab: 2µg/mL HRP-Linked

Caprine Anti-Rabbit IgG Polyclonal

Antibody

(Catalog: SAA544Rb19)

### **[ IMPORTANT NOTE ]**

The kit is designed for research use only, we will not be responsible for any issue if the kit was used in clinical diagnostic or any other procedures.