

PAC583Mu01

Polyclonal Antibody to Ubiquitin Associated Protein 1 (UBAP1)

Organism Species: *Mus musculus* (Mouse)

Instruction manual

FOR RESEARCH USE ONLY

NOT FOR USE IN CLINICAL DIAGNOSTIC PROCEDURES

13th Edition (Revised in Aug, 2023)

[PROPERTIES]

Source: Polyclonal antibody preparation

Host: Rabbit

Purification: Antigen-specific affinity chromatography followed by Protein A affinity chromatography

Traits: Liquid

Concentration: 0.49mg/mL

UOM: 20µL

Cross Reactivity: Rat

Applications: WB; IHC; ICC; IP.

[IMMUNOGEN]

Immunogen: Recombinant UBAP1 (Met1~Asp224) expressed in *E.coli*

Accession No.: RPC583Mu01

[APPLICATIONS]

Western blotting: 0.01-2µg/mL;

Immunohistochemistry: 5-20µg/mL;

Immunofluorescence: 5-20µg/mL;

Optimal working dilutions must be determined by end user.

[FORMULATION]

Form & Buffer: Supplied as solution form in PBS, pH7.4, containing 0.02% NaN₃, 50% glycerol.

[STORAGE AND STABILITY]

Storage: Avoid repeated freeze/thaw cycles.

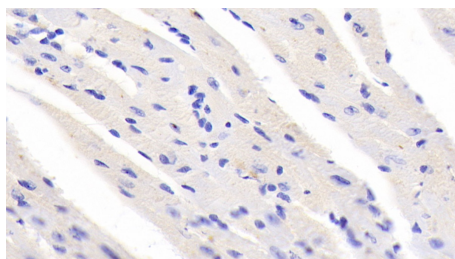
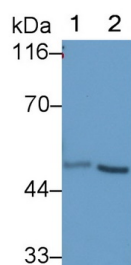
Store at 4°C for frequent use.

Aliquot and store at -20°C for 24 months.

Stability Test: The thermal stability is described by the loss rate. The loss rate was determined by accelerated thermal degradation test, that is, incubate the protein at 37°C for 48h, and no

obvious degradation and precipitation were observed. The loss rate is less than 5% within the expiration date under appropriate storage condition.

[IDENTIFICATION]



DAB staining on IHC-P; Samples:

Western Blot; Sample: Lane1: Rat	Mouse Cardiac Muscle Tissue; Primary
Heart lysate; Lane2: Mouse Heart	Ab: 20 μ g/ml Rabbit Anti-Mouse UBAP1
lysate Primary Ab: 0.1 μ g/ml Rabbit Anti-	Antibody Second Ab: 2 μ g/mL HRP-
Mouse UBAP1 Antibody Second Ab:	Linked Caprine Anti-Rabbit IgG
0.2 μ g/mL HRP-Linked Caprine Anti-	Polyclonal Antibody (Catalog:
Rabbit IgG Polyclonal Antibody	SAA544Rb19)
(Catalog: SAA544Rb19)	

[IMPORTANT NOTE]

The kit is designed for research use only, we will not be responsible for any issue if the kit was used in clinical diagnostic or any other procedures.