

PAP155Hu01

Polyclonal Antibody

To Wingless Type MMTV Integration Site Family, Member 3A (WNT3A)

Organism Species: Homo sapiens (Human)

Instruction manual

FOR IN VITRO USE AND RESEARCH USE ONLY

NOT FOR USE IN CLINICAL DIAGNOSTIC PROCEDURES

9th Edition (Revised in Jul, 2013)

[PRODUCT INFORMATION]

Immunogen: WNT3A, Human

Clonality: Polyclonal

Host: Rabbit

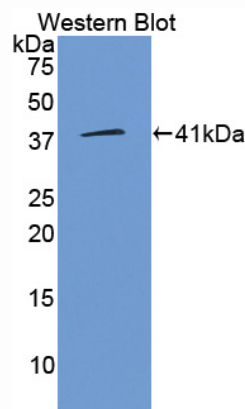
Immunoglobulin Type: IgG

Purification: Affinity Chromatography.

Applications: WB, ICC, IHC-P, IHC-F, ELISA

Concentration: 200µg/mL

UOM: 100µg



Sample: Recombinant WNT3A, Human

[IMMUNOGEN INFORMATION]

Immunogen: Recombinant WNT3A (Ser19~Lys352) expressed in *E. coli*.

Accession No.: RPP155Hu01

Sequence: The target protein is fused with two N-terminal Tags, His-tag and T7-tag and its sequence is listed below.

MGSSHHHHHH SSGLVPRGSH MASMTGGQQM GRGSEF- SY PIWWSLAVGP
QYSSLGSQPI LCASIPGLVP KQLRFCRNYV EIMPSVAEGI KIGIQECQHQ FRGRRWNCTT
VHDSLAIFGP VLDKATRESA FVHAIASAGV AFAVTRSCAE GTAAICGCSS RHQGSPGKGW
KWGGCSEDIE FGGMVSREFA DARENRPDAR SAMNRHNEA GRQAIASHMH
LKCKCHGLSG SCEVKTCWWS QPDFRAIGDF LDKYDSASE MVVEKHRESR
GWVETLRPRY TYFKVPTERD LVYYEASPNF CEPNPETGSF GTRDRTCNSV SHGIDGCDLL
CCGRGHNARA ERRREKRCRV FHWCCYVSCQ ECTRVYDVHT CK

[ANTIBODY SPECIFICITY]

The antibody is a rabbit polyclonal antibody raised against WNT3A. It has been selected for its ability to recognize WNT3A in immunohistochemical staining and western blotting.

[APPLICATIONS]

Western blotting: 1:100-400

Immunocytochemistry in formalin fixed cells: 1:100-500

Immunohistochemistry in formalin fixed frozen section: 1:100-500

Immunohistochemistry in paraffin section: 1:50-200

Enzyme-linked Immunosorbent Assay: 1:100-200

Optimal working dilutions must be determined by end user.

[CONTENTS]

Form & Buffer: Supplied as solution form in PBS, pH7.4, containing 0.02% NaN_3 , 50% glycerol.

[QUALITY CONTROL]

Content: The quality control contains recombinant WNT3A (Ser19~Lys352) disposed in loading buffer.

Usage: 10uL per well when 3,3'-Diaminobenzidine(DAB) as the substrate.
5uL per well when used in enhanced chemiluminescent (ECL).

Note: The quality control is specifically manufactured as the positive control. Not used for other purposes.

Loading Buffer: 100mM Tris(pH8.8), 2% SDS, 200mM NaCl, 50% glycerol, BPB 0.01%, NaN_3 0.02%.

[STORAGE]

Store at 4°C for frequent use. Stored at -20°C to -80°C in a manual defrost freezer for one year without detectable loss of activity. Avoid repeated freeze-thaw cycles.