

**PAC606Hu01**

**Polyclonal Antibody to X-linked Inhibitor Of Apoptosis Protein (XIAP)**

**Organism Species: *Homo sapiens (Human)***

***Instruction manual***

FOR RESEARCH USE ONLY

NOT FOR USE IN CLINICAL DIAGNOSTIC PROCEDURES

---

13th Edition (Revised in Aug, 2023)

### [ **PROPERTIES** ]

**Source:** Polyclonal antibody preparation

**Host:** Rabbit

**Purification:** Antigen-specific affinity chromatography followed by Protein A affinity chromatography

**Traits:** Liquid

**Concentration:** 0.5mg/ml

**UOM:** 100µl

**Cross Reactivity:** Porcine

**Applications:** WB,IHC,ICC/IF

### [ **IMMUNOGEN** ]

**Immunogen:** Recombinant XIAP (Met1~Ser497) expressed in *E.coli*

**Accession No.:** RPC606Hu01

### [ **APPLICATIONS** ]

Western blotting: 0.01-3µg/mL;

Immunohistochemistry: 2-30µg/mL;

Immunocytochemistry: 2-30µg/mL;

Optimal working dilutions must be determined by end user.

### [ **FORMULATION** ]

**Form & Buffer:** Supplied as solution form in 0.01M PBS, pH7.4, containing 0.05% Proclin-300, 50% glycerol.

### [ **STORAGE AND STABILITY** ]

**Storage:** Avoid repeated freeze/thaw cycles.

Store at 4°C for frequent use.

Aliquot and store at -20°C for 24 months.

**Stability Test:** The thermal stability is described by the loss rate. The loss rate was determined by accelerated thermal degradation test, that is, incubate the protein at 37°C for 48h, and no

obvious degradation and precipitation were observed. The loss rate is less than 5% within the expiration date under appropriate storage condition.

**[ IDENTIFICATION ]**

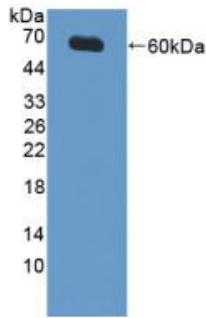
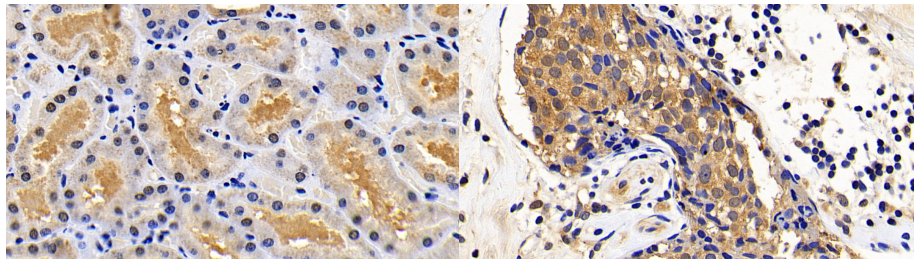
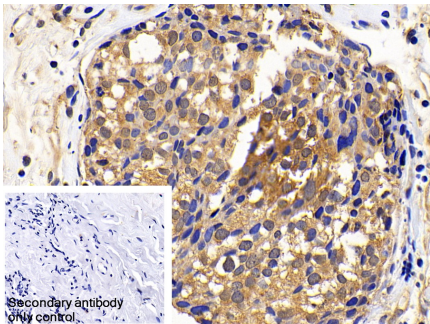


Figure. Western Blot; Sample: Recombinant XIAP, Human.

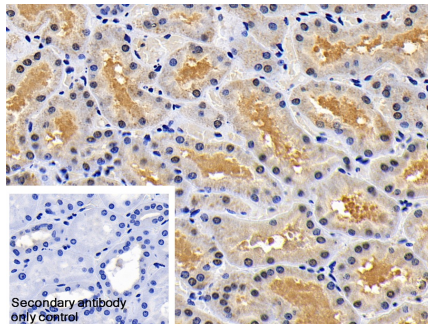


DAB staining on IHC-P; Samples: Human Kidney Tissue; Primary Ab: 30ug/ml Rabbit Anti-Human XIAP Antibody Second Ab: 2µg/mL HRP-Linked Caprine Anti-Rabbit IgG Polyclonal Antibody (Catalog: SAA544Rb19)

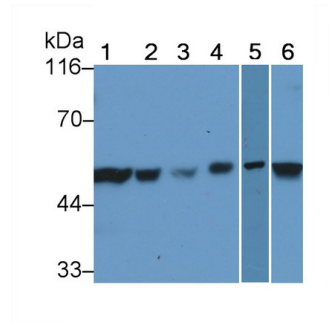
DAB staining on IHC-P; Samples: Human Breast cancer Tissue; Primary Ab: 30ug/ml Rabbit Anti-Human XIAP Antibody Second Ab: 2µg/mL HRP-Linked Caprine Anti-Rabbit IgG Polyclonal Antibody (Catalog: SAA544Rb19)



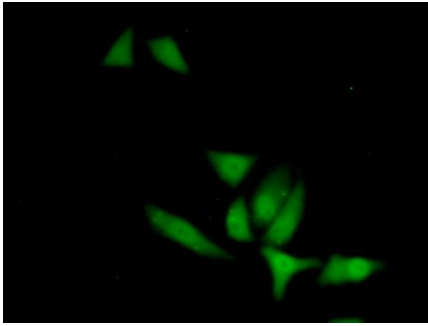
DAB staining on IHC-P; Sample: Human Breast cancer Tissue Primary Ab: 20µg/ml Rabbit Anti-Human XIAP Antibody Control: Used PBS instead of primary antibody Second Ab: 2µg/ml HRP-Linked Caprine Anti-Rabbit IgG Polyclonal Antibody (Catalog: SAA544Rb19)



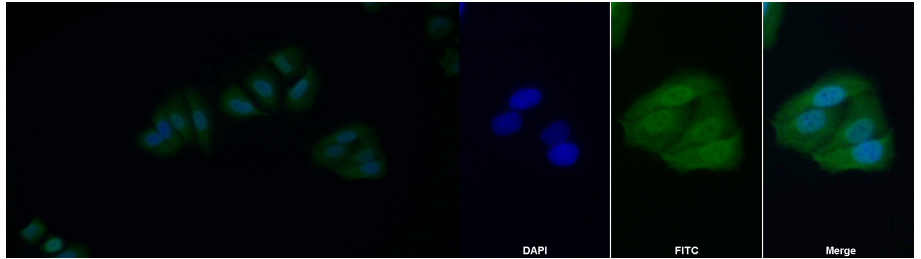
DAB staining on IHC-P; Sample: Human Kidney Tissue Primary Ab: 20µg/ml Rabbit Anti-Human XIAP Antibody Control: Used PBS instead of primary antibody Second Ab: 2µg/ml HRP-Linked Caprine Anti-Rabbit IgG Polyclonal Antibody (Catalog: SAA544Rb19)



Western Blot; Sample: Lane1: HepG2 cell lysate; Lane2: 293T cell lysate; Lane3: Jurkat cell lysate; Lane4: HeLa cell lysate; Lane5: Porcine Liver lysate; Lane6: Porcine Heart lysate Primary Ab: 0.2?g/ml Rabbit Anti-Human XIAP Antibody Second Ab: 0.2µg/mL HRP-Linked Caprine Anti-Rabbit IgG Polyclonal Antibody (Catalog: SAA544Rb19)



FITC staining on IF;  
 Samples: Human HepG2 Cells;  
 Primary Ab: 20µg/ml Rabbit Anti-Human XIAP Antibody  
 Second Ab: 1µg/ml FITC-Linked Caprine Anti-Rabbit IgG Polyclonal Antibody  
 (Catalog: SAA544Rb18)



FITC staining on IF;  
 Samples: Human MCF7 cell;  
 Primary Ab: 20µg/ml Rabbit Anti-Human XIAP Antibody  
 Second Ab: 1.5µg/ml FITC-Linked Caprine Anti-Rabbit IgG Polyclonal Antibody  
 (Catalog: SAA544Rb18)

FITC staining on IF; Sample: MCF7 cell  
 Primary Ab: 20µg/ml Rabbit Anti-Human XIAP Antibody  
 Second Ab: 2µg/ml FITC-Linked Caprine Anti-Rabbit IgG Polyclonal Antibody (Catalog: SAA544Rb11)

**[ IMPORTANT NOTE ]**

The kit is designed for research use only, we will not be responsible for any issue if the kit was used in clinical diagnostic or any other procedures.