



CSI290Ca01

**Primary Canine Olfactory Bulb Neuron Cells (OBNC)**

**Organism Species: Canis familiaris; Canine (Dog)**

***Instruction manual***

FOR RESEARCH USE ONLY

NOT FOR USE IN CLINICAL DIAGNOSTIC PROCEDURES

2nd Edition (Revised in Feb, 2025)

## [ DESCRIPTION ]

**Cell Type:** Neuron Cell

**Synonyms:** OBNC

**Strain:** Beagle

**Age:** 1-2 days

**Tissue Source:** Olfactory Bulb

**Disease:** Normal

**Size:**  $>5 \times 10^5$  cell/vial

## [ PROPERTIES ]

**Cell activity:**  $>85\%$  (Viability by Trypan Blue Exclusion).

**Formulation:** Frozen 1 mL or T25 flask.

**Biosafety:** Negative for HIV-1, HBV, HCV, mycoplasma, bacteria, yeast and fungi.

**Applications:** For research use only. It is not approved for human or animal use, or for application in clinical diagnostic procedures.

**Growth Properties:** Adherent

## [ CONTENTS ]

**Form & Buffer:** Supplied as solution form in frozen stock solution, containing 90% FBS+10% DMSO.

## [ USAGE ]

Upon receiving the cells in a T-25 flask at room temperature, immediately transfer the cells to 37°C, 5% CO<sub>2</sub> incubator; the cells in vials, directly and immediately transfer the cells from dry ice to liquid nitrogen.

### **Culture conditions:**

Special culture medium for neuronal cell:

Neurobasal-A Medium+B-27 Supplement (50X)+1%Penicillin-Streptomycin Solution

Temperature: 37°C

Condition: 95% air, 5% carbon dioxide

### **Cell recovery:**

After receiving the cells, shake at 37°C in a water bath until completely dissolved, transfer to a 15 ml centrifuge tube, add 3-5 times complete culture solution, 1000 rpm for 5 min, discard the supernatant, and place in a T25 flask for culture.

**Cell passage:**

Further culture of Canine Olfactory Bulb Neuron is guaranteed under the conditions we provide; However, Canine Olfactory Bulb Neuron is not recommended for expansion or long-term cultures because cells do not proliferate in culture.

**[ Shipping ]**

Dry ice.

**[ STORAGE ]**

Upon receiving, directly and immediately transfer the cells from dry ice to liquid nitrogen and keep the cells in liquid nitrogen until they are needed for experiments.

**[ IMPORTANT NOTE ]**

1. Canine Olfactory Bulb Neuron is not recommended for expanding or long-term cultures since the cells do not proliferate in culture.
2. It is recommended that culture bottles be coated with Collagen type I from rat tail, and the concentration of rat tail collagen coating is 0.1mg/ml.
3. The cell is for research use only, and we will not be responsible for any issue if the cell was used in clinical diagnostic or any other procedures.

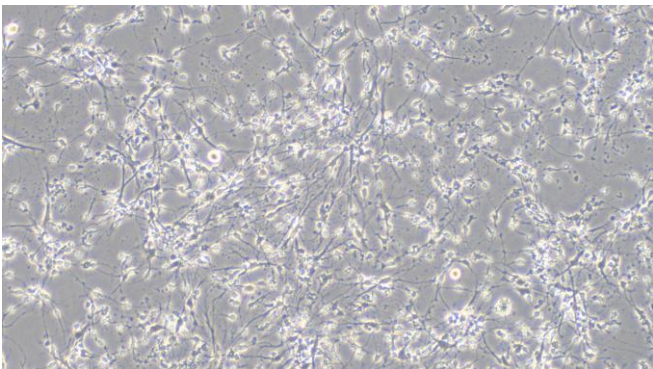
**[ Figure ]**

Figure 1

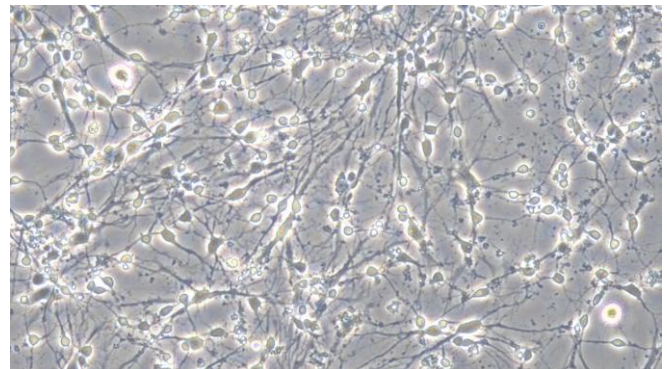


Figure 2

Figure 1 Morphology of Canine Olfactory Bulb Neuron (Optical microscope,×100)

Figure 2 Morphology of Canine Olfactory Bulb Neuron (Optical microscope,×200)