



CSI154Mu01

Primary Mouse Oligodendrocyte Precursor Cells (OPC)

Organism Species: *Mus musculus* (Mouse)

Instruction manual

FOR RESEARCH USE ONLY

NOT FOR USE IN CLINICAL DIAGNOSTIC PROCEDURES

1st Edition (Revised in Nov, 2022)

[DESCRIPTION]

Cell Type: Precursor cell

Synonyms: OPC

Species: *Mus musculus* (Mouse)

Tissue Source: Cerebral cortex

Size: $>5 \times 10^5$ cell/vial

[PROPERTIES]

Cell activity: $>85\%$ (Viability by Trypan Blue Exclusion).

Formulation: Frozen 1 mL (90%FBS+10% DMSO)

Biosafety: Negative for HIV-1, HBV, HCV, mycoplasma, bacteria, yeast and fungi.

Applications: For research use only. It is not approved for human or animal use, or for application in clinical diagnostic procedures.

Growth Properties: Adherent

[CONTENTS]

Form & Buffer: Supplied as solution form in frozen stock solution, containing 90% FBS+10% DMSO.

[USAGE]

Upon receiving the cells in a T-25 flask at room temperature, immediately transfer the cells to 37°C, 5% incubator; the cells in vials, directly and immediately transfer the cells from dry ice to liquid nitrogen.

Culture conditions:

OPCs medium: Neurobasal-A medium, L-glutamine, 10ng/ml PDGF-AA (Cloud Clone), 10ng/ml bFGF (Cloud Clone), B-27 Supplement (50X), 1% Penicillin-Streptomycin Solution.

Temperature: 37°C

Condition: 95% air, 5% carbon dioxide

Cell recovery:

After receiving the cells, shake at 37°C in a water bath until completely dissolved, transfer to a 15 ml centrifuge tube, add 3-5 times complete culture solution, 1000 rpm for 5 min, discard the supernatant, and place in a T25 flask for culture.

Cell passage:

Further cultivation of OPC is guaranteed under the conditions provided by us. However, OPC is not



recommended for expansion or long-term culture because cells do not proliferate in culture.

[Shipping]

Dry ice.

[STORAGE]

Upon receiving, directly and immediately transfer the cells from dry ice to liquid nitrogen and keep the cells in liquid nitrogen until they are needed for experiments.

[IMPORTANTNOTE]

1. Mouse OPCs are not recommended for expanding or long-term cultures due to limited expansion capacity.
2. The cell is for research use only, and we will not be responsible for any issue if the cell was used in clinical diagnostic or any other procedures.

[Figure]

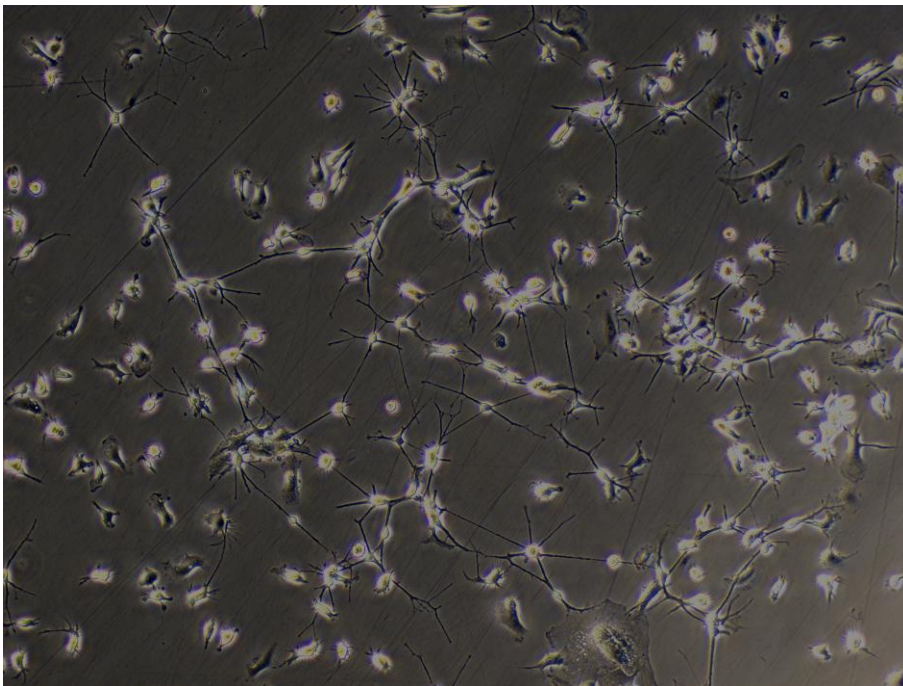


Figure 1 Morphology of Mouse OPC (Optical microscope,×100)