



CSI272Rb01

Primary Rabbit Tracheal Chondrocyte (TrC)

Organism Species: *Oryctolagus cuniculus* (Rabbit)

*Instruction manual*

FOR RESEARCH USE ONLY

NOT FOR USE IN CLINICAL DIAGNOSTIC PROCEDURES

2nd Edition (Revised in Mar, 2025)

## [ DESCRIPTION ]

**Cell Type:** Chondrocytes

**Synonyms:** TrC

**Strain:** New Zealand white rabbit

**Age:** 4-6 Months

**Tissue Source:** Trachea

**Disease:** Normal

**Size:**  $>5 \times 10^5$  cell/vial

## [ PROPERTIES ]

**Cell activity:**  $>85\%$  (Viability by Trypan Blue Exclusion).

**Formulation:** Frozen 1 mL or T25 flask.

**Biosafety:** Negative for HIV-1, HBV, HCV, mycoplasma, bacteria, yeast and fungi.

**Applications:** For research use only. It is not approved for human or animal use, or for application in clinical diagnostic procedures.

**Growth Properties:** Adherent

## [ CONTENTS ]

**Form & Buffer:** Supplied as solution form in frozen stock solution, containing 90% FBS+10% DMSO.

## [ USAGE ]

Upon receiving the cells in a T-25 flask at room temperature, immediately transfer the cells to 37°C, 5% CO<sub>2</sub> incubator; the cells in vials, directly and immediately transfer the cells from dry ice to liquid nitrogen.

**Culture conditions:**

DMEM+10%FBS+1% Chondrocyte growth supplement+1% Penicillin-Streptomycin Solution

Temperature: 37°C

Condition: 95% air, 5% carbon dioxide

**Cell recovery:**

After receiving the cells, shake at 37°C in a water bath until completely dissolved, transfer to a 15 ml centrifuge tube, add 3-5 times complete culture solution, 1000 rpm for 5 min, discard the supernatant, and place in a T25 flask for culture.



## Cell passage:

1. Cell passage when cell growth at 85-95%.
2. Discard the medium and wash with PBS 1-2 times.
3. Add 1 ml of Trypsin at 37°C, observe the cell under the microscope. If the cells are retracted and rounded, pat the culture flask to let the cells fall off. Stop digestion by adding 2 ml of complete medium containing 10% serum. Make it a single cell suspension.
4. Add the fresh medium to resuspend the cells. Unless otherwise stated, the recommended ratio of primary cells is 1/2.

## [ Shipping ]

Dry ice.

## [ STORAGE ]

Upon receiving, directly and immediately transfer the cells from dry ice to liquid nitrogen and keep the cells in liquid nitrogen until they are needed for experiments.

## [ IMPORTANT NOTE ]

The cell is for research use only, and we will not be responsible for any issue if the cell was used in clinical diagnostic or any other procedures.

## [ Figure ]

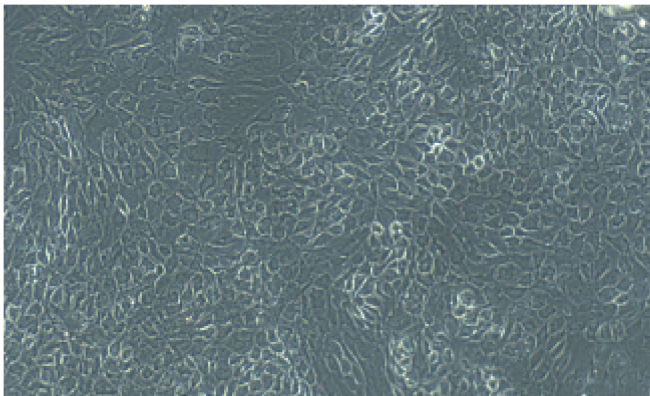


Figure 1

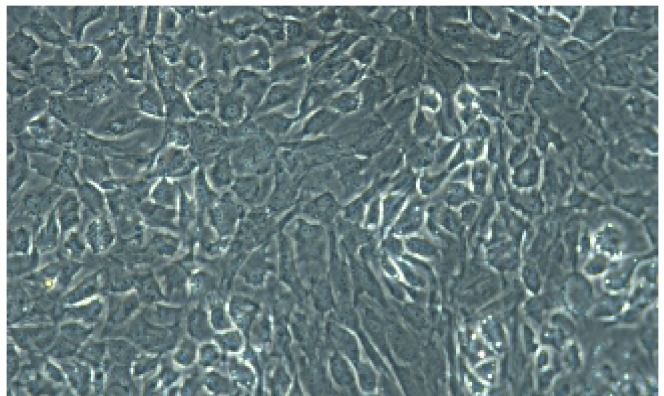


Figure 2

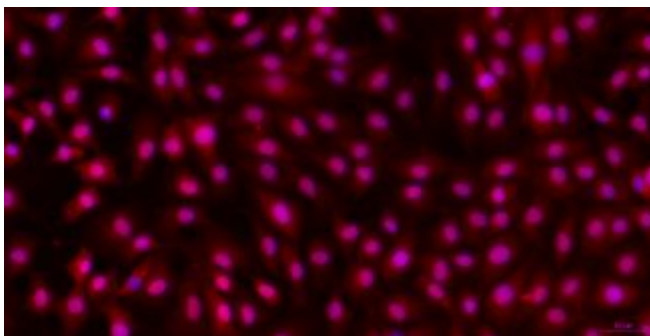


Figure 3

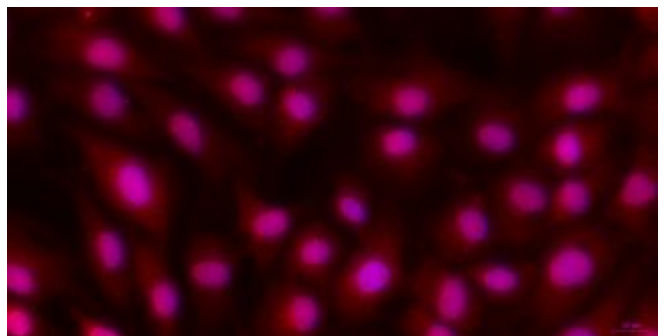


Figure 4



Figure 1 Morphology of Rabbit Tracheal Chondrocyte (Optical microscope,×100)

Figure 2 Morphology of Rabbit Tracheal Chondrocyte (Optical microscope,×200)

Figure 3 Immunofluorescence identification of Collagen Type II (COL2) specific antibody (×200)

Figure 4 Immunofluorescence identification of Collagen Type II (COL2) specific antibody (×400)