

CSI019Ra01**Primary Rat Corneal Epithelial Cells (CEC)****Organism Species: Rattus norvegicus (Rat)*****Instruction manual***

FOR RESEARCH USE ONLY

NOT FOR USE IN CLINICAL DIAGNOSTIC PROCEDURES

1st Edition (Revised in Jun, 2025)

[DESCRIPTION]

Cell Type: Epithelium**Synonyms:** CEC**Strain:** Sprague Dawley Rat**Age:** 7-8 Weeks**Tissue Source:** Cornea**Disease:** Normal**Size:** $>5 \times 10^5$ cell/vial

[PROPERTIES]

Cell activity: $>85\%$ (Viability by Trypan Blue Exclusion).**Formulation:** Frozen 1 mL or T25 flask.**Biosafety:** Negative for HIV-1, HBV, HCV, mycoplasma, bacteria, yeast and fungi.**Applications:** For research use only. It is not approved for human or animal use, or for application in clinical diagnostic procedures.**Growth Properties:** Adherent

[CONTENTS]

Form & Buffer: Supplied as solution form in frozen stock solution, containing 90% FBS+10% DMSO.

[USAGE]

Upon receiving the cells in a T-25 flask at room temperature, immediately transfer the cells to 37°C, 5% CO₂ incubator; the cells in vials, directly and immediately transfer the cells from dry ice to liquid nitrogen.

Culture conditions:

DMEM/F12+5%FBS+1% Penicillin-Streptomycin Solution+1% Epithelial Cell Growth Supplement

Temperature: 37°C

Condition: 95% air, 5% carbon dioxide

Cell recovery:

After receiving the cells, shake at 37°C in a water bath until completely dissolved, transfer to a 15 ml centrifuge tube, add 3-5 times complete culture solution, 1000 rpm for 5 min, discard the supernatant, and place in a T25 flask for culture.

Cell passage:

1. Cell passage when cell growth at 85-95%.
2. Discard the medium and wash with PBS 1-2 times.
3. Add 1 ml of Trypsin at 37°C, observe the cell under the microscope. If the cells are retracted and rounded, pat the culture flask to let the cells fall off. Stop digestion by adding 2 ml of complete medium containing 10% serum. Make it a single cell suspension.
4. Add the fresh medium to resuspend the cells. Unless otherwise stated, the recommended ratio of primary cells is 1/2.

[Shipping]

Dry ice.

[STORAGE]

Upon receiving, directly and immediately transfer the cells from dry ice to liquid nitrogen and keep the cells in liquid nitrogen until they are needed for experiments.

[IMPORTANT NOTE]

1. The cultured cycle of Primary Rat Nasal Mucosal Epithelial Cell is limited in *vitro*. It is suggested that after cell resuscitation, the special growth medium and correct operation method recommended by us should be used for culture, and it should be used for follow-up experiments as soon as possible.
2. It is recommended that culture bottles be coated with Collagen type I from rat tail, and the concentration of rat tail collagen coating is 2-5µg/cm².
3. The cell is for research use only, and we will not be responsible for any issue if the cell was used in clinical diagnostic or any other procedures.

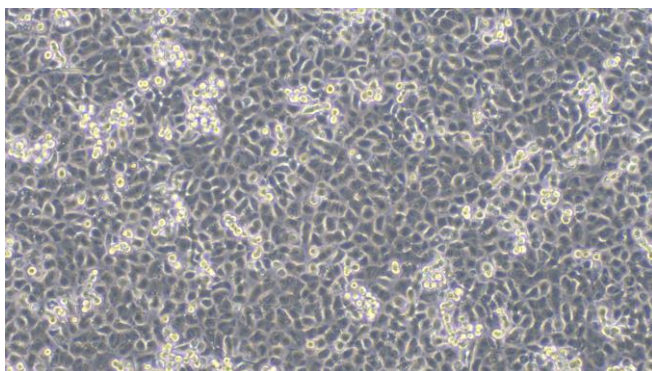
[Figure]

Figure 1

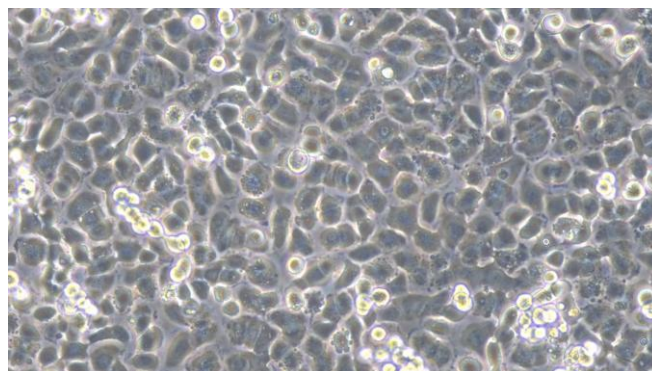


Figure 2

Figure 1 Morphology of Rat Corneal Epithelial Cells (Optical microscope,×100)

Figure 2 Morphology of Rat Corneal Epithelial Cells (Optical microscope,×200)