

RPC271Hu02 200µg

Recombinant 5-Hydroxytryptamine Receptor 1A (HTR1A)

Organism Species: *Homo sapiens (Human)*

Instruction manual

FOR RESEARCH USE ONLY

NOT FOR USE IN CLINICAL DIAGNOSTIC PROCEDURES

13th Edition (Revised in Aug, 2023)

[PROPERTIES]

Source: Prokaryotic expression

Host: *E.coli*

Residues: Met1~Gln422

Tags: His and TrxA Taq

Subcellular Location: Membrane

Purity: > 80%

Traits: Freeze-dried powder

Buffer formulation: PBS, pH7.4, containing 0.01% SKL, 5% Trehalose .

Original Concentration: 80µg/mL

Applications: Positive Control; Immunogen; SDS-PAGE; WB.

(May be suitable for use in other assays to be determined by the end user.)

Predicted isoelectric point: 9.1

Predicted Molecular Mass: 66.5kDa

Accurate Molecular Mass: 70kDa as determined by SDS-PAGE reducing conditions.

Phenomenon explanation:

The possible reasons that the actual band size differs from the predicted are as follows:

1. Splice variants: Alternative splicing may create different sized proteins from the same gene.
2. Relative charge: The composition of amino acids may affects the charge of the protein.
3. Post-translational modification: Phosphorylation, glycosylation, methylation etc.
4. Post-translation cleavage: Many proteins are synthesized as pro-proteins, and then cleaved to give the active form.
5. Polymerization of the target protein: Dimerization, multimerization etc.

[USAGE]

Reconstitute in ddH₂O to a concentration of 0.1-0.5 mg/mL. Do not vortex.

[STORAGE AND STABILITY]

Storage: Avoid repeated freeze/thaw cycles.

Store at 2-8°C for one month.

Aliquot and store at -80°C for 12 months.

Stability Test: The thermal stability is described by the loss rate. The loss rate was determined by accelerated thermal degradation test, that is, incubate the protein at 37°C for 48h, and no obvious degradation and precipitation were observed. The loss rate is less than 5% within the expiration date under appropriate storage condition.

[**SEQUENCE**]

```
MDVLSPGQGN NTTSPAPFE TGGNTTGISD VTVSYQVITS LLLGTLIFCA
VLGNACVAA IALERSLQNV ANYLIGSLAV TDMVSVLVL PMAALYQVLN
KWTLGQVTCDFIALDVLCC TSSILHLCAI ALDRYWAITD PIDYVNRTP
RRAAALISLT WLIGFLISIP PMLGWRTPE RSDPDACTIS KDHGYTIYST
FGAFYIPLLL MLVLYGRIFR AARFRIRKTV KKVEKTGADT RHGASPAPQP
KKSVMGESGS RNWRLGVESK AGGALCANGA VRQGDGAAL EVIEVHRVGN
SKEHLPLPSE AGPTPCAPAS FERKNERNAE AKRKMALARE RKTVKTLGII
MGTFILCWLP FFIVALVLPF CESSCHMPTL LGAIINWLGYSNSLLNPVIY
AYFNKDFQNA FKKIIKCKFC RQ
```

[**IDENTIFICATION**]

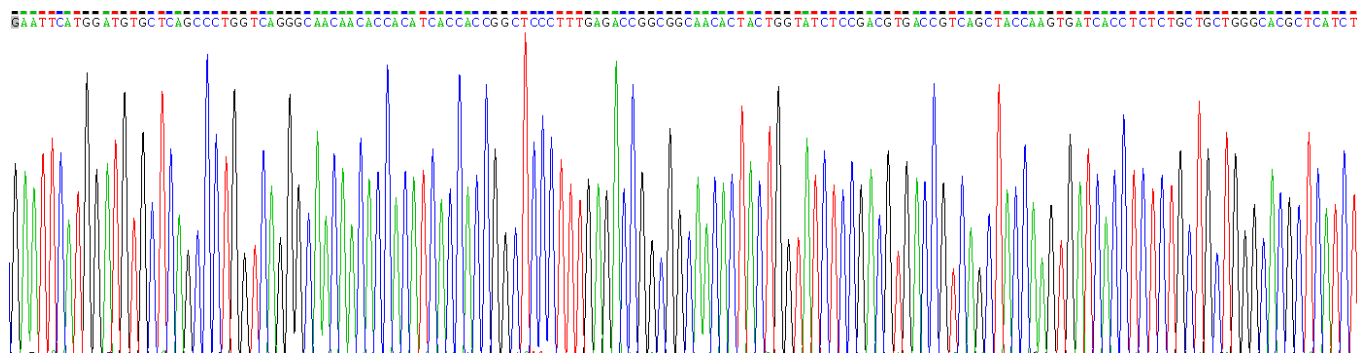


Figure . Gene Sequencing (extract)

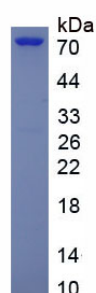


Figure. SDS-PAGE

[IMPORTANT NOTE]

The kit is designed for research use only, we will not be responsible for any issue if the kit was used in clinical diagnostic or any other procedures.