

RPG302Hu01 1

Recombinant Absent In Melanoma 2 (AIM2)

Organism Species: *Homo sapiens (Human)*

Instruction manual

FOR RESEARCH USE ONLY

NOT FOR USE IN CLINICAL DIAGNOSTIC PROCEDURES

12th Edition (Revised in Aug, 2016)

[PROPERTIES]

Source: Prokaryotic expression

Host: *E.coli*

Residues: Met1~Thr343

Tags: N-terminal His Tag

Subcellular Location: Nucleus, Cytoplasm

Purity: > 97%

Traits: Freeze-dried powder

Buffer formulation: 20mM Tris, 150mM NaCl, pH8.0, containing 1mM EDTA, 1mM DTT, 0.01% SKL, 5% Trehalose and Proclin300.

Original Concentration: 200µg/mL

Applications: Positive Control; Immunogen; SDS-PAGE; WB.

(May be suitable for use in other assays to be determined by the end user.)

Predicted isoelectric point: 9.8

Predicted Molecular Mass: 43.7kDa

Accurate Molecular Mass: 44kDa as determined by SDS-PAGE reducing conditions.

[USAGE]

Reconstitute in 20mM Tris, 150mM NaCl (pH8.0) to a concentration of 0.1-1.0 mg/mL. Do not vortex.

[STORAGE AND STABILITY]

Storage: Avoid repeated freeze/thaw cycles.

Store at 2-8°C for one month.

Aliquot and store at -80°C for 12 months.

Stability Test: The thermal stability is described by the loss rate. The loss rate was determined by accelerated thermal degradation test, that is, incubate the protein at 37°C for 48h, and no obvious degradation and precipitation were observed. The loss rate is less than 5% within the expiration date under appropriate storage condition.

[SEQUENCE]

```
MESKYKEILL LTGLDNITDE ELDRFKFFLS DEFNIATGKL HTANRIQVAT
LMIQNAGAVS AVMKTIRIFQ KLNVMLLAKR LQEEKEKVDK QYKSVTKPKP
LSQAEMSPAA SAAIRNDVAK QRAAPKVSHPH VKPEQKQMVVA QQESIREGFQ
KRCLPVMVLK AKKPFTFETQ EGKQEMFHAT VATEKEFFFV KVFNTLLKDK
FIPKRRIIIA RYYRHSGFLE VNSASRVLDA ESDQKVNVPV NIIRKAGETP
KINTLQTQPL GTIVNGLFVV QKVTEKKKNI LFDLSDNTGK MEVLGVRNED
TMKCKEGDKV RLTFFTLSKN GEKLQLTSGV HSTIKVIKAK KKT
```

[IDENTIFICATION]

AGCCTCCGTCAGAAATATTTTGTTCCTTAAAGAGGATATACATGGGGCAGCGCATCATCATCATCAGCAGCGGGCTGGTCCCGCGTCCAGCCATATGGCTAGGATGACTGGTGGACGCAATGGGTCCGGATCCATGGAGAGTAAATACAAGGAGATACTCTTGTCTAACAGGCTGGATAACATCACT

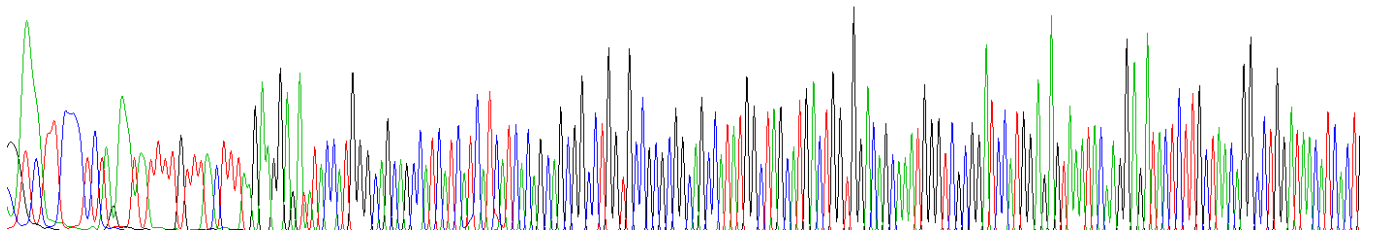
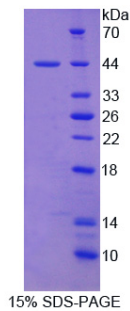


Figure . Gene Sequencing (extract)



[IMPORTANT NOTE]

The kit is designed for research use only, we will not be responsible for any issue if the kit was used in clinical diagnostic or any other procedures.