

RPA002Bo01 100µg

Recombinant Activated Leukocyte Cell Adhesion Molecule (ALCAM)

Organism Species: *Bos taurus*; Bovine (Cattle)

Instruction manual

FOR RESEARCH USE ONLY

NOT FOR USE IN CLINICAL DIAGNOSTIC PROCEDURES

13th Edition (Revised in Aug, 2023)

[PROPERTIES]

Source: Prokaryotic expression

Host: *E.coli*

Residues: Trp28~Lys527

Tags: N-terminal His Tag

Subcellular Location: Membrane

Purity: > 97%

Traits: Freeze-dried powder

Buffer formulation: PBS, pH7.4, containing 0.01% SKL, 5% Trehalose.

Original Concentration: 200µg/mL

Applications: Positive Control; Immunogen; SDS-PAGE; WB.

(May be suitable for use in other assays to be determined by the end user.)

Predicted isoelectric point: 5.48

Predicted Molecular Mass: 59.5kDa

Accurate Molecular Mass: 59.5kDa as determined by SDS-PAGE reducing conditions.

[USAGE]

Reconstitute in 10mM PBS (pH7.4) to a concentration of 0.1-1.0 mg/mL. Do not vortex.

[STORAGE AND STABILITY]

Storage: Avoid repeated freeze/thaw cycles.

Store at 2-8°C for one month.

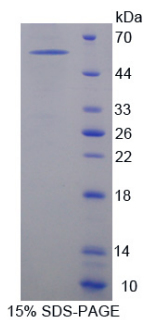
Aliquot and store at -80°C for 12 months.

Stability Test: The thermal stability is described by the loss rate. The loss rate was determined by accelerated thermal degradation test, that is, incubate the protein at 37°C for 48h, and no obvious degradation and precipitation were observed. The loss rate is less than 5% within the expiration date under appropriate storage condition.

[SEQUENCE]

WYT VNSAYGDTII MPCRVDVPQN
 LMFGKWKYEK PDGSPVFI AF RSSTKKSQY DDVPEYKDRL NLSNYTLSI
 SNAKISDEKR FVCMLVTEDD VFEAPT VVKV FKQPSKPEIV SKAPFLETDK
 LKKLGECISK DSYFDGNITW YRNGKVLQAL EGAVVIFRK QMDSVTQLYT
 MTSSLEYKTT KADIQMPFTC SVTYYGPSGQ KTVYSEQAVF DIYYPTEQVT
 IQVLPSKNAI KEGDNITLKC LGNGNPPPEE FLFYLPQPE GIRSSNTYTL
 TDVKRNATGD YKCSLVDKKS MIAAAITVH YLDLSLNPSG EVTKQIGDAL
 PVSCTISASR NATVVMKDN VKLRSSPSFS SLHYQDAGNY VCETALQEVE
 GLKKRESLTL IVEGKPKQIKM TKKTDPSGLS KTIICHVEGF PKPAIQWTIT
 GSGSVINQTE ESPYINGRYY SKIIISPEEN VTLTCTAENQ LERTVNSLNV
 SAISIPHEDE ADEISDENKE KVNDQAK

[IDENTIFICATION]



[IMPORTANT NOTE]

The kit is designed for research use only, we will not be responsible for any issue if the kit was used in clinical diagnostic or any other procedures.