

**RPG097Hu01 100ug**

**Recombinant Adaptor Related Protein Complex 1 Beta 1 (AP1b1)**

**Organism Species: *Homo sapiens (Human)***

***Instruction manual***

FOR RESEARCH USE ONLY

NOT FOR USE IN CLINICAL DIAGNOSTIC PROCEDURES

---

13th Edition (Revised in Aug, 2023)

**[ PROPERTIES ]**

**Source:** Prokaryotic expression

**Host:** *E.coli*

**Residues:** Thr2~Val255

**Tags:** N-terminal His Tag

**Subcellular Location:** Secreted

**Purity:** > 90%

**Traits:** Freeze-dried powder

**Buffer formulation:** pH7.4, containing 0.01% SKL, 5% Trehalose

**Original Concentration:** 200µg/mL

**Applications:** Positive Control; Immunogen; SDS-PAGE; WB.

(May be suitable for use in other assays to be determined by the end user.)

**Predicted isoelectric point:** 5.3

**Predicted Molecular Mass:** 32.1kDa

**Accurate Molecular Mass:** 30kDa as determined by SDS-PAGE reducing conditions.

**[ USAGE ]**

Reconstitute in 10mM PBS (pH7.4) to a concentration of 0.1-1.0 mg/mL. Do not vortex

**[ STORAGE AND STABILITY ]**

**Storage:** Avoid repeated freeze/thaw cycles.

Store at 2-8°C for one month.

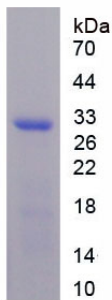
Aliquot and store at -80°C for 12 months.

**Stability Test:** The thermal stability is described by the loss rate. The loss rate was determined by accelerated thermal degradation test, that is, incubate the protein at 37°C for 48h, and no obvious degradation and precipitation were observed. The loss rate is less than 5% within the expiration date under appropriate storage condition.

**[ SEQUENCE ]**

DDL VTVKTPAF AE SVTEGDVRWE KAVGDTVAED EVVCEIETDK TSVQVPS PAN  
GVIEALLVPD GGKVEGGTPL FTLRKTGAAP AKAKPAEAPA AAPKA EPTA  
AAVPPPA API PTQMPPVPSP SQPPSGKPVS AVKPTVAPPL AEPGAGKGLR  
SEHREKM NRM RQRIAQRLKE AQNTCAMLTT FNEIDMSNIQ EMRARHKEAF  
LKKHNLK LGF MSAFVKASAF ALQEQPVVNA VIDDTTKEVV YRDYIDISVA  
VATPRGLVVP VIRNVEAMNF ADIERTITEL GEKARKNELA IEDMDGGTFT  
ISNGGVFGSL FGTPPIINPPQ SAILGMHGIF DRPVAIGGKV EVRPM MYVAL  
TYDHRLIDGR EAVTFLRKIK AAVEDPRVLL LDL

**[ IDENTIFICATION ]**



**[ IMPORTANT NOTE ]**

The kit is designed for research use only, we will not be responsible for any issue if the kit was used in clinical diagnostic or any other procedures.