

RPE827Hu01 500µg

Recombinant Aldehyde Dehydrogenase 1 Family, Member B1 (ALDH1B1)

Organism Species: *Homo sapiens (Human)*

Instruction manual

FOR RESEARCH USE ONLY

NOT FOR USE IN CLINICAL DIAGNOSTIC PROCEDURES

12th Edition (Revised in Aug, 2016)

[PROPERTIES]

Source: Prokaryotic expression

Host: *E.coli*

Residues: Arg18~Ser517

Tags: N-terminal His Tag

Subcellular Location: Mitochondrion

Purity: > 95%

Traits: Freeze-dried powder

Buffer formulation: PBS, pH7.4, containing 0.01% SKL, 5% Trehalose.

Original Concentration: 500µg/mL

Applications: Positive Control; Immunogen; SDS-PAGE; WB.

(May be suitable for use in other assays to be determined by the end user.)

Predicted isoelectric point: 6.0

Predicted Molecular Mass: 59.0kDa

Accurate Molecular Mass: 59kDa as determined by SDS-PAGE reducing conditions.

[USAGE]

Reconstitute in 10mM PBS (pH7.4) to a concentration of 0.1-1.0 mg/mL. Do not vortex.

[STORAGE AND STABILITY]

Storage: Avoid repeated freeze/thaw cycles.

Store at 2-8°C for one month.

Aliquot and store at -80°C for 12 months.

Stability Test: The thermal stability is described by the loss rate. The loss rate was determined by accelerated thermal degradation test, that is, incubate the protein at 37°C for 48h, and no obvious degradation and precipitation were observed. The loss rate is less than 5% within the expiration date under appropriate storage condition.

[SEQUENCE]

```

                RYS SAAALPSPIL NPDIPYNQLF INNEWQDAVS
KKTFTVNPT TGEVIGHVAE GDRADVDRV KAAREAFRLG SPWRRMDASE
RGRLLNLLAD LVERDRVYLA SLETLDNGKP FQESYALDLD EVIKVYRYFA
GWADKWHGKT IPMDGQHFCF TRHEPVGVCQ QIIPWNFPLV MQGWKLAPAL
ATGNTVVMKV AEQTPLSALY LASLIKEAGF PPGVVNIITG YGPTAGAAIA
QHVDVDKVAF TGSTEVGHLI QKAAGDSNLK RVTLELGGKS PSIVLADADM
EHAVEQCHEA LFFNMGQCCC AGSRTFVEES IYNEFLERTV EKAKQRKVG N
PFELDTQQGP QVDKEQFERV LGYIQLGQKE GAKLLCGGER FGERGFFIKP
TVFGGVQDDM RIAKEEIFGP VQPLFKFKKI EEVVERANNT RYGLAAAVFT
RDLDKAMYFT QALQAGTVWV NTYNIIVTCHT PFGGFKESGN GRELGEDGLK
AYTEVKVTI KVPQKNS

```

[IDENTIFICATION]

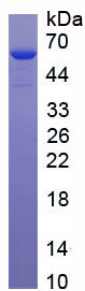


Figure. SDS-PAGE

[IMPORTANT NOTE]

The kit is designed for research use only, we will not be responsible for any issue if the kit was used in clinical diagnostic or any other procedures.