

**RPA217Ra01 100µg**

**Recombinant Alpha-1-Microglobulin/Bikunin Precursor (a1M)**

**Organism Species: *Rattus norvegicus* (Rat)**

***Instruction manual***

**FOR RESEARCH USE ONLY**

**NOT FOR USE IN CLINICAL DIAGNOSTIC PROCEDURES**

---

12th Edition (Revised in Aug, 2016)

## **[ PROPERTIES ]**

**Source:** Prokaryotic expression

**Host:** *E.coli*

**Residues:** Asp20~Ala202

**Tags:** N-terminal His Tag

**Subcellular Location:** Secreted

**Purity:** > 95%

**Traits:** Freeze-dried powder

**Buffer formulation:** PBS, pH7.4, containing 0.01% SKL, 1mM DTT, 5% Trehalose and Proclin300.

**Original Concentration:** 200µg/mL

**Applications:** Positive Control; Immunogen; SDS-PAGE; WB.

(May be suitable for use in other assays to be determined by the end user.)

**Predicted isoelectric point:** 6.4

**Predicted Molecular Mass:** 22.1kDa

**Accurate Molecular Mass:** 22kDa as determined by SDS-PAGE reducing conditions.

## **[ USAGE ]**

## **[ STORAGE AND STABILITY ]**

**Storage:** Avoid repeated freeze/thaw cycles.

Store at 2-8°C for one month.

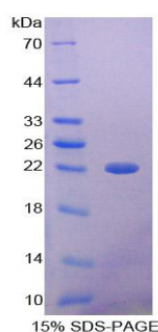
Aliquot and store at -80°C for 12 months.

**Stability Test:** The thermal stability is described by the loss rate. The loss rate was determined by accelerated thermal degradation test, that is, incubate the protein at 37°C for 48h, and no obvious degradation and precipitation were observed. The loss rate is less than 5% within the expiration date under appropriate storage condition.

## **[ SEQUENCE ]**

D NVPTLPDIQV QENFNEARIY GKWFNLAVGS  
TCPWLRRIKN KMSVSTLVLQ EGATEAEISV TSTQWRKGVC EEISGVYQKT  
DIDGKFLYHK SKWNATLESY VVHTNYDEYA IFLTKKFSHR HGPTITAKLY  
GREPQLRDSL LQEFREVALS VGIPENSIVF MADRGECVPG DREVESTSFA  
RA

**[ IDENTIFICATION ]**



**[ IMPORTANT NOTE ]**

The kit is designed for research use only, we will not be responsible for any issue if the kit was used in clinical diagnostic or any other procedures.