

**RPD066Hu02 50ug**

**Recombinant Apelin (APLN)**

**Organism Species: *Homo sapiens (Human)***

***Instruction manual***

FOR RESEARCH USE ONLY

NOT FOR USE IN CLINICAL DIAGNOSTIC PROCEDURES

---

12th Edition (Revised in Aug, 2016)

**[ PROPERTIES ]**

**Source:** Prokaryotic expression

**Host:** *E.coli*

**Residues:** Ser24~Phe77

**Tags:** Two N-terminal Tags, His-tag and MBP-tag

**Subcellular Location:** Secreted

**Purity:** > 95%

**Traits:** Freeze-dried powder

**Buffer formulation:** 20mM Tris, 150mM NaCl, pH8.0, containing 1mM EDTA, 1mM DTT, 0.01%skl, 5% Trehalose and Proclin300.

**Original Concentration:** 200µg/mL

**Applications:** Positive Control; Immunogen; SDS-PAGE; WB.

(May be suitable for use in other assays to be determined by the end user.)

**Predicted isoelectric point:** 6.3

**Predicted Molecular Mass:** 56.1kDa

**Accurate Molecular Mass:** 56kDa as determined by SDS-PAGE reducing conditions.

**[ USAGE ]**

Reconstitute in 20mM Tris, 150mM NaCl (pH8.0) to a concentration of 0.1-1.0 mg/mL. Do not vortex.

**[ STORAGE AND STABILITY ]**

**Storage:** Avoid repeated freeze/thaw cycles.

Store at 2-8°C for one month.

Aliquot and store at -80°C for 12 months.

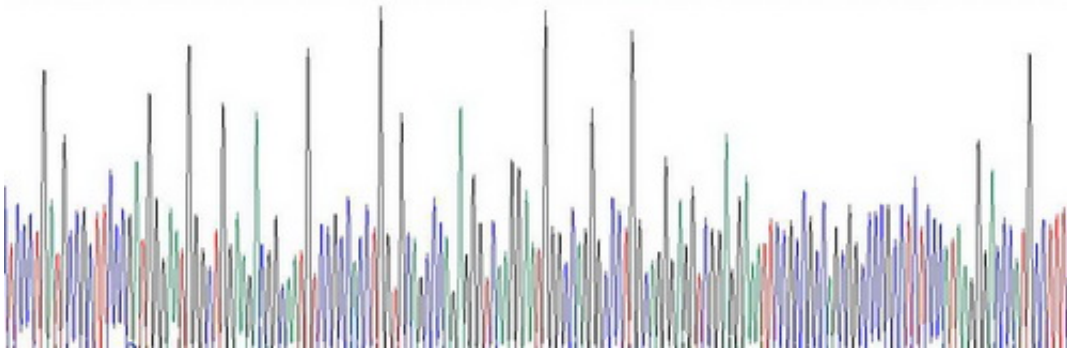
**Stability Test:** The thermal stability is described by the loss rate. The loss rate was determined by accelerated thermal degradation test, that is, incubate the protein at 37°C for 48h, and no obvious degradation and precipitation were observed. The loss rate is less than 5% within the expiration date under appropriate storage condition.

**[ SEQUENCE ]**

SLMPLPD GNGLEDGNVR HLVQPRGSRN  
GPGPWQGGRR KFRRQRPRLS HKGPMPF

**[ IDENTIFICATION ]**

TTCCCTGATGTCCTTCCGCGTGGGARTGGGCTGGAGGCGGCATGTCGGCCACC TGGTGCACCCGAGGAGTCAAGAAATGGGOCAGGGGCTGGCAGGAGGTTCGGAGAAATTCGCCCGCCAGCGCCCGGCTCTCCCAAGGGACCCCTTTC  
S L M P L P D G G L E D G H V R R L V Q P R G S R H G P G P W Q G G R A K F R R Q R P R L S R K G P M P F



**Figure . Gene Sequencing (extract)**

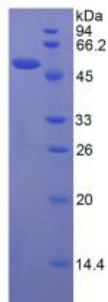


Figure. SDS-PAGE

**[ IMPORTANT NOTE ]**

The kit is designed for research use only, we will not be responsible for any issue if the kit was used in clinical diagnostic or any other procedures.