

RPA310Mu01 10µg

Recombinant Apolipoprotein H (APOH)

Organism Species: Mus musculus (Mouse)

Instruction manual

FOR IN VITRO USE AND RESEARCH USE ONLY

NOT FOR USE IN CLINICAL DIAGNOSTIC PROCEDURES

11th Edition (Revised in May, 2016)

[PROPERTIES]

Source: Prokaryotic expression.

Host: *E. coli*

Residues: Arg21~Cys345

Tags: N-terminal His-Tag

Tissue Specificity: Liver, Blood.

Subcellular Location: Secreted.

Purity: >95%

Traits: Freeze-dried powder

Buffer formulation: 20mM Tris, 150mM NaCl, pH8.0, containing 1mM EDTA, 1mM DTT, 0.01% sarcosyl, 5%Trehalose and Proclin300.

Original Concentration: 200ug/mL

Applications: SDS-PAGE; WB; ELISA; IP; CoIP; ReporterAssays; Purification; Amine Reactive Labeling.

(May be suitable for use in other assays to be determined by the end user.)

Predicted isoelectric point: 8.5

Predicted Molecular Mass: 38.1kDa

Accurate Molecular Mass: 38kDa as determined by SDS-PAGE reducing conditions.

[USAGE]

Reconstitute in 20mM Tris, 150mM NaCl (pH8.0) to a concentration of 0.1-1.0 mg/mL. Do not vortex.

[STORAGE AND STABILITY]

Storage: Avoid repeated freeze/thaw cycles.

Store at 2-8°C for one month.

Aliquot and store at -80°C for 12 months.

Stability Test: The thermal stability is described by the loss rate. The loss rate was determined by accelerated thermal degradation test, that is, incubate the protein at 37°C for 48h, and no obvious degradation and precipitation were observed. The loss rate is less than 5% within the expiration date under appropriate storage condition.

[SEQUENCE]

```

                                RICPKDDL  FATVVPLKTS  YDPGEQIVYS
CKPGYVSRGG  MRRFTCPLTG  MWPINTLRCV  PRVCPFAGIL  ENGIVRYTSF
EYPKNISFAC  NPGFFLNGTS  SSKCTEEGKW  SPDIPACARI  TCPPPPVPKF
ALLKDYRPSA  GNNSLYQDTV  VFKCLPHFAM  IGNDTVMCTE  QGNWTRLPEC
LEVKCPFPPR  PENGYVNYPA  KPVLLYKDKA  TFGCHETYKL  DGPEEAECTK
TGTWSFLPTC  RESCKLPVKK  ATVLYQGMRV  KIQEQFKNGM  MHGDKIHFYC
KNKEKKCSYT  VEAHCRDGTI  EIPSCFKEHS  SLAFWKTDAS  ELTPC
    
```

[IDENTIFICATION]

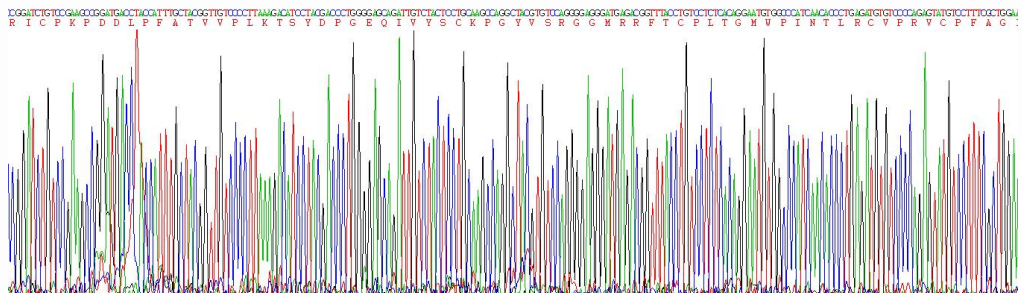


Figure 1. Gene Sequencing (Extract)

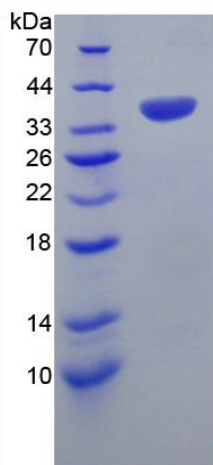


Figure 2. SDS-PAGE