

RPN942Hu03 100µg

Recombinant Autophagy Related Protein 16 Like Protein 1 (ATG16L1)

Organism Species: *Homo sapiens (Human)*

Instruction manual

FOR RESEARCH USE ONLY

NOT FOR USE IN CLINICAL DIAGNOSTIC PROCEDURES

12th Edition (Revised in Aug, 2016)

[PROPERTIES]

Source: Prokaryotic expression

Host: *E.coli*

Residues: Met1~Tyr607

Tags: N-terminal His Tag

Subcellular Location: Membrane, Cytoplasm

Purity: > 90%

Traits: Freeze-dried powder

Buffer formulation: 20mM Tris, 150mM NaCl, pH8.0, containing 0.01% SKL, 5% Trehalose.

Original Concentration: 200µg/mL

Applications: Positive Control; Immunogen; SDS-PAGE; WB.

(May be suitable for use in other assays to be determined by the end user.)

Predicted isoelectric point: 6.6

Predicted Molecular Mass: 71.7kDa

Accurate Molecular Mass: 70kDa as determined by SDS-PAGE reducing conditions.

[USAGE]

Reconstitute in 20mM Tris, 150mM NaCl (pH8.0) to a concentration of 0.1-1.0 mg/mL. Do not vortex.

[STORAGE AND STABILITY]

Storage: Avoid repeated freeze/thaw cycles.

Store at 2-8°C for one month.

Aliquot and store at -80°C for 12 months.

Stability Test: The thermal stability is described by the loss rate. The loss rate was determined by accelerated thermal degradation test, that is, incubate the protein at 37°C for 48h, and no obvious degradation and precipitation were observed. The loss rate is less than 5% within the expiration date under appropriate storage condition.

[SEQUENCE]

MSSGLRAADF PRWKRHISEQ LRRRDRLQRQ AFEEIILQYN KLEKSDLHS
 VLAQKLQAEK HDVPMRHEIS PGHDGTWNDN QLQEMAQLRI KHQEELTELH
 KKRGEAQLV IDLNNQMQRK DREMOMNEAK IAECLOTISD LETECLDLRT
 KLCDLERANQ TLKDEYDALQ ITFTALEGKL RKTTEENQEL VTRWMAEKAQ
 EANRLNAENE KDSRRRQARL QKELAEAAKE PLPVEQDDDI EVIVDETS DH
 TEETSPVRAI SRAATKRLSQ PAGGLLDSIT NIFGRRSVSS FPVPQDNVDT
 HPGSGKEVRV PATALCVFDA HDGEVNAVQF SPGSRLATG GMDRRVKLWE
 VFGEKCEFKG SLSGSNAGIT SIEFDSAGSY LLAASNDFAS RIWTVDDYRL
 RHTLTGHSGK VLSAKFLLDN ARIVSGSHDR TLKLWDLRSK VCIKTVFAGS
 SCNDIVCTEQ CVMGSHFDKK IRFWDIRSES IVREMELLGK ITALDLNPER
 TELLSCSRDD LLKVIDLRTN AIKQTF SAPG FKCGSDWTRV VFSPDGSYVA
 AGSAEGSLYI WSVLTGKVEK VLSKQHSSSI NAWAWSPSGS HVVSVDKGCK
 AVLWAQY

[IDENTIFICATION]

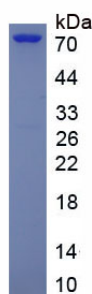


Figure. SDS-PAGE

[IMPORTANT NOTE]

The kit is designed for research use only, we will not be responsible for any issue if the kit was used in clinical diagnostic or any other procedures.