

**RPB343Hu01 10µg**

**Recombinant Bcl2 Associated X Protein (Bax)**

**Organism Species: *Homo sapiens (Human)***

***Instruction manual***

FOR RESEARCH USE ONLY

NOT FOR USE IN CLINICAL DIAGNOSTIC PROCEDURES

---

13th Edition (Revised in Aug, 2023)

**[ PROPERTIES ]**

**Source:** Prokaryotic expression

**Host:** *E.coli*

**Residues:** Met1~Gln171

**Tags:** N-terminal His Tag

**Subcellular Location:** Mitochondrion, Cytoplasm

**Purity:** > 90%

**Traits:** Freeze-dried powder

**Buffer formulation:** 20mM Tris, 150mM NaCl, pH8.0, containing 0.01% skl, 5%Trehalose.

**Original Concentration:** 50µg/mL

**Applications:** Positive Control; Immunogen; SDS-PAGE; WB.

(May be suitable for use in other assays to be determined by the end user.)

**Predicted isoelectric point:** 4.6

**Predicted Molecular Mass:** 22.7kDa

**Accurate Molecular Mass:** 25kDa as determined by SDS-PAGE reducing conditions.

**[ USAGE ]**

Reconstitute in ddH<sub>2</sub>O to a concentration of 0.1-0.5 mg/mL. Do not vortex.

**[ STORAGE AND STABILITY ]**

**Storage:** Avoid repeated freeze/thaw cycles.

Store at 2-8°C for one month.

Aliquot and store at -80°C for 12 months.

**Stability Test:** The thermal stability is described by the loss rate. The loss rate was determined by accelerated thermal degradation test, that is, incubate the protein at 37°C for 48h, and no obvious degradation and precipitation were observed. The loss rate is less than 5% within the expiration date under appropriate storage condition.

**[ SEQUENCE ]**

MDGSGEQPRG GGPTSSEQIM KTGALLLQGF IQDRAGRMGG EAPELALDPV  
 PQDASTKKLS ECLKRIGDEL DSNMELQRFI AAVDTDSPRE VFFRVAADMF  
 SDGNFNWGRV VALFYFASKL VLKALCTKVP ELIRTIMGWT LDFLRERLLG  
 WIQDQGGWDG LLSYFGTPTW Q

**[ IDENTIFICATION ]**

GA OGGGTC OGGGGAGCAGCCAGAGCCGGGGGGCCCA CCA GCTCTGAGCAGATCATGAAGACAGGGGCCCTTTTGCTTCAGGGTTTCATCCAGGATCGAGCAGGGCCGAA TGGGGGGGGAGGCAOC OGAGCTGGCCCTGGA OCGGTGCTCA GGATGCGTCCAC CA  
 D G S G E Q P R G G G P T S S E Q I M K T G A L L L Q G F I Q D R A G R M G G E A P E L A L D P V P Q D A S T K

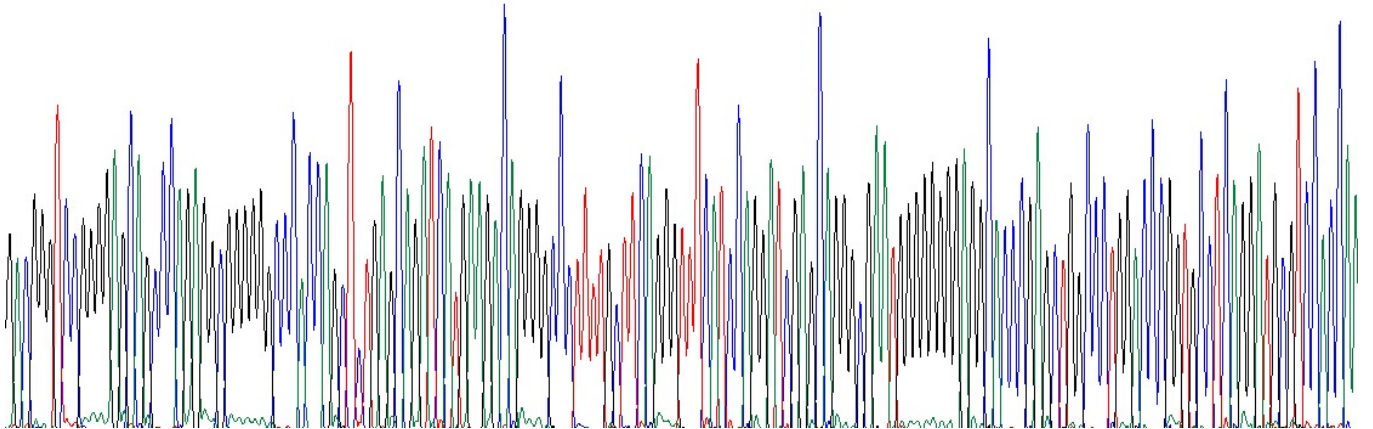


Figure. Gene Sequencing (Extract)

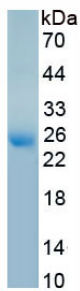


Figure. SDS-PAGE

**[ IMPORTANT NOTE ]**

The kit is designed for research use only, we will not be responsible for any issue if the kit was used in clinical diagnostic or any other procedures.