

RPC186Hu02 100µg

Recombinant C-Met (MET)

Organism Species: *Homo sapiens (Human)*

Instruction manual

FOR RESEARCH USE ONLY

NOT FOR USE IN CLINICAL DIAGNOSTIC PROCEDURES

12th Edition (Revised in Aug, 2016)

[PROPERTIES]

Source: Prokaryotic expression

Host: *E.coli*

Residues: Asn399~Cys709

Tags: N-terminal His Tag

Subcellular Location: Membrane, Secreted

Purity: > 80%

Traits: Freeze-dried powder

Buffer formulation: 20mM Tris, 150mM NaCl, pH8.0, containing 0.01% SKL, 5% Trehalose.

Original Concentration: 200µg/mL

Applications: Positive Control; Immunogen; SDS-PAGE; WB.

(May be suitable for use in other assays to be determined by the end user.)

Predicted isoelectric point: 8.5

Predicted Molecular Mass: 37.8kDa

Accurate Molecular Mass: 38kDa as determined by SDS-PAGE reducing conditions.

[USAGE]

Reconstitute in 20mM Tris, 150mM NaCl (pH8.0) to a concentration of 0.1-1.0 mg/mL. Do not vortex.

[STORAGE AND STABILITY]

Storage: Avoid repeated freeze/thaw cycles.

Store at 2-8°C for one month.

Aliquot and store at -80°C for 12 months.

Stability Test: The thermal stability is described by the loss rate. The loss rate was determined by accelerated thermal degradation test, that is, incubate the protein at 37°C for 48h, and no obvious degradation and precipitation were observed. The loss rate is less than 5% within the expiration date under appropriate storage condition.

[SEQUENCE]

NR
TLLRNSSGCE ARRDEYRTEF TTALQRVDLF MGQFSEVLLT SISTFIKGDL
TIANLGTSEG RFMQVVVSRG GPSTPHVNFL LDHPVSPEV IVEHTLNQNG
YTLVITGKKI TKIPLNGLGC RHFQSCSQCL SAPPFVQCGW CHDKCVRSEE
CLSGTWTQQI CLPAIYKVFP NSAPLEGGTR LTICGWDFGF RRNNKFDLKK
TRVLLGNESC TLTLSESTMN TLKCTVGPAM NKHFNMSIII SNGHGTTQYS
TFSYVDPVIT SISPKYGPMA GGTLLTLTGN YLNSGNSRHI SIGGKTCTLK
SVSNSILEC

[IDENTIFICATION]

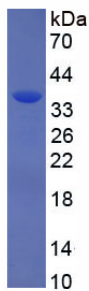


Figure. SDS-PAGE

[IMPORTANT NOTE]

The kit is designed for research use only, we will not be responsible for any issue if the kit was used in clinical diagnostic or any other procedures.