

RPB614Hu01 50µg

Recombinant C-Type Lectin Domain Family 4, Member L (CLEC4L)

Organism Species: *Homo sapiens (Human)*

Instruction manual

FOR RESEARCH USE ONLY

NOT FOR USE IN CLINICAL DIAGNOSTIC PROCEDURES

12th Edition (Revised in Aug, 2016)

[PROPERTIES]

Source: Prokaryotic expression

Host: *E.coli*

Residues: Glu70~Ala404

Tags: N-terminal His Tag

Subcellular Location: Membrane

Purity: > 90%

Traits: Freeze-dried powder

Buffer formulation: 100mMNaHCO₃, 500mMNaCl, pH8.3, containing 1mM DTT, 0.01% SKL, 5% Trehalose.

Original Concentration: 200µg/mL

Applications: Positive Control; Immunogen; SDS-PAGE; WB.

(May be suitable for use in other assays to be determined by the end user.)

Predicted isoelectric point: 5.2

Predicted Molecular Mass: 42.0kDa

Accurate Molecular Mass: 42kDa as determined by SDS-PAGE reducing conditions.

[USAGE]

Reconstitute in 100mM NaHCO₃, 500mM NaCl (pH8.3) to a concentration of 0.1-1.0 mg/mL. Do not vortex.

[STORAGE AND STABILITY]

Storage: Avoid repeated freeze/thaw cycles.

Store at 2-8°C for one month.

Aliquot and store at -80°C for 12 months.

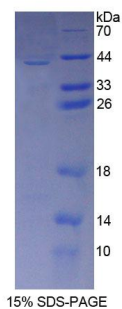
Stability Test: The thermal stability is described by the loss rate. The loss rate was determined by accelerated thermal degradation test, that is, incubate the protein at 37°C for 48h, and no obvious degradation and precipitation were observed. The loss rate is less than 5% within the expiration date under appropriate storage condition.

[**SEQUENCE**]

```

          E QSRQDAIYQN LTQLKAAVGE LSEKSKLQEI
YQELTQLKAA VGELPEKSKL QEIQELTRL KAAVGELPEK SKLQEIQEL
TWLKAAVGEL PEKSKMQEIY QELTRLKAAV GELPEKSKQQ EIYQELTRLK
AAVGELPEKS KQQEIYQELT RLKAAVGELP ESKKQQEIYQ ELTQLKAAVE
RLCHPCPWEW TFFQGNCYFM SNSQRNWHDS ITACKEVGAQ LVVIKSAAEQ
NFLQLQSSRS NRFTWMGLSD LNQEGTWQWV DGSPLLPSFK QYWNRGEPNN
VGEEDCAEFS GNGWNDDKCN LAKFWICKKS AASCSRDEEQ FLSPAPATPN
PPPA
  
```

[**IDENTIFICATION**]



[**IMPORTANT NOTE**]

The kit is designed for research use only, we will not be responsible for any issue if the kit was used in clinical diagnostic or any other procedures.