

RPD331Hu01 10µg

Recombinant Calcium/Calmodulin Dependent Protein Kinase II Alpha (CAMK2a)

Organism Species: *Homo sapiens (Human)*

Instruction manual

FOR RESEARCH USE ONLY

NOT FOR USE IN CLINICAL DIAGNOSTIC PROCEDURES

13th Edition (Revised in Aug, 2023)

[PROPERTIES]

Source: Prokaryotic expression

Host: *E.coli*

Residues: Met1~His478

Tags: N-terminal His Tag

Subcellular Location: Secreted

Purity: > 90%

Traits: Freeze-dried powder

Buffer formulation: PBS, pH7.4, containing 0.01% SKL, 5% Trehalose .

Original Concentration: 50µg/mL

Applications: Positive Control; Immunogen; SDS-PAGE; WB.

(May be suitable for use in other assays to be determined by the end user.)

Predicted isoelectric point: 7.1

Predicted Molecular Mass: 57.8kDa

Accurate Molecular Mass: 58kDa as determined by SDS-PAGE reducing conditions.

[USAGE]

Reconstitute in ddH₂O to a concentration of 0.1-0.5 mg/mL. Do not vortex.

[STORAGE AND STABILITY]

Storage: Avoid repeated freeze/thaw cycles.

Store at 2-8°C for one month.

Aliquot and store at -80°C for 12 months.

Stability Test: The thermal stability is described by the loss rate. The loss rate was determined by accelerated thermal degradation test, that is, incubate the protein at 37°C for 48h, and no obvious degradation and precipitation were observed. The loss rate is less than 5% within the expiration date under appropriate storage condition.

[SEQUENCE]

```

MATITCTRFT EEYQLFEELG KGAFSVVRRG VKVLAGQEYA AKIINTKKLS
ARDHQKLERE ARICRLLKHP NIVRLHDSIS EEGHHYLIFD LVTGGELFED
IVAREYYSEA DASHCIQQIL EAVLHCHQMG VVHRDLKPEN LLLASKLKGA
AVKLADFGLA IEVEGEQQAW FGFAGTPGYL SPEVLRKDPY GKPVDLWACG
VILYILLVGY PPFWDEDQHR LYQIQIKAGAY DFPSPWDTV TPEAKDLINK
MLTINPSKRI TAAEALKHPW ISHRSTVASC MHRQETVDCL KKFNARRKLLK
GAILTTMLAT RNFSGGKSGG NKKSDGVKES SESTNTTIED EDTKVRKQEI
IKVTEQLIEA ISNGDFESYT KMCDPGMTAF EPEALGNLVE GLDFHRFYFE
NLWSRNSKPV HTTILNPHIH LMGDESACIA YIRITQYLDA GGIPRTAQSE
ETRVWHRRDG KWQIVHFHRS GAPSVLPH
    
```

[IDENTIFICATION]

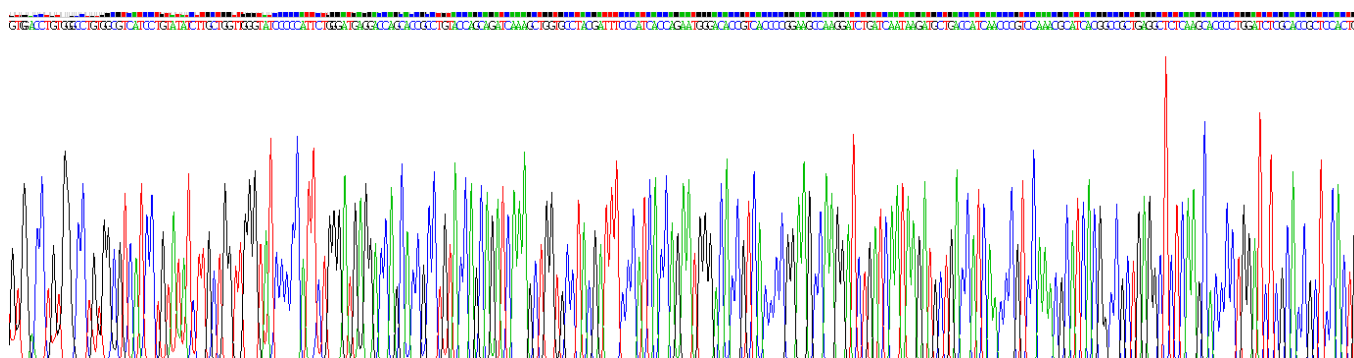


Figure . Gene Sequencing (extract)

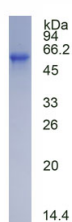


Figure. SDS-PAGE

[IMPORTANT NOTE]

The kit is designed for research use only, we will not be responsible for any issue if the kit was used in clinical diagnostic or any other procedures.