

RPL307Hu01 50µg

Recombinant Cat Eye Syndrome Chromosome Region, Candidate 1 (CECR1)

Organism Species: *Homo sapiens (Human)*

Instruction manual

FOR RESEARCH USE ONLY

NOT FOR USE IN CLINICAL DIAGNOSTIC PROCEDURES

13th Edition (Revised in Aug, 2023)

[PROPERTIES]

Source: Prokaryotic expression

Host: *E.coli*

Residues: Ile30~Lys511

Tags: N-terminal His Tag

Subcellular Location: Secreted

Purity: > 95%

Traits: Freeze-dried powder

Buffer formulation: 20mM Tris, 150mM NaCl, pH8.0, containing 0.01% Sarcosyl, 5%Trehalose.

Original Concentration: 200µg/mL

Applications: Positive Control; Immunogen; SDS-PAGE; WB.

(May be suitable for use in other assays to be determined by the end user.)

Predicted isoelectric point: 8.2

Predicted Molecular Mass: 59.6kDa

Accurate Molecular Mass: 60kDa as determined by SDS-PAGE reducing conditions.

[USAGE]

Reconstitute in 20mM Tris, 150mM NaCl (pH8.0) to a concentration of 0.1-1.0 mg/mL. Do not vortex.

[STORAGE AND STABILITY]

Storage: Avoid repeated freeze/thaw cycles.

Store at 2-8°C for one month.

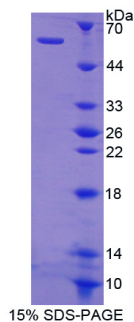
Aliquot and store at -80°C for 12 months.

Stability Test: The thermal stability is described by the loss rate. The loss rate was determined by accelerated thermal degradation test, that is, incubate the protein at 37°C for 48h, and no obvious degradation and precipitation were observed. The loss rate is less than 5% within the expiration date under appropriate storage condition.

[SEQUENCE]

			I	DETRAHLLLK	EKMRLGGRL
VLNTKEELAN	ERLMTLKIAE	MKEAMRTLIF	PPSMHFFQAK	HLIERSQVFN	
ILRMMPKGAA	LHLHDIGIVT	MDWLVRNVTY	RPHCHICFTP	RGIMQFRFAH	
PTPRPSEKCS	KWILLEDYRK	RVQNVTEFDD	SLLRNFTLVT	QHPEVIYTNQ	
NVVWSKFETI	FFTISGLIHY	APVFRDYVFR	SMQEFYEDNV	LYMEIRARLL	
PVYELSGEHH	DEEWSVKTYQ	EVAQKFVETH	PEFIGIKIY	SDHRSKDVAV	
IAESIRMAMG	LRIKFPTVVA	GFDLVGHEDT	GHSLHDYKEA	LMIPAKDGVK	
LPYFFHAGET	DWQGTSIDRN	ILDALMLNTT	RIGHGFALSK	HPAVRTYSWK	
KDIPIEVCPI	SNQVLKLVS	LRNHPVATLM	ATGHPMVISS	DDPAMFGAKG	
LSYDFYEVFM	GIGGMKADLR	TLKQLAMNSI	KYSTLLESEK	NTFMEIWKKR	
WDKFIADVAT	K				

[IDENTIFICATION]



[IMPORTANT NOTE]

The kit is designed for research use only, we will not be responsible for any issue if the kit was used in clinical diagnostic or any other procedures.