

**RPB834Ra01 100µg**  
**Recombinant Coagulation Factor XI (F11)**  
**Organism Species: Rattus norvegicus (Rat)**  
***Instruction manual***

FOR IN VITRO USE AND RESEARCH USE ONLY  
NOT FOR USE IN CLINICAL DIAGNOSTIC PROCEDURES

9th Edition (Revised in Jul, 2013)

## **[ PROPERTIES ]**

**Residues:** Ile275~Gly516 (Accession # Q6TUF8),  
with two N-terminal Tags, His-tag and GST-tag.

**Host:** *E. coli*

**Purity:** >95%

**Endotoxin Level:** <1.0EU per 1µg  
(determined by the LAL method).

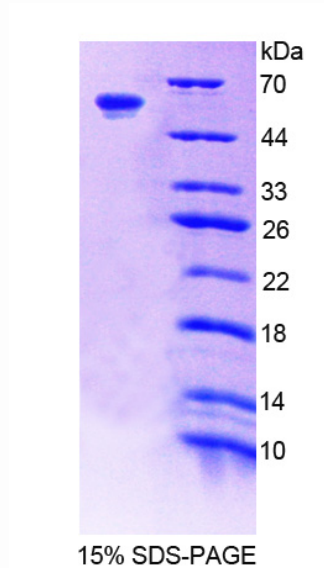
**Formulation:** Supplied as lyophilized form in PBS,  
pH7.4, containing 5% trehalose, 0.01% sarcosyl.

**Predicted isoelectric point:** 6.5

**Predicted Molecular Mass:** 59.6kDa

**Applications:** SDS-PAGE; WB; ELISA; IP.

(May be suitable for use in other assays to be determined by the end user.)



## **[ USAGE ]**

Reconstitute in sterile PBS, pH7.2-pH7.4.

## **[ STORAGE AND STABILITY ]**

**Storage: Avoid repeated freeze/thaw cycles.**

Store at 2-8°C for one month.

Aliquot and store at -80°C for 12 months.

**Stability Test:** The thermal stability is described by the loss rate of the target protein. The loss rate was determined by accelerated thermal degradation test, that is, incubate the protein at 37°C for 48h, and no obvious degradation and precipitation were observed. (Referring from China Biological Products Standard, which was calculated by the Arrhenius equation.) The loss of this protein is less than 5% within the expiration date under appropriate storage condition.

## **[ SEQUENCES ]**

The target protein is fused with two N-terminal Tags, His-tag and GST-tag, its sequence is listed below.

MSPILGYWKI KGLVQPTRLLEYLEEKYEE HLYERDEGDK WRNKKFELGL EFPNLPPYYID  
GDVKLTQSMA IIRYIADKHN MLGGCPKERA EISMLEGAVL DIRYGVSRIA YSKDFETLKV  
DFLSKLPEML KMFEDRLCHK TYLNGDHVTH PDFMLYDALD VVLYMDPMCL DAFPKLVCFK  
KRIEAIQID KYLKSSKYIA WPLQGWQATF GGGDHPPKSD GSTSGSGHHH HHHSAGLVPR  
GSTAIGMKET AAKFERQHM DSPDLGTGGG SGIEGRGSMG YRGSEF-IPVFCH  
PNFYNDTDFL GEELDIVDVK GKESCQKMCS DNVRCQFFTY YPSRGSCSER  
NMHNQNQAQG VRRSCVCSRR VAMAGDPAHH PGTPVWRLHH WKPVDIDSGS  
LFLWVSINDI RLGSSSPSTE TPKTLRVYGG IVNQSEINED TTFFRVQEMI IHDQYTSAES  
GFDIALLEKLE PAMNYTDEVQ STLQKAKVPL VSNEECQTRY RKHKITNKVI CAGYKEGGKD  
TCKGDSGGPL SCKHNG