

**RPD194Hu01 50µg**

**Recombinant Collagen Type II Alpha 1 (COL2a1)**

**Organism Species: *Homo sapiens (Human)***

***Instruction manual***

FOR RESEARCH USE ONLY

NOT FOR USE IN CLINICAL DIAGNOSTIC PROCEDURES

---

13th Edition (Revised in Aug, 2023)

**[ PROPERTIES ]**

**Source:** Prokaryotic expression

**Host:** *E.coli*

**Residues:** Ser1386~Pro1467

**Tags:** N-terminal His Tag

**Subcellular Location:** Secreted, Extracellular matrix

**Purity:** > 97%

**Traits:** Freeze-dried powder

**Buffer formulation:** 20mM Tris, 150mM NaCl, pH8.0, containing 0.01% SKL, 5% Trehalose.

**Original Concentration:** 200µg/mL

**Applications:** Positive Control; Immunogen; SDS-PAGE; WB.

(May be suitable for use in other assays to be determined by the end user.)

**Predicted isoelectric point:** 9.0

**Predicted Molecular Mass:** 10.4kDa

**Accurate Molecular Mass:** 13kDa as determined by SDS-PAGE reducing conditions.

**[ USAGE ]**

Reconstitute in 20mM Tris, 150mM NaCl (pH8.0) to a concentration of 0.1-1.0 mg/mL. Do not vortex.

**[ STORAGE AND STABILITY ]**

**Storage:** Avoid repeated freeze/thaw cycles.

Store at 2-8°C for one month.

Aliquot and store at -80°C for 12 months.

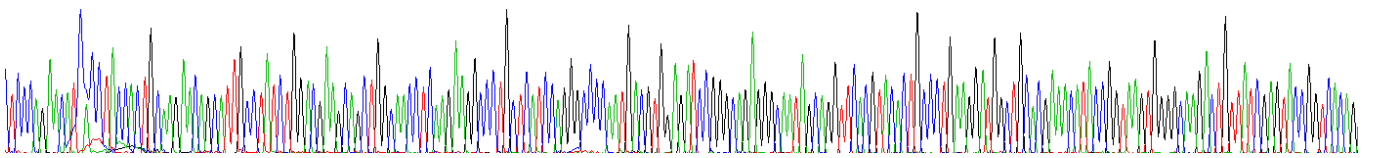
**Stability Test:** The thermal stability is described by the loss rate. The loss rate was determined by accelerated thermal degradation test, that is, incubate the protein at 37°C for 48h, and no obvious degradation and precipitation were observed. The loss rate is less than 5% within the expiration date under appropriate storage condition.

**[ SEQUENCE ]**

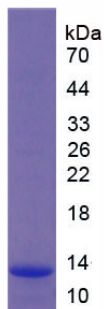
SQKIT YHCKNSIAYL  
DEAAGNLKKA LLIQGSNDVE IRAEGNSRFT YTALKDGGCTK HTGKKGKTVI  
EYRSQKTSRL PIIDIAP

**[ IDENTIFICATION ]**

TTCCAGACATCTCCACTTCCAGACAGCATTGGCTATCTGGACGAGGAGCTGGCCAGCTCAAGAGGCTCTCATTCCAGGGGCCCCAATGACGCGAGATCCGGCCAGAGGCAATAGCAGGCTCACGTACACTCCCTCGAGGATGCTTGCAGAAACATACCGGTATGTGGCCAGACTGTTATCGAGTACCGGTCACG  
S Q N I T Y H C K N S I A Y L D E A A G N L K K A L L I Q G S N D V E I R A E G N S R F T Y T A L K D G C T K H T G K W G K T V I E Y R S Q :



**Figure. Gene Sequencing (Extract)**



**Figure. SDS-PAGE**

**[ IMPORTANT NOTE ]**

The kit is designed for research use only, we will not be responsible for any issue if the kit was used in clinical diagnostic or any other procedures.