

**RPA758Hu01 100µg**

**Recombinant Complement C3 Convertase (C3 Convertase)**

**Organism Species: *Homo sapiens (Human)***

***Instruction manual***

**FOR RESEARCH USE ONLY**

**NOT FOR USE IN CLINICAL DIAGNOSTIC PROCEDURES**

---

12th Edition (Revised in Aug, 2016)

## **[ PROPERTIES ]**

**Source:** Prokaryotic expression

**Host:** *E.coli*

**Residues:** Glu1322~Cys1661

**Tags:** N-terminal His Tag

**Subcellular Location:** Secreted

**Purity:** > 90%

**Traits:** Freeze-dried powder

**Buffer formulation:** PBS, pH7.4, containing 0.01% SKL, 5% Trehalose.

**Original Concentration:** 200µg/mL

**Applications:** Positive Control; Immunogen; SDS-PAGE; WB.

(May be suitable for use in other assays to be determined by the end user.)

**Predicted isoelectric point:** 4.9

**Predicted Molecular Mass:** 45.9kDa

**Accurate Molecular Mass:** 46kDa as determined by SDS-PAGE reducing conditions.

## **[ USAGE ]**

Reconstitute in PBS (pH7.4) to a concentration of 0.1-1.0 mg/mL. Do not vortex.

## **[ STORAGE AND STABILITY ]**

**Storage:** Avoid repeated freeze/thaw cycles.

Store at 2-8°C for one month.

Aliquot and store at -80°C for 12 months.

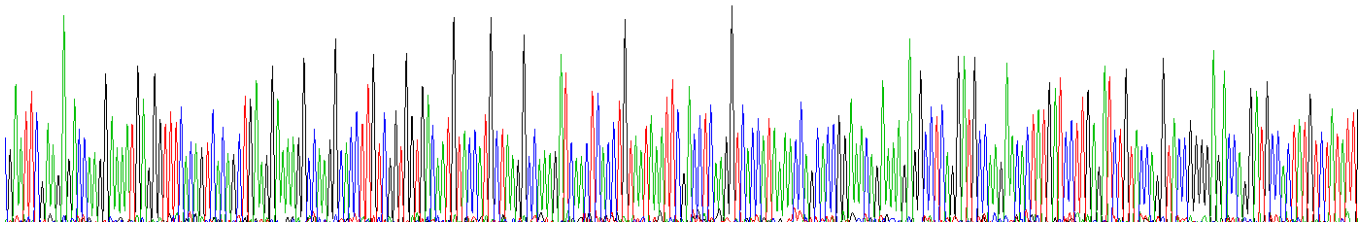
**Stability Test:** The thermal stability is described by the loss rate. The loss rate was determined by accelerated thermal degradation test, that is, incubate the protein at 37°C for 48h, and no obvious degradation and precipitation were observed. The loss rate is less than 5% within the expiration date under appropriate storage condition.

## **[ SEQUENCE ]**

|            |            |            |            |             |
|------------|------------|------------|------------|-------------|
|            |            | EETKENEGF  | TVTAEGKGQG | TLSVVVTMYHA |
| KAKDQLTCNK | FDLKVTIKPA | PETEKRPQDA | KNTMILEICT | RYRGDQDATM  |
| SILDISMMTG | FAPDTDDLKQ | LANGVDRYIS | KYELDKAFSD | RNTLIIYLDK  |
| VSHSEDDCLA | FKVHQYFNVE | LIQPGAVKVY | AYYNLEESCT | RFYHPEKEDG  |
| KLNLKCRDEL | CRCAEENCFI | QKSDDKVTLE | ERLDKACEPG | VDYVYKTRLV  |
| KVQLSNDFDE | YIMAIETIK  | SGSDEVQVGQ | QRTFISPIKC | REALKLEKK   |
| HYLMWGLSSD | FWGEKPNLSY | IIGKDTWEH  | WPEEDECQDE | ENQKQCQDLG  |
| AFTESMVVFG | C          |            |            |             |

**[ IDENTIFICATION ]**

**Genomic coordinates:** chr10:168,790,000-168,790,000



### Figure . Gene Sequencing (extract)

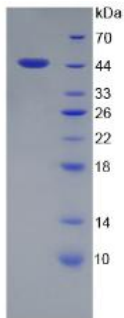


Figure. SDS-PAGE

**[ IMPORTANT NOTE ]**

The kit is designed for research use only, we will not be responsible for any issue if the kit was used in clinical diagnostic or any other procedures.