

**RPA861Mu01 200µg**  
**Recombinant Complement Component 3 (C3)**  
**Organism Species: *Mus musculus* (Mouse)**  
***Instruction manual***

FOR RESEARCH USE ONLY  
NOT FOR USE IN CLINICAL DIAGNOSTIC PROCEDURES

---

13th Edition (Revised in Aug, 2023)

**[ PROPERTIES ]**

**Source:** Prokaryotic expression

**Host:** *E.coli*

**Residues:** Ala965~Arg1303

**Tags:** N-terminal His Tag

**Subcellular Location:** Secreted

**Purity:** > 90%

**Traits:** Freeze-dried powder

**Buffer formulation:** 100mMNaHCO<sub>3</sub>, 500mMNaCl, pH8.3, containing 0.01% SKL, 5% Trehalose.

**Original Concentration:** 300µg/mL

**Applications:** Positive Control; Immunogen; SDS-PAGE; WB.

(May be suitable for use in other assays to be determined by the end user.)

**Predicted isoelectric point:** 5.9

**Predicted Molecular Mass:** 41.6kDa

**Accurate Molecular Mass:** 42kDa as determined by SDS-PAGE reducing conditions.

**[ USAGE ]**

Reconstitute in ddH<sub>2</sub>O to a concentration of 0.1-1.0 mg/mL. Do not vortex.

**[ STORAGE AND STABILITY ]**

**Storage:** Avoid repeated freeze/thaw cycles.

Store at 2-8°C for one month.

Aliquot and store at -80°C for 12 months.

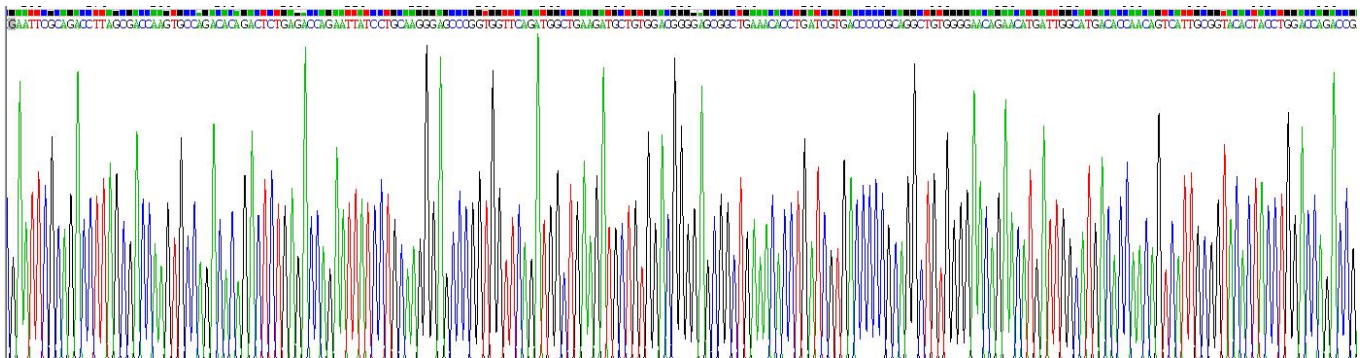
**Stability Test:** The thermal stability is described by the loss rate. The loss rate was determined by accelerated thermal degradation test, that is, incubate the protein at 37°C for 48h, and no obvious degradation and precipitation were observed. The loss rate is less than 5% within the expiration date under appropriate storage condition.

**[ SEQUENCE ]**

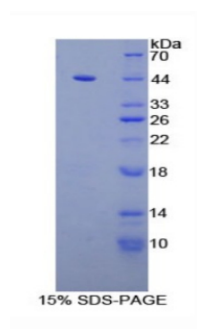
```

ADLSDQ VPDTDSETRI ILQGSPVVQM AEDAVIDGERL
KHLIVTPAGC GEQNMIGMTP TVIAVHYLDQ TEQWEKFGIE KRQEALELIK
KGYTQQLAFK QPSSAYAAFN NRPPSTWLTA YVVKVFLAA NLIAIDSHVL
CGAVKWLILE KQKPDGVFQE DGPVIHQEMI GGFRNAKEAD VSLTAFVLIA
LQEARDICEG QVNSLPGSIN KAGEYIEASY MNLQRPYTVA IAGYALALMN
KLEEPYLGKF LNTAKDRNRW EEPDQQLYNV EATSYALLAL LLLKDFDSVP
PVVRWLNEQR YYGGGYGSTQ ATFMVFQALA QYQTDVDPHK DLNMDVSFHL
PSR
    
```

**[ IDENTIFICATION ]**



**Figure . Gene Sequencing (extract)**



**[ IMPORTANT NOTE ]**

The kit is designed for research use only, we will not be responsible for any issue if the kit was used in clinical diagnostic or any other procedures.