

**RPA888Ra01 50µg**

**Recombinant Complement Component 4 (C4)**

**Organism Species: *Rattus norvegicus* (Rat)**

***Instruction manual***

**FOR RESEARCH USE ONLY**

**NOT FOR USE IN CLINICAL DIAGNOSTIC PROCEDURES**

---

13th Edition (Revised in Aug, 2023)

## **[ PROPERTIES ]**

**Source:** Prokaryotic expression

**Host:** *E.coli*

**Residues:** Pro1419~Val1737

**Tags:** N-terminal His Tag

**Subcellular Location:** Secreted

**Purity:** > 80%

**Traits:** Freeze-dried powder

**Buffer formulation:** PBS, pH7.4, containing 0.01% SKL, 5% Trehalose.

**Original Concentration:** 400µg/mL

**Applications:** Positive Control; Immunogen; SDS-PAGE; WB.

(May be suitable for use in other assays to be determined by the end user.)

**Predicted isoelectric point:** 8.1

**Predicted Molecular Mass:** 39.7kDa

**Accurate Molecular Mass:** 40kDa as determined by SDS-PAGE reducing conditions.

## **[ USAGE ]**

Reconstitute in 10mM PBS (pH7.4) to a concentration of 0.1-1.0 mg/mL. Do not vortex.

## **[ STORAGE AND STABILITY ]**

**Storage:** Avoid repeated freeze/thaw cycles.

Store at 2-8°C for one month.

Aliquot and store at -80°C for 12 months.

**Stability Test:** The thermal stability is described by the loss rate. The loss rate was determined by accelerated thermal degradation test, that is, incubate the protein at 37°C for 48h, and no obvious degradation and precipitation were observed. The loss rate is less than 5% within the expiration date under appropriate storage condition.

## **[ SEQUENCE ]**

PA ADDPSVHSQP VTPLQLFEGR RSRRRREAPK AADEQESRVQ YTVCIWRNGN LGLSGMAIAD  
 ITLLSGFQAL RADLEKLTSL SDRYVSHFET DGPHVLLYFD SVPTTRECVG FGALQEVAVG LVQPASAVLY  
 DYSPDHKCS VFYAAPT KSK LLSTLCSADV CQCAEGKCPR QRRSLERGVE DKDGYRMKFA CYYPRVEYGF  
 QVKVLREDSR AAFRLFETKI TQVLHFTKDA KASIGQTRNF LVRASCRLRL EPSKEYLING MDGVTSDLKG  
 DPQYLLDSNT WIEEMP SERL CRSTRQRAAC GQLNDFLQEY SSQGCQV

## [ IDENTIFICATION ]

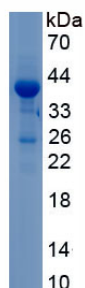


Figure. SDS-PAGE

## [ IMPORTANT NOTE ]

The kit is designed for research use only, we will not be responsible for any issue if the kit was used in clinical diagnostic or any other procedures.