

**RPA699Hu03 50µg**

**Recombinant Cyclooxygenase-2 (COX 2)**

**Organism Species: *Homo sapiens (Human)***

***Instruction manual***

**FOR RESEARCH USE ONLY**

**NOT FOR USE IN CLINICAL DIAGNOSTIC PROCEDURES**

---

13th Edition (Revised in Aug, 2023)

## **[ PROPERTIES ]**

**Source:** Prokaryotic expression

**Host:** *E.coli*

**Residues:** Asn19~Asp589

**Tags:** N-terminal His Tag

**Subcellular Location:** Membrane, Nucleus, Endoplasmic reticulum lumen

**Purity:** > 90%

**Traits:** Freeze-dried powder

**Buffer formulation:** PBS, pH7.4, containing 0.01% Sarcosyl, 5% Trehalose.

**Original Concentration:** 200µg/mL

**Applications:** Positive Control; Immunogen; SDS-PAGE; WB.

(May be suitable for use in other assays to be determined by the end user.)

**Predicted isoelectric point:** 7.4

**Predicted Molecular Mass:** 69.1kDa

**Accurate Molecular Mass:** 67kDa as determined by SDS-PAGE reducing conditions.

## **[ USAGE ]**

Reconstitute in 10mM PBS (pH7.4) to a concentration of 0.1-1.0 mg/mL. Do not vortex.

## **[ STORAGE AND STABILITY ]**

**Storage:** Avoid repeated freeze/thaw cycles.

Store at 2-8°C for one month.

Aliquot and store at -80°C for 12 months.

**Stability Test:** The thermal stability is described by the loss rate. The loss rate was determined by accelerated thermal degradation test, that is, incubate the protein at 37°C for 48h, and no obvious degradation and precipitation were observed. The loss rate is less than 5% within the expiration date under appropriate storage condition.

## **[ SEQUENCE ]**

NP CSHPCQNRG VCMSVGFDQY KCDCTRTGFY  
 GENCSTPEFL TRIKLFKPT PNTVHYILTH FKGFVN VNN IPFLRNAIMS  
 YVLT SRSHLI DSPPTYNADY GYKSWEAFSN LSYYTRALPP VPDDCPTPLG  
 VKGKKQLPDS NEIVEKLLLR RKFIPDPQGS NMMFAFFAQH FTHQFFKTDH  
 KRGPFTNGL GHGVDLNHIY GETLARQRKL RLFKDGKMKY QIIDGEMYPP  
 TVKDTQAEMI YPPQVPEHLR FAVGQEVFGL VPGLMMYATI WLREHNRVCD  
 VLKQEHPEWG DEQLFQTSRL ILIGETIKIV IEDYVQHLSG YHFKLKFDPE  
 LLFNKQFQYQ NRIAAEFNTL YHWHPLL PDT FQIHDQKYN Y QQFIYNN SIL  
 LEHGITQFVE SFTRQIAGRV AGGRNVPPAV QKVSQASIDQ SRQMKYQSFN  
 EYRKRFMLKP YESFEELTGE KEMSAELEAL YGDIDAVELY PALLVEKPRP  
 DAIFGETMVE VGAPFSLKGL MGNVICSPAY WKPSTFGGEV GFQIINTASI  
 QSLICNNVKG CPFTSFSVPD PELIKTVTIN ASSSRSGLD

## [ IDENTIFICATION ]

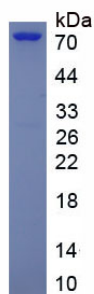


Figure. SDS-PAGE

## [ IMPORTANT NOTE ]

The kit is designed for research use only, we will not be responsible for any issue if the kit was used in clinical diagnostic or any other procedures.