

**RPB053Hu01 50µg**  
**Recombinant Cytochrome P450 7A1 (CYP7A1)**  
**Organism Species: *Homo sapiens (Human)***  
***Instruction manual***

FOR RESEARCH USE ONLY  
NOT FOR USE IN CLINICAL DIAGNOSTIC PROCEDURES

---

12th Edition (Revised in Aug, 2016)

**[ PROPERTIES ]**

**Source:** Prokaryotic expression

**Host:** *E.coli*

**Residues:** Asn160~Lys418

**Tags:** N-terminal His Tag

**Subcellular Location:** Endoplasmic reticulum lumen

**Purity:** > 90%

**Traits:** Freeze-dried powder

**Buffer formulation:** PBS, pH7.4, containing 0.01% SKL, 5% Trehalose .

**Original Concentration:** 200µg/mL

**Applications:** Positive Control; Immunogen; SDS-PAGE; WB.

(May be suitable for use in other assays to be determined by the end user.)

**Predicted isoelectric point:** 6.2

**Predicted Molecular Mass:** 33.4kDa

**Accurate Molecular Mass:** 33/66kDa as determined by SDS-PAGE reducing conditions.

**[ USAGE ]**

Reconstitute in 10mM PBS (pH7.4) to a concentration of 0.1-1.0 mg/mL. Do not vortex.

**[ STORAGE AND STABILITY ]**

**Storage:** Avoid repeated freeze/thaw cycles.

Store at 2-8°C for one month.

Aliquot and store at -80°C for 12 months.

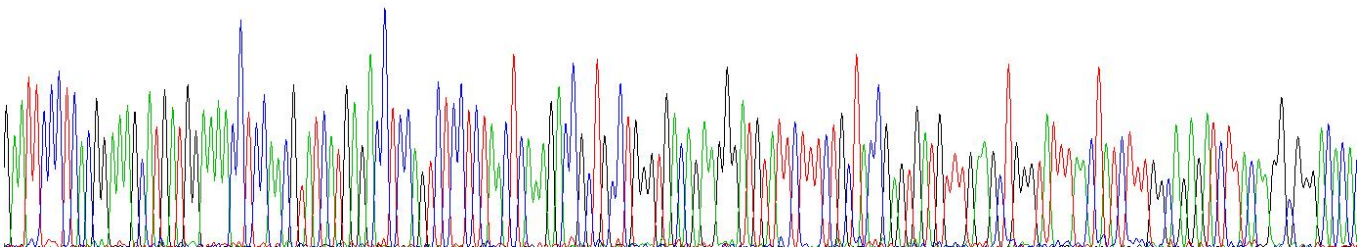
**Stability Test:** The thermal stability is described by the loss rate. The loss rate was determined by accelerated thermal degradation test, that is, incubate the protein at 37°C for 48h, and no obvious degradation and precipitation were observed. The loss rate is less than 5% within the expiration date under appropriate storage condition.

**[ SEQUENCE ]**

N SKTAAWTEG MYSFCYRVMF EAGYLTI FGR DLTRRDTQKA  
 HILNNLDNFK QFDKVF PALV AGLPIHMFRT AHNAREKLAE SLRHENLQKR  
 ESISELISLR MFLNDTLSTF DDLEKAKTHL VVLWASQANT IPATFWSLFQ  
 MIRNPEAMKA ATEEVKRTLE NAGQKVSLEG NPICLSQAEL NDLPVLD SII  
 KESLRLSSAS LNIRTAKEDF TLHLEDGSYN IRKDDIIALY PQLMHLDP EI  
 YPDPLTFKYD RYLDEN GK

**[ IDENTIFICATION ]**

BAATTCCCTCAOGGAAAGCATGATGGAAAACCTCAAACGTATCATGAGACCTCCAGTCTCCTCTAACTCAAAGACCCGCTGCCTGGGTGACAGAAAGGATGATTCTTTCTGCTACCGAGTGATGTTTGAAGCTGGGTATTTAACTATCTTTGGCAGAGATCTTACAAGCGGGACACAC



**Figure . Gene Sequencing (extract)**

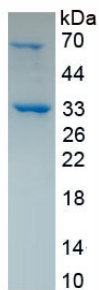


Figure. SDS-PAGE

**[ IMPORTANT NOTE ]**

The kit is designed for research use only, we will not be responsible for any issue if the kit was used in clinical diagnostic or any other procedures.