

RPA522Mu01 100ug

Recombinant Cytokeratin 14 (CK14)

Organism Species: *Mus musculus* (Mouse)

Instruction manual

FOR RESEARCH USE ONLY

NOT FOR USE IN CLINICAL DIAGNOSTIC PROCEDURES

12th Edition (Revised in Aug, 2016)

[PROPERTIES]

Source: Prokaryotic expression

Host: *E.coli*

Residues: Met1~Asn484

Tags: N-terminal His Tag

Subcellular Location: Nucleus, Cytoplasm

Purity: > 97%

Traits: Freeze-dried powder

Buffer formulation: 20mM Tris, 150mM NaCl, pH8.0, containing 0.01% skl, 5%Trehalose.

Original Concentration: 90µg/mL

Applications: Positive Control; Immunogen; SDS-PAGE; WB.

(May be suitable for use in other assays to be determined by the end user.)

Predicted isoelectric point: 5.1

Predicted Molecular Mass: 56.6kDa

Accurate Molecular Mass: 57kDa as determined by SDS-PAGE reducing conditions.

[USAGE]

Reconstitute in ddH₂O to a concentration of 0.1-1.0 mg/mL. Do not vortex.

[STORAGE AND STABILITY]

Storage: Avoid repeated freeze/thaw cycles.

Store at 2-8°C for one month.

Aliquot and store at -80°C for 12 months.

Stability Test: The thermal stability is described by the loss rate. The loss rate was determined by accelerated thermal degradation test, that is, incubate the protein at 37°C for 48h, and no obvious degradation and precipitation were observed. The loss rate is less than 5% within the expiration date under appropriate storage condition.

[SEQUENCE]

```

MATCSRQFTS SSSMKGSCGI GGGSSRMSSI LAGGSCRAPS TYGGMSVTSS
RFSSGGACGI GGGYGGSFSS SSFGGGLGSG FGGRFDFGFG GFGGGLGGGF
GGGLGGGLGG GIGDGLLVGS EKVTMQLNLD RLATYLDKVR ALEEANTELE
VKIRDWYQRQ RPTEIKDYSF YFKTIEDLKS KILAATVDNA NVLLQIDNAR
LAADDFRTKF ETEQSLRMSV EADINGLRRV LDELTLARAD LEMQIESLKE
ELAYLKKNHE EEMASMRQV GGDVNVEMDA APGVDLSRIL NEMRDQYEKM
AEKNRKDAEE WFFSKTEELN REVATNSELV QSGKSEISEL RRTMQLNLEIE
LQSQLSMKAS LENNLEETKG RYCMQLAQIQ EMIGSVEEQL AQLRCEMEQQ
NQEYKILLDV KTRLEQEIAT YRRLLEGEDA HLSSSQFSSS SQFSSGSQSS
RDVTSTNRQI RTKVMDVHDG KVVSTHEQVL RTKN
    
```

[IDENTIFICATION]

ATGGCACTGCAGCCGAGTTGACCTCTCCAGCTCCATGAAAGGGCTCTTGTGGTATGCGTGGTGGCTCTAAGCCGATGCTCGCATCTCGCTGGAGGATCTCGCGGGCTCCAGCACTAAGGGGGCACTGCGGTTACTCTCTCGCTCTCTCTCTCTGAGGGAGCTGTGGGATTGGAGGTGGCTATGGTGGGK
H A T C S R Q F T S S S S M K G S C G I G G G S S R M S S I L A G G S C R A P S T Y G G H S V T S S R F S S G G A C G I G G G Y G G S

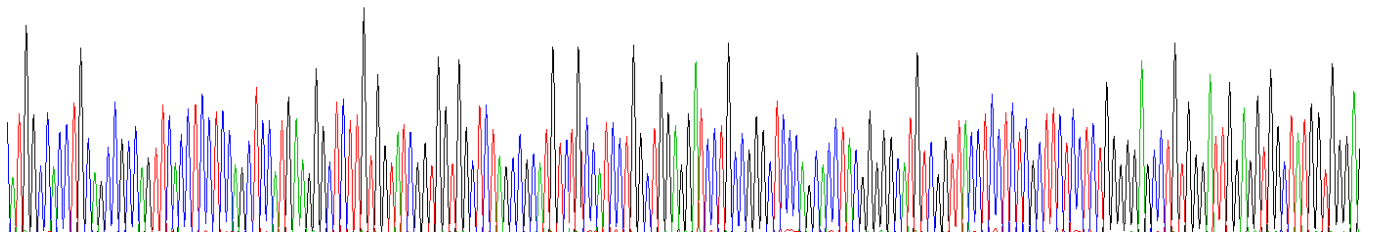
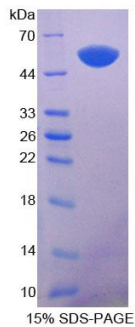


Figure. Gene Sequencing (Extract)



[IMPORTANT NOTE]

The kit is designed for research use only, we will not be responsible for any issue if the kit was used in clinical diagnostic or any other procedures.