

**RPQ577Hu01 5mg**

**Recombinant Cytoskeleton Associated Protein 4 (CKAP4)**

**Organism Species: *Homo sapiens (Human)***

***Instruction manual***

**FOR RESEARCH USE ONLY**

**NOT FOR USE IN CLINICAL DIAGNOSTIC PROCEDURES**

---

13th Edition (Revised in Aug, 2023)

## **[ PROPERTIES ]**

**Source:** Prokaryotic expression

**Host:** *E.coli*

**Residues:** His128~Val602

**Tags:** N-terminal His Tag

**Subcellular Location:** Membrane, Endoplasmic reticulum lumen

**Purity:** > 90%

**Traits:** Freeze-dried powder

**Buffer formulation:** 20mM Tris, 150mM NaCl, pH8.0, containing 0.01% skl, 5%Trehalose.

**Original Concentration:** 600µg/mL

**Applications:** Positive Control; Immunogen; SDS-PAGE; WB.

(May be suitable for use in other assays to be determined by the end user.)

**Predicted isoelectric point:** 4.7

**Predicted Molecular Mass:** 57.7kDa

**Accurate Molecular Mass:** 58kDa as determined by SDS-PAGE reducing conditions.

## **[ USAGE ]**

Reconstitute in 20mM Tris, 150mM NaCl (pH8.0) to a concentration of 0.1-1.0 mg/mL. Do not vortex.

## **[ STORAGE AND STABILITY ]**

**Storage:** Avoid repeated freeze/thaw cycles.

Store at 2-8°C for one month.

Aliquot and store at -80°C for 12 months.

**Stability Test:** The thermal stability is described by the loss rate. The loss rate was determined by accelerated thermal degradation test, that is, incubate the protein at 37°C for 48h, and no obvious degradation and precipitation were observed. The loss rate is less than 5% within the expiration date under appropriate storage condition.

## **[ SEQUENCE ]**

HHV LEEVQQVRRS HQDFSRQREE  
 LGQGLQGVEQ KVQSLQATFG TFESILRSSQ HKQDLTEKAV KQGESEVSRI  
 SEVLQKLQNE ILKDLSDGIH VVKDARERDF TSLENTVEER LTELTKSIND  
 NIAIFTEVQK RSQKEINDMK AKVASLEESE GNKQDLKALK EAVKEIQTSA  
 KSREWDMEAL RSTLQTMESD IYTEVRELVS LKQEQQAFKE AADTERLALQ  
 ALTEKLLRSE ESVSRLPEEI RRLEEELRQL KSDSHGPKED GGFRHSEAFE  
 ALQQKSQGLD SRLQHVEDGV LSMQVASARQ TESLESLLSK SQEHEQRLAA  
 LQGRLEGLGS SEADQDGLAS TVRSLGETQL VLYGDVEELK RSVGELPSTV  
 ESLQKVQEQV HTLLSQDQAQ AARLPPQDFL DRLSSLDNLK ASVSQVEADL  
 KMLRTAVDSL VAYSVKIETN ENNLESAGKL LDDLRLNDLDR LFVKVEKIHE  
 KV

## [ IDENTIFICATION ]

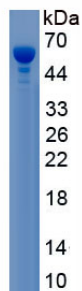


Figure. SDS-PAGE

## [ IMPORTANT NOTE ]

The kit is designed for research use only, we will not be responsible for any issue if the kit was used in clinical diagnostic or any other procedures.