

RPC441Hu01 50µg
Recombinant Dipeptidase 1, Renal (DPEP1)
Organism Species: *Homo sapiens (Human)*
Instruction manual

FOR RESEARCH USE ONLY
NOT FOR USE IN CLINICAL DIAGNOSTIC PROCEDURES

12th Edition (Revised in Aug, 2016)

[PROPERTIES]

Source: Prokaryotic expression

Host: *E.coli*

Residues: Asp17~Leu411

Tags: N-terminal His Tag

Subcellular Location: Membrane

Purity: > 90%

Traits: Freeze-dried powder

Buffer formulation: 20mM Tris, 150mM NaCl, pH8.0, containing 1mM EDTA, 1mM DTT, 0.01% SKL, 5% Trehalose .

Original Concentration: 200µg/mL

Applications: Positive Control; Immunogen; SDS-PAGE; WB.

(May be suitable for use in other assays to be determined by the end user.)

Predicted isoelectric point: 5.8

Predicted Molecular Mass: 47.5KDa

Accurate Molecular Mass: 48kDa as determined by SDS-PAGE reducing conditions.

[USAGE]

Reconstitute in 20mM Tris, 150mM NaCl (pH8.0) to a concentration of 0.1-1.0 mg/mL. Do not vortex.

[STORAGE AND STABILITY]

Storage: Avoid repeated freeze/thaw cycles.

Store at 2-8°C for one month.

Aliquot and store at -80°C for 12 months.

Stability Test: The thermal stability is described by the loss rate. The loss rate was determined by accelerated thermal degradation test, that is, incubate the protein at 37°C for 48h, and no obvious degradation and precipitation were observed. The loss rate is less than 5% within the expiration date under appropriate storage condition.

[SEQUENCE]

```
          DFFR DEAIRIMRDS PVIDGHNDLP WQLLDMFNNR
LQDERANLTT LAGHTNIPK LRAFVGGQF WSVYTPCDTQ NKDAVRRITL
QMDVVHRMCR MYPETFLYVT SSAGIRQAFR EGKVASLIGV EGGHSIDSSL
GVLRALYQLG MRYLTLTHSC NTPWADNWLV DTGDSEPQSQ GLSPFGQRVV
KELNRLGVLI DLAHVSVATM KATLQLSRAP VIFSHSSAYS VCASRRNVPD
DVLRLVKQTD SLVMVNFYNN YISCTNKANL SQVADHLDHI KEVAGARAVG
FGGDFDGVPR VPEGLEDVSK YPDLIAELLR RNWTEAEVKG ALADNLLRVF
EAVEQASNLT QAPEEEPIPL DQLGGSCRTH YGYSSGASSL HRHWGLLLAS
LAPLVLCLSL L
```

[IDENTIFICATION]

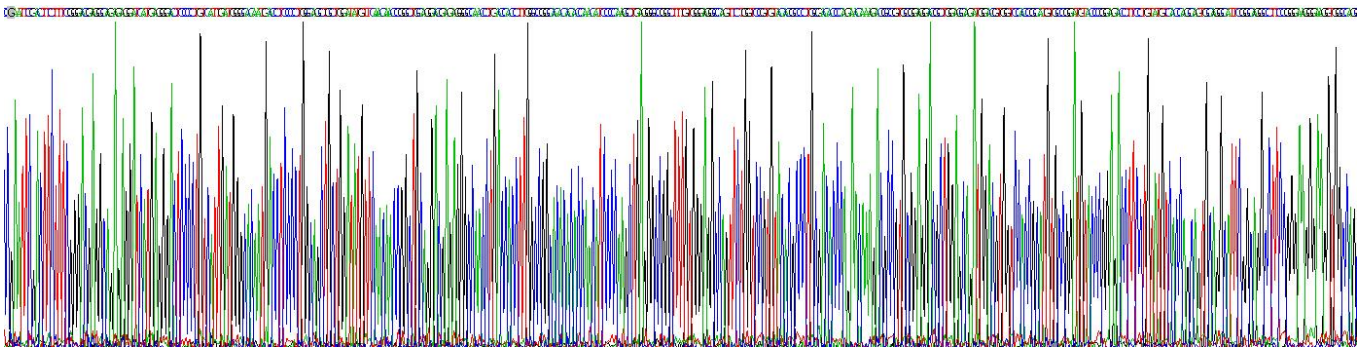


Figure . Gene Sequencing (extract)

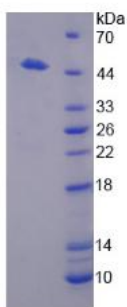


Figure. SDS-PAGE

[IMPORTANT NOTE]

The kit is designed for research use only, we will not be responsible for any issue if the kit was used in clinical diagnostic or any other procedures.