

**RPC452Mu01 10µg**

**Recombinant Ectodysplasin A (EDA)**

**Organism Species: *Mus musculus* (Mouse)**

***Instruction manual***

**FOR RESEARCH USE ONLY**

**NOT FOR USE IN CLINICAL DIAGNOSTIC PROCEDURES**

---

13th Edition (Revised in Aug, 2023)

## **[ PROPERTIES ]**

**Source:** Prokaryotic expression

**Host:** *E.coli*

**Residues:** Pro141~Thr378

**Tags:** N-terminal His and GST Tag

**Subcellular Location:** Membrane

**Purity:** > 90%

**Traits:** Freeze-dried powder

**Buffer formulation:** 20mM Tris, 150mM NaCl, pH8.0, containing 0.01% skl, 5%Trehalose.

**Original Concentration:** 50µg/mL

**Applications:** Positive Control; Immunogen; SDS-PAGE; WB.

(May be suitable for use in other assays to be determined by the end user.)

**Predicted isoelectric point:** 9.4

**Predicted Molecular Mass:** 55.2kDa

**Accurate Molecular Mass:** 40&33&26kDa as determined by SDS-PAGE reducing conditions.

### **Phenomenon explanation:**

The possible reasons that the actual band size differs from the predicted are as follows:

- 1.Splice variants: Alternative splicing may create different sized proteins from the same gene.
2. Relative charge: The composition of amino acids may affects the charge of the protein.
3. Post-translational modification: Phosphorylation, glycosylation, methylation etc.
4. Post-translation cleavage: Many proteins are synthesized as pro-proteins, and then cleaved to give the active form.
5. Polymerization of the target protein: Dimerization, multimerization etc.

## **[ USAGE ]**

Reconstitute in ddH<sub>2</sub>O to a concentration less than or equal to 0.05mg/mL. Do not vortex.

## **[ STORAGE AND STABILITY ]**

**Storage:** Avoid repeated freeze/thaw cycles.

Store at 2-8°C for one month.

Aliquot and store at -80°C for 12 months.

**Stability Test:** The thermal stability is described by the loss rate. The loss rate was determined by accelerated thermal degradation test, that is, incubate the protein at 37°C for 48h, and no obvious degradation and precipitation were observed. The loss rate is less than 5% within the expiration date under appropriate storage condition.

### [ **SEQUENCE** ]

				PDEKAYSEEE
SRRVRRNKRS	KSGEGADGPV	KNKKKGKKAG	PPGPNPPGP	PGPPGPQGPP
GIPGIPGIPG	TTVMGPPGPP	GPPGPQGPPG	LQGPSGAADK	TGTRENQPAV
VHLQGQGSAL	QVKNDLSGGV	LNDWSRITMN	PKVFKLHPRS	GELEVLVDGT
YFIYSQVEVY	YINFTDFASY	EVVVDEKPFL	QCTRSIETGK	TNYNTCYTAG
VCLLKARQKI	AVKMHADIS	INMSKHTT		

### [ **IDENTIFICATION** ]

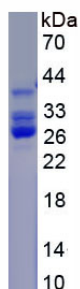


Figure. SDS-PAGE

### [ **IMPORTANT NOTE** ]

The kit is designed for research use only, we will not be responsible for any issue if the kit was used in clinical diagnostic or any other procedures.