

RPC463Ra01 10µg

Recombinant Endothelial Cell Specific Molecule 1 (ESM1)

Organism Species: *Rattus norvegicus* (Rat)

Instruction manual

FOR RESEARCH USE ONLY

NOT FOR USE IN CLINICAL DIAGNOSTIC PROCEDURES

13th Edition (Revised in Aug, 2023)

[PROPERTIES]

Source: Prokaryotic expression

Host: *E.coli*

Residues: Ala22~Arg184

Tags: N-terminal His Tag

Subcellular Location: Secreted

Purity: > 90%

Traits: Freeze-dried powder

Buffer formulation: 20mM Tris, 150mM NaCl, pH8.0, containing 0.01% Sarcosyl, 5%Trehalose.

Original Concentration: 100µg/mL

Applications: Positive Control; Immunogen; SDS-PAGE; WB.

(May be suitable for use in other assays to be determined by the end user.)

Predicted isoelectric point: 5.7

Predicted Molecular Mass: 19.3kDa

Accurate Molecular Mass: 20kDa as determined by SDS-PAGE reducing conditions.

[USAGE]

Reconstitute in ddH₂O to a concentration of 0.1-1.0 mg/mL. Do not vortex.

[STORAGE AND STABILITY]

Storage: Avoid repeated freeze/thaw cycles.

Store at 2-8°C for one month.

Aliquot and store at -80°C for 12 months.

Stability Test: The thermal stability is described by the loss rate. The loss rate was determined by accelerated thermal degradation test, that is, incubate the protein at 37°C for 48h, and no obvious degradation and precipitation were observed. The loss rate is less than 5% within the expiration date under appropriate storage condition.

[SEQUENCE]

AKYAVDCPE HCDNTECRSS LRCKRTVLDD
CGCCQVCAAG PGETCYRTVS GMDGVKCGPG LKCHFYEED DFGDEFGVCK
DCPYGTFGMD CKETCNCQSG ICDRVTGRCL DFPFFQYAAA KSPSRTSASQ
TERDAASGDG NAVREEIGDR NAARPSVMKW LNPR

[IDENTIFICATION]

[T](#)[A](#)[B](#)[C](#)[D](#)[E](#)[F](#)[G](#)[H](#)[I](#)[J](#)[K](#)[L](#)[M](#)[N](#)[O](#)[P](#)[Q](#)[R](#)[S](#)[T](#)[U](#)[V](#)[W](#)[X](#)[Y](#)[Z](#)[0](#)[1](#)[2](#)[3](#)[4](#)[5](#)[6](#)[7](#)[8](#)[9](#)[-](#)[_](#)[~](#)[!](#)[@](#)<#>[\\$](#)[%](#)[^](#)[&](#)[*](#)[\(](#)[\)](#)[+](#)[=](#)[,](#)[.](#)[:](#)[;"](#)['](#)["](#)[`](#)[~](#)[|](#)[\](#)[/](#)[?](#)[\[](#)[\]](#)[{](#)[}](#)[<](#)[>](#)[=](#)

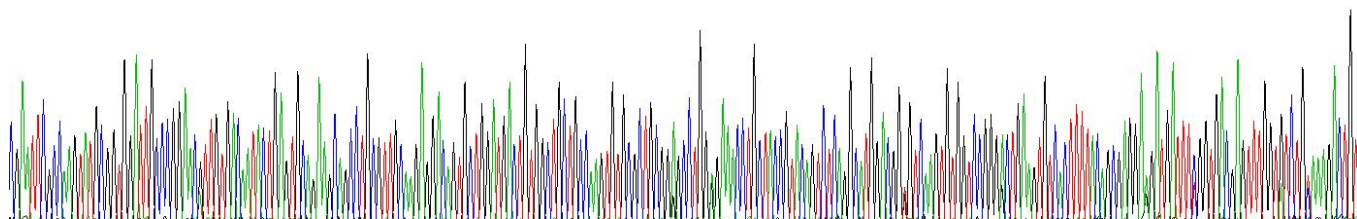
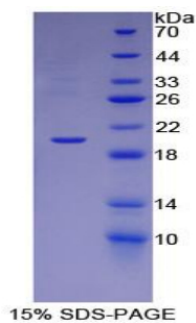


Figure . Gene Sequencing (extract)



[IMPORTANT NOTE]

The kit is designed for research use only, we will not be responsible for any issue if the kit was used in clinical diagnostic or any other procedures.