

RPB981Hu01 100µg

Recombinant Endothelin Receptor A (ETRA)

Organism Species: *Homo sapiens (Human)*

Instruction manual

FOR RESEARCH USE ONLY

NOT FOR USE IN CLINICAL DIAGNOSTIC PROCEDURES

13th Edition (Revised in Aug, 2023)

[**PROPERTIES**]

Source: Prokaryotic expression

Host: *E.coli*

Residues: Asp21~Lys80

Tags: N-terminal His Tag

Subcellular Location: Membrane

Purity: > 90%

Traits: Freeze-dried powder

Buffer formulation: PBS, pH7.4, containing 0.01% Sarcosyl, 5% Trehalose.

Original Concentration: 200µg/mL

Applications: Positive Control; Immunogen; SDS-PAGE; WB.

(May be suitable for use in other assays to be determined by the end user.)

Predicted isoelectric point: 6.8

Predicted Molecular Mass: 10.5kDa

Accurate Molecular Mass: 12kDa as determined by SDS-PAGE reducing conditions.

[**USAGE**]

Reconstitute in 10mM PBS (pH7.4) to a concentration of 0.1-1.0 mg/mL. Do not vortex.

[**STORAGE AND STABILITY**]

Storage: Avoid repeated freeze/thaw cycles.

Store at 2-8°C for one month.

Aliquot and store at -80°C for 12 months.

Stability Test: The thermal stability is described by the loss rate. The loss rate was determined by accelerated thermal degradation test, that is, incubate the protein at 37°C for 48h, and no obvious degradation and precipitation were observed. The loss rate is less than 5% within the expiration date under appropriate storage condition.

[**SEQUENCE**]

DNPERYSTNL SNHVDDFTTF RGTLSFLVT
THQPTNLVLP SNGSMHNYCP QQTKITSAFK

[IDENTIFICATION]

G A T A T C C T G A G A T A C G C A C A A T C T A A G C A A T C A T G T G G A T G T T T C A C C A C T T T T C G G S C A G A G C T C A G C T T C C T G G T T A C C A C T C A T C A A C C C A C T A A T T T G G T C C T A C C A G C A T G G C T C A T G C A C A C T A T T G C C A G C A G A C T A A A T T A C T T C A G C T T T C A
 D N P E R Y S I N L S N H V D D F T T F R G T E L S F L V T T H Q P T N L V L P S N G S M H N Y C P Q Q T K I T S A F K

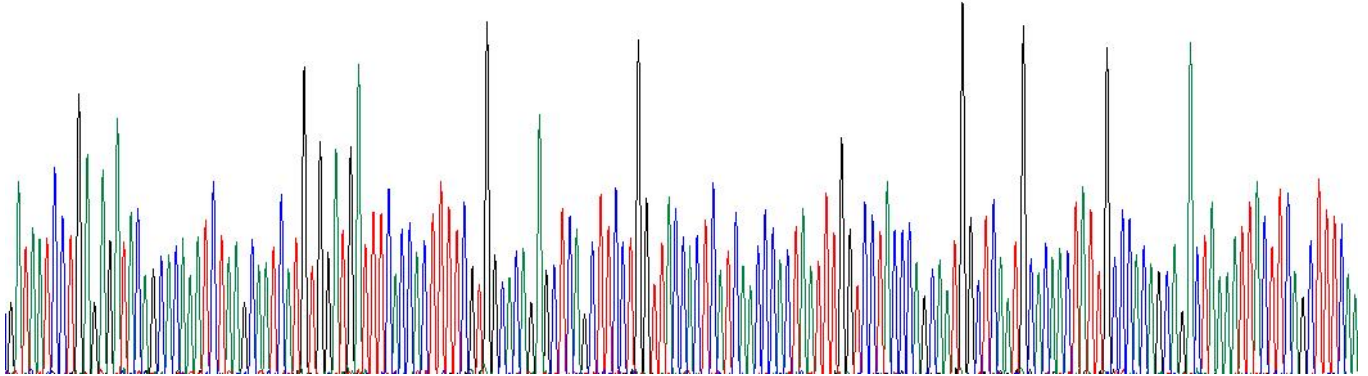


Figure. Gene Sequencing (Extract)

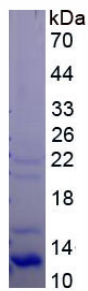


Figure. SDS-PAGE

[IMPORTANT NOTE]

The kit is designed for research use only, we will not be responsible for any issue if the kit was used in clinical diagnostic or any other procedures.