

**RPA537Ra01 100µg**  
**Recombinant Enolase, Neuron Specific (NSE)**  
**Organism Species: *Rattus norvegicus* (Rat)**  
***Instruction manual***

FOR RESEARCH USE ONLY  
NOT FOR USE IN CLINICAL DIAGNOSTIC PROCEDURES

---

13th Edition (Revised in Aug, 2023)

**[ PROPERTIES ]**

**Source:** Prokaryotic expression

**Host:** *E.coli*

**Residues:** Ser2~Leu434

**Tags:** N-terminal His Tag

**Subcellular Location:** Membrane, Cytoplasm

**Purity:** > 95%

**Traits:** Freeze-dried powder

**Buffer formulation:** 20mM Tris, 150mM NaCl, pH8.0, containing 0.01% skl, 5%Trehalose.

**Original Concentration:** 200µg/mL

**Applications:** Positive Control; Immunogen; SDS-PAGE; WB.

(May be suitable for use in other assays to be determined by the end user.)

**Predicted isoelectric point:** 5.3

**Predicted Molecular Mass:** 48.5kDa

**Accurate Molecular Mass:** 48kDa as determined by SDS-PAGE reducing conditions.

**[ USAGE ]**

Reconstitute in 20mM Tris, 150mM NaCl (pH8.0) to a concentration of 0.1-1.0 mg/mL. Do not vortex.

**[ STORAGE AND STABILITY ]**

**Storage:** Avoid repeated freeze/thaw cycles.

Store at 2-8°C for one month.

Aliquot and store at -80°C for 12 months.

**Stability Test:** The thermal stability is described by the loss rate. The loss rate was determined by accelerated thermal degradation test, that is, incubate the protein at 37°C for 48h, and no obvious degradation and precipitation were observed. The loss rate is less than 5% within the expiration date under appropriate storage condition.

**[ SEQUENCE ]**

SIQKIWARE ILDSRGNPTV EVDLHTAKGL FRAAVPSGAS TGIYEALELR  
DGDKQRYL GK GVLKAVDHIN STIAPALISS GLSVVEQEKL DNLMELDGT  
ENKSKFGANA ILGVSLAVCK AGAAEKDLPL YRHIAQLAGN SDLILPVPAF  
NVIINGGSHAG NKLAMQEFMI LPVGAESFRD AMRLGAEVYH TLKGVKDKY  
GKDATNVGDE GGFAPNILEN SEALELVKEA IDKAGYTEKM VIGMDVAASE  
FYRDGKYDLD FKSPADPSRC ITGDQLGALY QDFVRNYPVV SIEDPFDQDD  
WAAWSKFTAN VGIQIVGDDL TVTNPKRIER AVEEKACNCL LLKVNQIGSV  
TEAIQACKLA QENGWGVMVS HRSGETEDTF IADLVVGLCT GQIKTGAPCR  
SERLAKYNQL MRIEEEELGEE ARFAGHNFRN PSVL

**[ IDENTIFICATION ]**

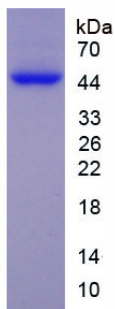


Figure. SDS-PAGE

**[ IMPORTANT NOTE ]**

The kit is designed for research use only, we will not be responsible for any issue if the kit was used in clinical diagnostic or any other procedures.