

**RPA757Hu01 50µg**

**Recombinant Epidermal Growth Factor Receptor (EGFR)**

**Organism Species: *Homo sapiens (Human)***

***Instruction manual***

**FOR RESEARCH USE ONLY**

**NOT FOR USE IN CLINICAL DIAGNOSTIC PROCEDURES**

---

13th Edition (Revised in Aug, 2023)

## **[ PROPERTIES ]**

**Source:** Prokaryotic expression

**Host:** *E.coli*

**Residues:** Lys713~Asp984

**Tags:** N-terminal His Tag

**Subcellular Location:** Membrane, Secreted

**Purity:** > 80%

**Traits:** Freeze-dried powder

**Buffer formulation:** PBS, pH7.4, containing 0.01% SKL, 5% Trehalose.

**Original Concentration:** 250µg/mL

**Applications:** Positive Control; Immunogen; SDS-PAGE; WB.

(May be suitable for use in other assays to be determined by the end user.)

**Predicted isoelectric point:** 6.7

**Predicted Molecular Mass:** 37.6kDa

**Accurate Molecular Mass:** 37kDa as determined by SDS-PAGE reducing conditions.

## **[ USAGE ]**

Reconstitute in 10mM PBS (pH7.4) to a concentration of 0.1-1.0 mg/mL. Do not vortex.

## **[ STORAGE AND STABILITY ]**

**Storage:** Avoid repeated freeze/thaw cycles.

Store at 2-8°C for one month.

Aliquot and store at -80°C for 12 months.

**Stability Test:** The thermal stability is described by the loss rate. The loss rate was determined by accelerated thermal degradation test, that is, incubate the protein at 37°C for 48h, and no obvious degradation and precipitation were observed. The loss rate is less than 5% within the expiration date under appropriate storage condition.

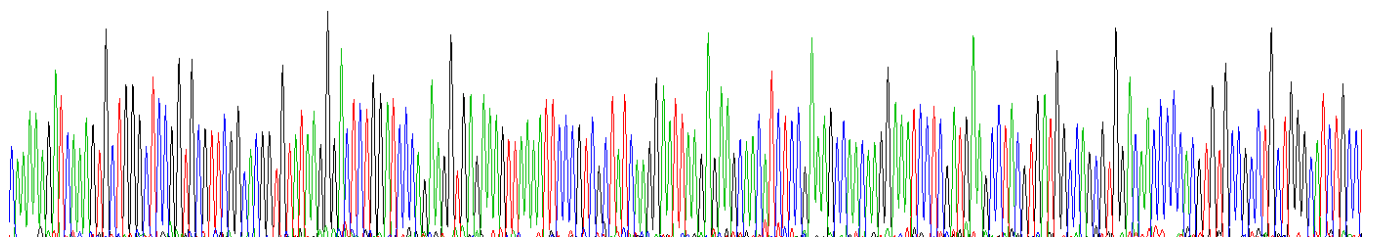
## **[ SEQUENCE ]**

```

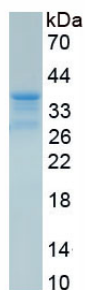
      K K I K V L G S   G A F G T V Y K G L   W I P E G E K V K I   P V A I K E L R E A
T S P K A N K E I L   D E A Y V M A S V D   N P H V C R L L G I   C L T S T V Q L I T   Q L M P F G C L L D
Y V R E H K D N I G   S Q Y L L N W C V Q   I A K G M N Y L E D   R R L V H R D L A A   R N V L V K T P Q H
V K I T D F G L A K   L L G A E E K E Y H   A E G G K V P I K W   M A L E S I L H R I   Y T H Q S D V W S Y
G V T V W E L M T F   G S K P Y D G I P A   S E I S S I L E K G   E R L P Q P P I C T   I D V Y M I M V K C
W M I D A D S R P K   F R E L I I E F S K   M A R D P Q R Y L V   I Q G D
  
```

## [ IDENTIFICATION ]

C A A A A G T C A A A G T C T G G G C T T G G G C T T G G G C A G G T G T A A G G G A C T C T G G A T C C C A G A G G T G A G A G T T A A A A T T C C C G T G C T A T C A A G A A T T A A G A G A G C A C A T C T C C G A A A G C A C A G G A A T C T G A T G A A G C C T G G T G A T G G C A G G T G S A C A A C C C A G T G T G C G C T G C T G G G C A T C T G C C  
 K K I K V L G S G A F G T V Y K G L W I P E G E K V K I P V A I K E L R E A T S P K A N K E I L D E A Y V M A S V D N P H V C R L L G I C L



**Figure. Gene Sequencing (Extract)**



**Figure. SDS-PAGE**

## [ IMPORTANT NOTE ]

The kit is designed for research use only, we will not be responsible for any issue if the kit was used in clinical diagnostic or any other procedures.