

**RPA437Mu01 10µg**  
**Recombinant Estrogen Receptor Beta (ERb)**  
**Organism Species: *Mus musculus* (Mouse)**  
***Instruction manual***

FOR RESEARCH USE ONLY  
NOT FOR USE IN CLINICAL DIAGNOSTIC PROCEDURES

---

12th Edition (Revised in Aug, 2016)

**[ PROPERTIES ]**

**Source:** Prokaryotic expression

**Host:** *E.coli*

**Residues:** Met46~Gln530

**Tags:** N-terminal His Tag

**Subcellular Location:** Nucleus

**Purity:** > 97%

**Traits:** Freeze-dried powder

**Buffer formulation:** PBS, pH7.4, containing 0.05% SKL, 1mM DTT, 5% Trehalose .

**Original Concentration:** 200µg/mL

**Applications:** Positive Control; Immunogen; SDS-PAGE; WB.

(May be suitable for use in other assays to be determined by the end user.)

**Predicted isoelectric point:** 8.9

**Predicted Molecular Mass:** 55.6kDa

**Accurate Molecular Mass:** 55kDa as determined by SDS-PAGE reducing conditions.

**[ USAGE ]**

Reconstitute in 10mM PBS (pH7.4) to a concentration of 0.1-1.0 mg/mL. Do not vortex.

**[ STORAGE AND STABILITY ]**

**Storage:** Avoid repeated freeze/thaw cycles.

Store at 2-8°C for one month.

Aliquot and store at -80°C for 12 months.

**Stability Test:** The thermal stability is described by the loss rate. The loss rate was determined by accelerated thermal degradation test, that is, incubate the protein at 37°C for 48h, and no obvious degradation and precipitation were observed. The loss rate is less than 5% within the expiration date under appropriate storage condition.

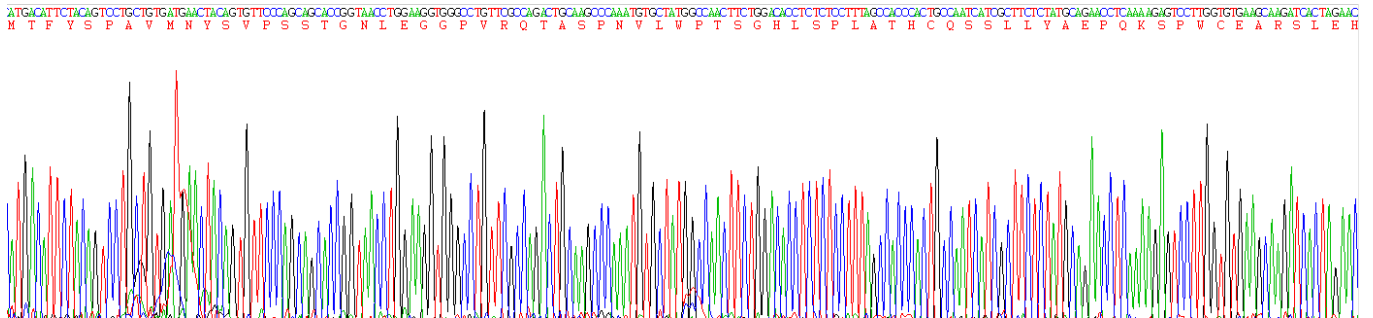
**[ SEQUENCE ]**

MTFY5

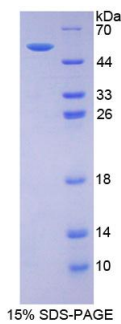
```

PAVMNYSVPS STGNLEGGPV RQTASPNVLW PTSGHLSPLA THCQSSLLYA
EPQKSPWCEA RSLEHTLPVN RETLKRKLG GSGASPVTSP SAKRDAHFCA
VCS DYASGYH YGVWSCEGCK AFFKRSIQGH NDYICPATNQ CTIDKNRRKS
CQACRLRKY EVGMVKCGSR RERCGYRIVR RQRSASEQVH CLNKAKRTSG
HTPRVKELL NSLSPEQLVL TLLEAEPPNV LVS RPSMPFT EASMMMSLTK
LADKELVHMI GWAKKIPGFV ELSLLDQVRL LESCWMEVLM VGLMWRSIDH
PGKLIFAPDL VLDRDEGKCV EGILEIFDML LATTARFREL KLQHKEYLCV
KAMILLNSSM YPLATASQEA ESSRKLTHLL NAVTDALVWV ISKSGISSQQ
QSVRLANLLM LLSHVRHISN KGMEHLLSMK CKNVVPVYDL LLEMLNAHTL
RGYKSSISGS ECCSTEDSKS KEGSQNLQSQ
    
```

**[ IDENTIFICATION ]**



**Figure. Gene Sequencing (Extract)**



**[ IMPORTANT NOTE ]**

The kit is designed for research use only, we will not be responsible for any issue if the kit was used in clinical diagnostic or any other procedures.