

**RPA559Mu01 200ug**

**Recombinant Fatty Acid Binding Protein 2, Intestinal (FABP2)**

**Organism Species: *Mus musculus* (Mouse)**

***Instruction manual***

FOR RESEARCH USE ONLY

NOT FOR USE IN CLINICAL DIAGNOSTIC PROCEDURES

---

12th Edition (Revised in Aug, 2016)

**[ PROPERTIES ]**

**Source:** Prokaryotic expression

**Host:** *E.coli*

**Residues:** Ala2~Glu132

**Tags:** N-terminal His Tag

**Subcellular Location:** Cytoplasm

**Purity:** > 95%

**Traits:** Freeze-dried powder

**Buffer formulation:** PBS, pH7.4, containing 0.01% SKL, 5% Trehalose.

**Original Concentration:** 120µg/mL

**Applications:** Positive Control; Immunogen; SDS-PAGE; WB.

(May be suitable for use in other assays to be determined by the end user.)

**Predicted isoelectric point:** 8.9

**Predicted Molecular Mass:** 18.2kDa

**Accurate Molecular Mass:** 18kDa as determined by SDS-PAGE reducing conditions.

**[ USAGE ]**

Reconstitute in 10mM PBS (pH7.4) to a concentration of 0.1-1.0 mg/mL. Do not vortex.

**[ STORAGE AND STABILITY ]**

**Storage:** Avoid repeated freeze/thaw cycles.

Store at 2-8°C for one month.

Aliquot and store at -80°C for 12 months.

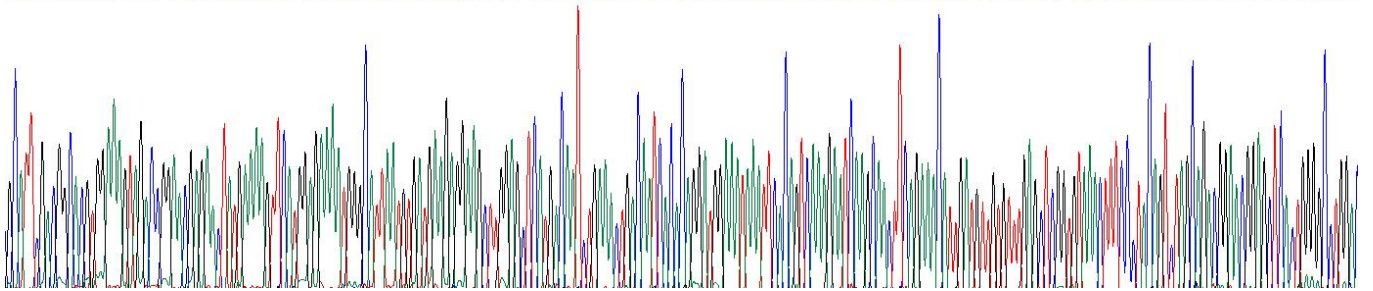
**Stability Test:** The thermal stability is described by the loss rate. The loss rate was determined by accelerated thermal degradation test, that is, incubate the protein at 37°C for 48h, and no obvious degradation and precipitation were observed. The loss rate is less than 5% within the expiration date under appropriate storage condition.

**[ SEQUENCE ]**

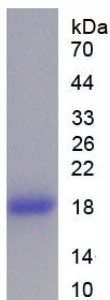
AFDGTWKVD RNEYEKFME KMGINVMKRK LGAHDNLKLT ITQDGNKFTV  
 KESSNFRNID VV FELGVNFP YSLADGTELT GAWTIEGNKL IGKFTRVDNG  
 KELIAVREVS GNELIQTYTY EGVEAKRFFK KE

**[ IDENTIFICATION ]**

TCATTGCGGGGCTGGAAAGTAGCCGACGGGACTATGAAATTCCTGGGAAATGGGCTTAAATGATGAGAGGGAGCTTGGGCTCATGCAATCTGAACTGACATCAGCAGGATGGAAATATCAGCTCAGAGATCAGGCTTCTGAACTTGGATTTGGCTTGGCTCGGTAACTTCCCTAGCTCTGAGAGCGGAGCGGCTCATGGGGCTGGK  
 A F D G T W K V D R N E Y E K F M E K M G I N V M K R K L G A H D N L K L T I T Q D G N K F T V K E S S N F R N I D V V F E L G V N F P Y S L A D G T E L T G A W T I E G N K L I G K F T R V D N G K E L I A V R E V S G N E L I Q T Y T Y E G V E A K R F F K K E



**Figure. Gene Sequencing (Extract)**



**Figure. SDS-PAGE**

**[ IMPORTANT NOTE ]**

The kit is designed for research use only, we will not be responsible for any issue if the kit was used in clinical diagnostic or any other procedures.