

**RPB215Mu01 200µg**

**Recombinant Fibrinogen Beta Chain (FGB)**

**Organism Species: *Mus musculus* (Mouse)**

***Instruction manual***

**FOR RESEARCH USE ONLY**

**NOT FOR USE IN CLINICAL DIAGNOSTIC PROCEDURES**

---

13th Edition (Revised in Aug, 2023)

## **[ PROPERTIES ]**

**Source:** Prokaryotic expression

**Host:** *E.coli*

**Residues:** Gly35~Gln481

**Tags:** N-terminal His Tag

**Subcellular Location:** Secreted

**Purity:** > 95%

**Traits:** Freeze-dried powder

**Buffer formulation:** PBS, pH7.4, containing 0.01% SKL, 5% Trehalose .

**Original Concentration:** 500µg/mL

**Applications:** Positive Control; Immunogen; SDS-PAGE; WB.

(May be suitable for use in other assays to be determined by the end user.)

**Predicted isoelectric point:** 8.2

**Predicted Molecular Mass:** 52.3kDa

**Accurate Molecular Mass:** 54kDa as determined by SDS-PAGE reducing conditions.

## **[ USAGE ]**

Reconstitute in 10mM PBS (pH7.4) to a concentration of 0.1-1.0 mg/mL. Do not vortex.

## **[ STORAGE AND STABILITY ]**

**Storage:** Avoid repeated freeze/thaw cycles.

Store at 2-8°C for one month.

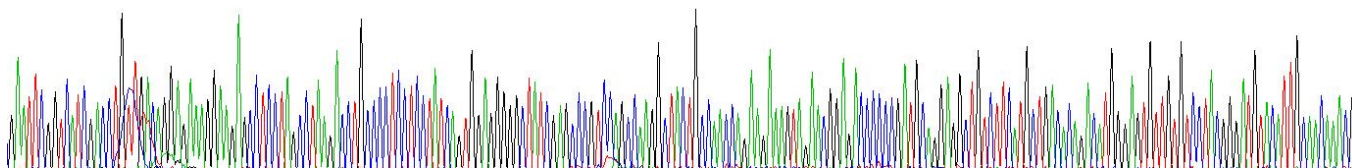
Aliquot and store at -80°C for 12 months.

**Stability Test:** The thermal stability is described by the loss rate. The loss rate was determined by accelerated thermal degradation test, that is, incubate the protein at 37°C for 48h, and no obvious degradation and precipitation were observed. The loss rate is less than 5% within the expiration date under appropriate storage condition.

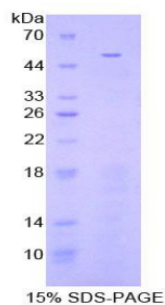
## **[ SEQUENCE ]**

			GHRPVD	RRKEEPPSLR
PAPPPISGGG	YRARPAKATA	NQKKVERRPP	DAGGCLHADT	DMGVLCP TGC
TLQQTLLNQE	RPIKSSIAEL	NNNIQSVSDT	SSVTFQYLTL	LKDMWKKKQA
QVKENENVIN	EYSSILEDQR	LYIDETVNDN	IPLNLRVLRS	ILEDLRSKIQ
KLESDISAQM	EYCRTPCTVS	CNIPVVS GKE	CEEIIRKGG E	TSEMYLIQPD
TSIKPYRVYC	DMKTENGGWT	VIQNRQDGSV	DFGRKWDPYK	KGFGNIATNE
DAKKYCGLPG	EYWLGN DKIS	QLTRMGPT EL	LIEMEDWKGD	KVKAHYGGFT
VQNEASKYQV	SVNKYKGTAG	NALMDGASQL	VGENRTMTIH	NGMFFSTYDR
DNDGWVTTDP	RKQCSKEDGG	GWWYNRCHAA	NPNGRYYWGG	LYSWDMSKHG
TDDGVVWMNW	KGSWYSMRRM	SMKIRPFFPQ	Q	

**[ IDENTIFICATION ]**



### Figure . Gene Sequencing (extract)



**[ IMPORTANT NOTE ]**

The kit is designed for research use only, we will not be responsible for any issue if the kit was used in clinical diagnostic or any other procedures.