

RPB494Hu01 10µg

Recombinant Fibromodulin (FMOD)

Organism Species: *Homo sapiens (Human)*

Instruction manual

FOR RESEARCH USE ONLY

NOT FOR USE IN CLINICAL DIAGNOSTIC PROCEDURES

13th Edition (Revised in Aug, 2023)

[**PROPERTIES**]

Source: Prokaryotic expression

Host: *E.coli*

Residues: Gln19~Ile376

Tags: N-terminal His Tag

Subcellular Location: Secreted, Extracellular matrix

Purity: > 95%

Traits: Freeze-dried powder

Buffer formulation: 100mMNaHCO₃, 500mMNaCl, pH8.3, containing 1mM EDTA, 1mM DTT, 0.01% Sarcosyl, 5% Trehalose and Proclin300.

Original Concentration: 200µg/mL

Applications: Positive Control; Immunogen; SDS-PAGE; WB.

(May be suitable for use in other assays to be determined by the end user.)

Predicted isoelectric point: 6.1

Predicted Molecular Mass: 44.9kDa

Accurate Molecular Mass: 45kDa as determined by SDS-PAGE reducing conditions.

[**USAGE**]

Reconstitute in ddH₂O to a concentration of 0.1-1.0 mg/mL. Do not vortex.

[**STORAGE AND STABILITY**]

Storage: Avoid repeated freeze/thaw cycles.

Store at 2-8°C for one month.

Aliquot and store at -80°C for 12 months.

Stability Test: The thermal stability is described by the loss rate. The loss rate was determined by accelerated thermal degradation test, that is, incubate the protein at 37°C for 48h, and no obvious degradation and precipitation were observed. The loss rate is less than 5% within the expiration date under appropriate storage condition.

[**SEQUENCE**]

	QY	EDDPHWWFHY	LRSQQSTYYD	PYDPYPYETY
EPYPYGVDEG	PAYTYGSPSP	PDPRDCPQEC	DCPPNFPTAM	YCDNRNLKYL
PFVPSRMKYV	YFQNNQITSI	QEGVFDNATG	LLWIALHGNQ	ITSDKVGRKV
FSKLRHLERL	YLDHNNLTRM	PGPLPRSLRE	LHLDHNQISR	VPNNALEGLE
NLTALYLQHN	EIQEVGSSMR	GLRSLILLDL	SYNHLRKVPD	GLPSALEQLY
MEHNNVYTVP	DSYFRGAPKL	LYVRLSHNSL	TNNGLASNTF	NSSSLELDL
SYNLQKIPP	VNTNLENLYL	QGNRINEFSI	SSFCTVVDVV	NFSKLQVLRL
DGNEIKRSAM	PADAPLCLRL	ASLIEI		

[IDENTIFICATION]

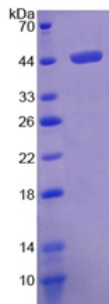


Figure. SDS-PAGE

[IMPORTANT NOTE]

The kit is designed for research use only, we will not be responsible for any issue if the kit was used in clinical diagnostic or any other procedures.